

## Review Article

# Non-invasive prenatal diagnosis (NIPD): how analysis of cell-free DNA in maternal plasma has changed prenatal diagnosis for monogenic disorders

Britt Hanson<sup>1</sup>, Elizabeth Scotchman<sup>1</sup>, Lyn S. Chitty<sup>1,2</sup> and Natalie J. Chandler<sup>1</sup>

<sup>1</sup>North Thames Genomic Laboratory Hub, Great Ormond Street NHS Foundation Trust, London, U.K.; <sup>2</sup>Genetic and Genomic Medicine, UCL Great Ormond Street Institute of Child Health, London, U.K.

Correspondence: Lyn Chitty (l.chitty@ucl.ac.uk)



Cell-free fetal DNA (cffDNA) is released into the maternal circulation from trophoblastic cells during pregnancy, is detectable from 4 weeks and is representative of the entire fetal genome. The presence of this cffDNA in the maternal bloodstream has enabled clinical implementation of non-invasive prenatal diagnosis (NIPD) for monogenic disorders. Detection of paternally inherited and *de novo* mutations is relatively straightforward, and several methods have been developed for clinical use, including quantitative polymerase chain reaction (qPCR), and PCR followed by restriction enzyme digest (PCR-RED) or next-generation sequencing (NGS). A greater challenge has been in the detection of maternally inherited variants owing to the high background of maternal cell-free DNA (cfDNA). Molecular counting techniques have been developed to measure subtle changes in allele frequency. For instance, relative haplotype dosage analysis (RHDO), which uses single nucleotide polymorphisms (SNPs) for phasing of high- and low-risk alleles, is clinically available for several monogenic disorders. A major drawback is that RHDO requires samples from both parents and an affected or unaffected proband, therefore alternative methods, such as proband-free RHDO and relative mutation dosage (RMD), are being investigated. cffDNA was thought to exist only as short fragments (<500 bp); however, long-read sequencing technologies have recently revealed a range of sizes up to ~23 kb. cffDNA also carries a specific placental epigenetic mark, and so fragmentomics and epigenetics are of interest for targeted enrichment of cffDNA. Cell-based NIPD approaches are also currently under investigation as a means to obtain a pure source of intact fetal genomic DNA.

## Introduction

Rare diseases are a heterogeneous group of disorders each typically affecting less than one in 2000 people within the general population [1]. More than 6000 unique rare diseases have been entered in the Orphanet database to date, the majority of which arise from inherited or *de novo* single-gene anomalies that result in chronic and sometimes life-threatening implications for patients [1]. The three main classes of rare monogenic disorders are those which have autosomal recessive (AR), autosomal dominant (AD), and X-linked modes of inheritance, with an estimated prevalence of 35.02%, 23.78% and 5.63%, respectively, and thus accounting for more than 60% of all rare genetic diseases [1]. While many of these disorders are not currently curable or preventable, several therapies and interventions have been developed which, if implemented *in utero* or at an early postnatal timepoint, could improve the quality of life of affected individuals. As such, prenatal testing has played a pivotal role in shaping pregnancy management as well as the clinical outcome of patients with rare monogenic disorders, either by allowing early initiation of therapy or by allowing parents choices with regard to pregnancy management. Historically, access to the

Received: 01 September 2022  
 Revised: 04 November 2022  
 Accepted: 07 November 2022

Version of Record published:  
 16 November 2022

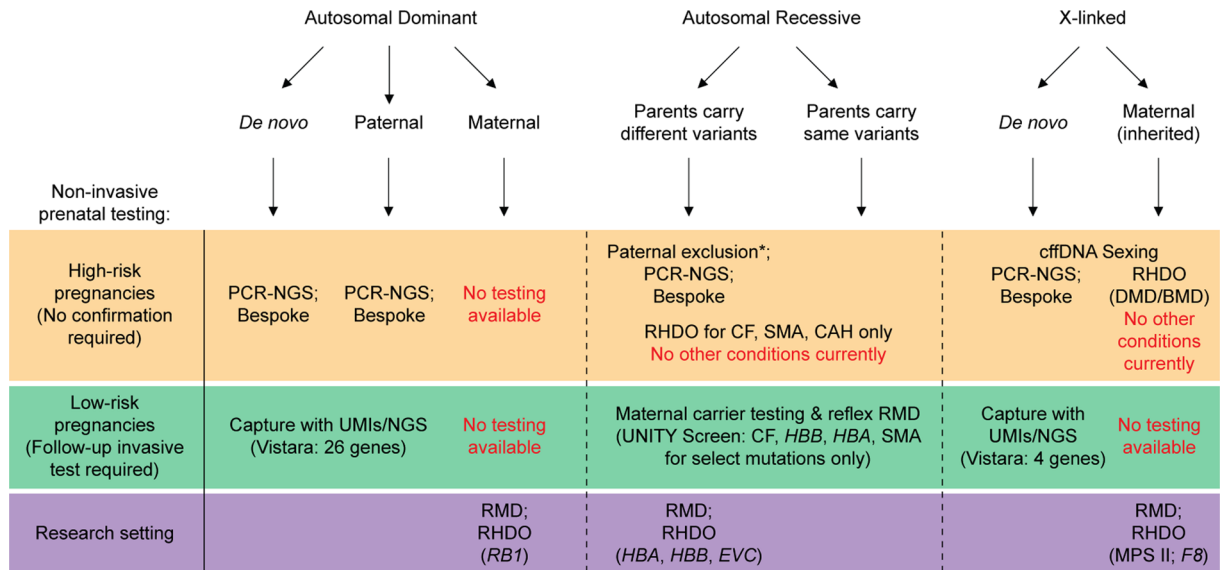


Timeline	Milestone for NIPD	Technology	Setting
1997	Discovery of cffDNA in maternal plasma	PCR	Research
2000	NIPD for SGDs (skeletal dysplasias)	PCR	Research
2002	Prenatal exclusion: AR conditions (CF, $\beta$ -thalassaemia, CAH)	PCR	Research
2008	NIPD for SGDs, parents same mutation, male fetuses	dPCR and RMD	Research
2010	Whole fetal genome mapping: parental haplotype analysis	NGS	Research
2011	NIPD for fetal sex determination approved	PCR	Public Health
	Routine 3rd trimester <i>RHD</i> genotyping: direct anti-RhD immunoglobulin administration	PCR	Public Health
2012	NIPD for SGDs, parents same mutation, male and female fetuses	NGS	Research
	NIPD for selected SGDs approved	PCR-RED	Public Health
2013	NIPD using gene panels approved	NGS	Public Health
	Molecular karyotyping of subchromosomal abnormalities	NGS	Research
2015	Molecular counting for NIPD of SGDs, cfDNA sample only	ddPCR and RMD	Research
2016	NIPD for recessive conditions approved	NGS and RHDO	Public Health
2017	Proband-free NIPD for recessive conditions	NGS and RHDO	Public Health
	Cell-based NIPD for SGDs	NGS	Research
2018	cfDNA screening for monogenic disorders	NGS	Commercial
	NIPD for paternal and <i>de novo</i> pathogenic variant detection, and fetal sexing	ddPCR	Public Health
2019	NIPD for low-risk pregnancies	NGS	Commercial
2021	Discovery of long cfDNA fragments by long-read sequencing	PacBio SMRT	Research

**Figure 1. Timeline of NIPD milestones**

Timeline showing the major milestones reached for NIPD in the research, clinical, and commercial settings since the discovery of cffDNA in maternal plasma. Abbreviations: AR, autosomal recessive; cfDNA, cell-free DNA; ddPCR, droplet digital PCR; dPCR, digital PCR; NGS, next-generation sequencing; PacBio SMRT, Pacific Biosciences single molecule real-time sequencing; PCR, polymerase chain reaction; PCR-RED, PCR followed by restriction enzyme digest; *RHD*, rhesus D blood group status; RMD, relative mutation dosage; RHDO, relative haplotype dosage analysis; SGD, single-gene disorder.

developed towards future clinical implementation, and includes a brief overview of the tests which are commercially available for NIPT in low-risk pregnancies.



**Figure 2. Non-invasive prenatal tests available and in development for diagnosis of monogenic disease**

Diagram depicting the different tests that are currently available either in the public health or commercial settings for high- and low-risk pregnancies, as well as those which are in development in the research setting. Invasive follow-up testing is required for low-risk pregnancy screening using the commercially available tests (i.e. Vistara and UNITY Screen), or for paternal exclusion in instances where the paternal pathogenic variant is detected in high-risk pregnancies (\*). Abbreviations: CAH, congenital adrenal hyperplasia; CF, cystic fibrosis; cffDNA, cell-free fetal DNA; DMD/BMD, Duchenne/Becker muscular dystrophy; EVC, gene mutations causing Ellis van Creveland syndrome; F8, gene mutations causing factor 8 disorder/haemophilia A; HBA and HBB, gene mutations causing  $\alpha$ - and  $\beta$ -thalassaemia respectively; MPS II, Mucopolysaccharidosis type II/Hunter syndrome; PCR-NGS, polymerase chain reaction followed by next-generation sequencing; RB1, gene mutations causing retinoblastoma; RHDO, relative haplotype dosage analysis; RMD, relative mutation dosage; SMA, spinal muscular atrophy; UMI, unique molecular identifier.

## NIPD technologies

### Paternally inherited and *de novo* variants

#### qPCR and PCR-RED

A relatively straightforward approach to NIPD is for the detection of paternally inherited or *de novo* variants which are, by definition, not present in the maternal fraction of cffDNA [6]. Several PCR-based methods have been used, including real-time quantitative PCR (RT-qPCR) for fetal sex determination. Digital PCR (dPCR) has also recently been implemented clinically for the purpose of identifying male fetuses in families at risk for X-linked disorders where conventional qPCR approaches are not applicable [44], and for paternal mutation exclusion testing whereby the absence of the paternal variant indicates that the fetus is not affected [45] (Figure 1). Determination of fetal sex using non-invasive methods reduces unnecessary further testing or treatment, such as in the instance of a female pregnancy in families at risk of X-linked disorders (e.g. BMD/DMD [30]) (Figure 2), and in cases of congenital adrenal hyperplasia (CAH) where treatment with dexamethasone can be restricted to female fetuses [46,47]. Some of the first tests for NIPD of monogenic disease to be delivered clinically were based on PCR followed by restriction enzyme digestion (PCR-RED), specifically for the diagnosis of two *FGFR3* disorders (achondroplasia and thanatophoric dysplasia) [34,35]. There are several limitations to the PCR-RED approach, however, including that it is gene- and variant-specific, requires gel-based analysis which can be subjective, is not applicable to all mutations or for cases where the causative gene is unknown, and it has an inconclusive rate of 8% [35].

#### PCR and NGS

Targeted sequencing of specific genomic loci through PCR followed by next-generation sequencing (PCR-NGS) has emerged as a more sensitive and accurate NIPD approach to conventional PCR-based methods, with a broader mutation detection range for single gene disorders (Figures 1 and 2). This approach can be used to screen for all variants within a gene, for example, autosomal dominant *FGFR2*- and *FGFR3*-related conditions [37]. Recently, PCR-NGS has been used for the prediction of fetal ABO blood group [48]. For autosomal recessive disorders, such as CF [38] and

$\beta$ -thalassaemia [49], PCR-NGS is employed for paternal mutation exclusion (Figures 1 and 2) whereafter detection of the paternal allele requires invasive follow-up testing to determine inheritance of the maternal variant. Additionally, accredited clinical services using PCR-NGS are available for bespoke testing of paternally inherited mutations in families with a known risk for a particular monogenic disease, or where a *de novo* mutation has been detected in a previous pregnancy [27,37,38] (Figures 1 and 2). This approach, however, has not yet been widely clinically implemented owing to its costly and labour-intensive nature.

## Autosomal recessive and inherited X-linked disorders

While detection of *de novo* or paternally inherited variants in cfDNA is relatively straightforward, accurately assigning maternally inherited variants poses a significant challenge owing to the high background of maternal plasma DNA. PCR-NGS is not fully quantitative owing to relatively low read depths, and thus is unable to assign maternally-inherited variants to the FF. This instead requires the use of highly sensitive techniques that can accurately detect small imbalances between wild-type (WT) and pathogenic variants, such as relative haplotype dosage analysis (RHDO) and relative mutation dosage (RMD) (Figures 1 and 2). Newer molecular counting techniques are also being developed to facilitate NGS-based maternal variant detection in cfDNA, discussed in more detail below.

### RHDO

RHDO involves linkage-based methods for variant calling whereby combined counts from thousands of heterozygous SNPs (otherwise referred to as informative SNPs) within the same haplotype surrounding the variant-of-interest are taken into consideration [8] (Figure 3). For autosomal recessive conditions, haplotype phasing of the risk-associated and WT alleles is carried out using NGS on genomic DNA obtained from the mother, father, and an affected or unaffected sibling (i.e. the proband) (Figure 3A,B). For X-linked conditions, the paternal sample is not required for phasing of the high- and low-risk alleles (Figure 3A,B). Sequencing analysis of the maternal plasma DNA is then performed, and SNPs are computationally assigned to a particular type according to their identity relative to the parental genotypes [8] (Figure 3C). Bayesian statistical modelling, using tests such as the sequential probability ratio test (SPRT), determines the relative increase or decrease in informative SNPs across the target haplotype, and thereby predicts fetal inheritance of the disease-associated, or WT, alleles [8] (Figure 3C). RHDO is currently clinically available for NIPD of the autosomal recessive disorders CF [39], SMA [41], and CAH [50], as well as X-linked *DMD*-related muscular dystrophies [40] (Figures 1 and 2). RHDO is still in the developmental setting for  $\alpha$ - and  $\beta$ -thalassaemia (*HBA* and *HBB*) [51], retinoblastoma (*RB1*) [52], Ellis-van Creveld syndrome (*EVC*), factor 8 (*F8*) disorder/haemophilia A, and mucopolysaccharidosis type II (MPS II)/Hunter syndrome [53] (Figure 2).

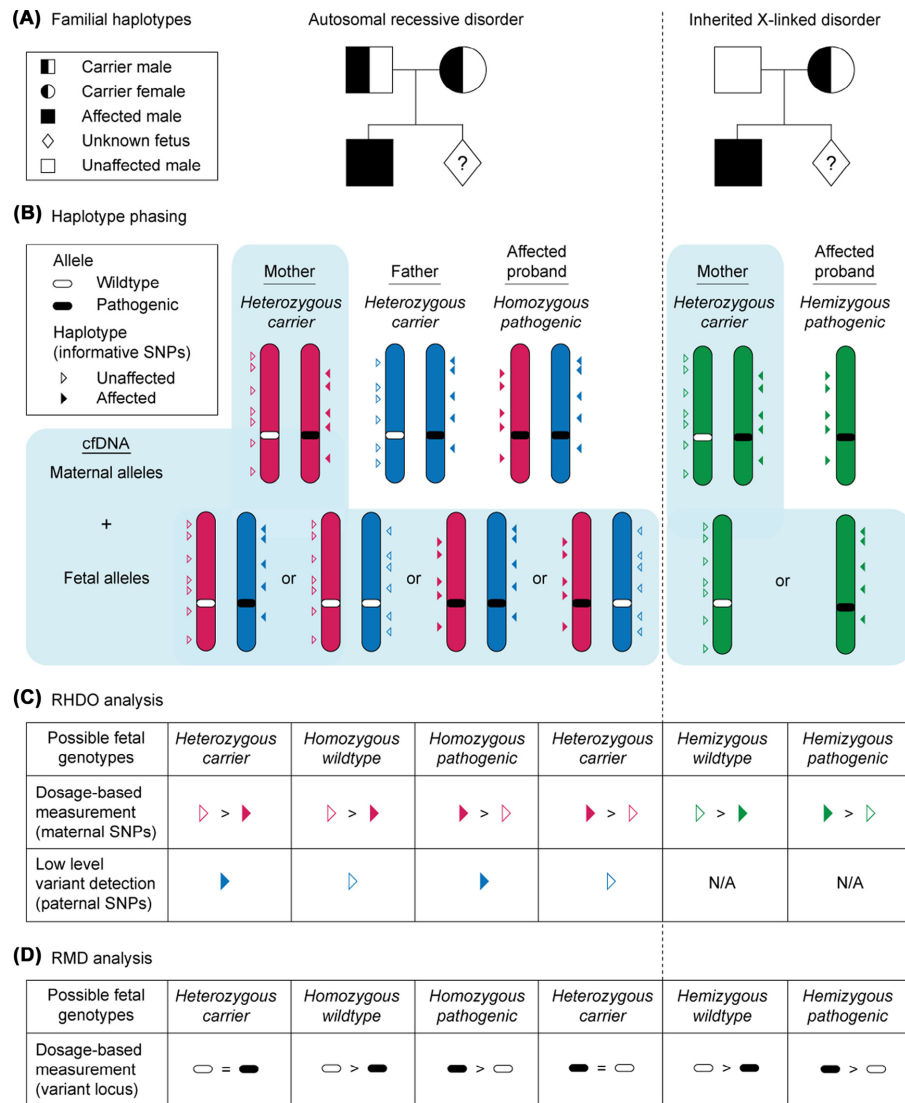
A major advantage of RHDO is that it is not limited by the variant type. However, several challenges exist that have limited widespread implementation of this technology into the clinic. These include difficulties performing RHDO on consanguineous couples owing to the shared haplotype, and the requirement for a sample from both parents as well as an affected or unaffected proband or family member in order to perform the phasing analysis. Improvements to this approach are under investigation, including proband-free RHDO using long-read sequencing (Figure 1). Alternatively, RMD is a method which is highly sensitive and theoretically capable of diagnosing autosomal recessive and X-linked disorders requiring only a maternal blood sample [54] (Figures 1 and 2). Proband-free RHDO and RMD are discussed in more detail below.

## In the developmental pipeline

### Proband-free RHDO

Conventional RHDO relies on inferring the high-risk haplotype based on the SNP profile of an affected or unaffected proband; however, several direct haplotyping methods have recently been developed to facilitate parental haplotype phasing in circumstances where access to additional samples is unavailable. Two main approaches have been investigated for proband-free RHDO, including targeted locus amplification (TLA) [55,56] and microfluidics based linked-read sequencing (although the associated 10X Genomics technology is no longer available) [53,57–59]. As recommended by the American College of Obstetricians and Gynecologists (ACOG) [60], pre-pregnancy or prenatal carrier screening should be undertaken at a global population level for relatively common autosomal recessive disorders, such as SMA, CF and haemoglobinopathies. For these conditions, it is likely therefore that high-risk pregnancies will be identified in couples with no previous children, and therefore the development of universal direct-haplotyping tests could open up the possibility of RHDO for these first-time parents.

Recent advances in single molecule long-read sequencing platforms, such as those developed by Oxford Nanopore Technologies (ONT, Oxford, U.K.) [61] and Pacific Biosciences (PacBio, Menlo Park, CA, U.S.A.) [62], also have



**Figure 3. Schematic overview of RHDO and RMD for NIPD of AR and inherited X-linked conditions**

**(A)** Representative family trees depicting possible familial haplotypes for AR and inherited X-linked conditions. Left hand panel: family tree shows parents that are heterozygous carriers for an AR condition, with an affected child (i.e. the proband) of which the sex is not relevant, and an unborn fetus of unknown genotype. Right hand panel: an unaffected father and a mother who is a carrier for an X-linked disorder, with an affected male child (i.e. the proband) and an unborn fetus of unknown genotype. To note, in the case of an inherited X-linked disorder, cffDNA Sexing will be performed and RHDO analysis only carried out in the instance of a male pregnancy. **(B)** Informative single nucleotide polymorphisms (SNPs) spanning the region containing the variant of interest are ascertained by NGS and used to perform haplotype phasing of the low-risk (WT-associated) and high-risk (pathogenic variant-associated) alleles (several 100 kb in length). Informative SNPs are those where the parents are *not* heterozygous for the same genotype. For AR conditions, haplotype phasing is carried out using gDNA obtained from the mother, father and an affected proband. For X-linked conditions, phasing is performed using gDNA from the mother and an affected proband only. Note that for either mode of inheritance, a sample from an unaffected proband (i.e. homozygous WT) can be used instead if necessary (not depicted in the diagram). Unfilled and filled triangles represent informative SNPs associated with the unaffected or affected haplotype respectively. Unfilled and filled ovals depict the WT or pathogenic variant-of-interest, respectively. **(C)** RHDO is an indirect method for determining whether the fetus has inherited the low- or the high-risk allele, and is carried out on maternal plasma DNA. For AR conditions, the fetal genotype is determined based on 1) the relative abundance of SNPs associated with the maternal affected and unaffected haplotype, and 2) detection of SNPs associated with the paternal affected or unaffected haplotype using sequential statistical modelling, such as the SPRT. For X-linked conditions, the paternal haplotype is not required for RHDO analysis. **(D)** RMD is carried out as a direct method of measuring the relative abundance of the WT or pathogenic variant-of-interest in the cfDNA sample, using similar statistical tests as are required for RHDO.

the potential to enable proband-free RHDO, as demonstrated in a recent study with relevance to  $\beta$ -thalassaemia, whereby ONT long-read sequencing was used to increase the length of individual haplotype blocks used for phasing analysis, and consequently improve statistical robustness [63]. In this study, Jiang and colleagues reported a failure to determine the maternal haplotype in one family as the closest heterozygous SNP was located outside of the PCR fragment boundary and thus not linkable to the variant-of-interest [63]. Further investigation is required to determine how common such local regions of homozygosity may be, and how this could negatively impact the utility of maternal haplotype phasing by long-read sequencing. PCR-related errors, including template-switching, should also be carefully considered with this approach.

cffDNA long-read sequencing has the potential to further increase the resolution and accuracy of fetal genotype classification as recombination events near the mutation site are more likely to be identified. Furthermore, the newly developed ONT readfish toolkit allows selective enrichment of reads-of-interest in real-time, which could assist with increasing sequencing depth specifically within the desired target regions [64]. Unfortunately, the error-rate of ONT is currently relatively high ( $\sim 5\%$ ) [65], although newer base calling models and chemistries are constantly being developed to improve accuracy towards levels that may be acceptable for clinical implementation. At present, PacBio sequencing offers greater accuracy, but the overall cost of this technology is higher than that of ONT which may preclude its use in publicly funded settings.

## RMD

RMD is an alternative method to RHDO, which has been investigated for the detection of maternally inherited variants in cffDNA. RMD is designed to directly detect single mutations, and operates under the assumption that there is a 50:50 ratio of the WT to pathogenic alleles in non-pregnant carriers [54] (Figure 3D). Similarly, if the mother and fetus share the same genotype, allelic balance is expected (Figure 3D). If the fetus is homozygous for the maternal pathogenic variant, however, a slight increase in the risk-associated allele relative to the FF will result, with the converse being true for a homozygous WT fetus (Figure 3D). For RMD to reliably replace invasive testing, the chosen method should be accurate at similar timepoints despite the low abundance of cffDNA in maternal circulation (i.e. at  $\sim 11$  weeks of gestation).

dPCR is the leading technology that has been applied to molecular counting [66–68], and its application in NIPT and NIPD research and development has been reviewed comprehensively elsewhere [69,70]. dPCR involves sample partitioning and target amplification within discrete reaction units thereby improving detection of rare variants within a high background of maternal plasma DNA, relative to conventional PCR-based methods, without the need for a standard curve [68,71,72]. To date, dPCR-based RMD for NIPD has not reached the clinic. However, this approach has shown clinical promise in several proof-of-concept studies for the detection of both paternally and maternally inherited variants, including for haemophilia [73,74], sickle cell disease [54,75], monogenic diabetes [76],  $\beta$ -thalassaemia [77–79], CF [80,81], inherited deafness [82], achondroplasia [83], and others [84,85] (Figure 2). The utility of haplotype-free RMD using dPCR is being considered for copy number variation (CNV) detection in autosomal recessive diseases, such as SMA, where gene copy number is negatively correlated with disease severity [86].

Previous generations of dPCR technologies were based on microfluidic devices with limited numbers of sample partitions [66,67]; however, several improvements have since resulted in the emergence of droplet dPCR (ddPCR) [87] (Figure 1). ddPCR is a highly sensitive, quantitative and high-throughput approach that involves separation of individual genomic targets into thousands ( $> 10,000$ ) of nanolitre-sized droplets using water–oil emulsion technology. The presence or absence of a variant-of-interest (i.e. WT vs pathogenic or maternal vs paternal) is ascertained on a droplet-by-droplet basis using fluorescence indicators.

RMD is clinically useful for detecting common pathogenic SNPs in the population using predesigned assays rapidly and at a low cost. A minimal FF threshold of  $> 4\%$  has typically been applied in the research setting using different methodologies for RMD-based testing for SNPs [74,86]. A major drawback of this approach that has delayed clinical implementation to date has been several reports of small numbers of incorrect and/or inconclusive results when using this technique [75–79,85]. For instance, Barrett and colleagues reported 5 misclassified (i.e. 1 false-positive and 4 false-negative) and 2 inconclusive results from a large cohort study of 59 individuals using ddPCR-based RMD for NIPD of sickle cell disease [75]. Sawakwongpra and colleagues similarly reported a misclassification rate of  $\sim 20\%$  (i.e. 5/24 cases) using this approach [78]. D'Aversa and colleagues reported 1 misclassified result out of 52 samples using ddPCR in the context of  $\beta$ -thalassaemia [77]. Perlado and colleagues also reported 1 false-positive and 5 inconclusive results [85]. Efforts to optimise the ddPCR methodology have been made by Constantinou and colleagues in their recent study which focused on RMD for  $\beta$ -thalassaemia; however, 1 misclassified and 6 inconclusive results out of 40 cases were still observed [79]. Insufficient FF ( $< 4\%$ ) is believed to be a major contributor towards such discrepancies,





One of the major limitations of a cell-based approach that has hindered its clinical implementation to date is rooted in the relatively low abundance of circulating fetal cells within the high background of nucleated maternal haematopoietic cells [102,105]. For instance, a recent study reported isolation of, on average, 2.5 cells per mL of blood across 8 cases [106]. Unlike the FF of cfDNA which increases with pregnancy progression, the optimal window for collection of fetal cells from the maternal bloodstream is believed to be ~10–14 weeks, during which time there is a high level of placental vascularisation [103]. Techniques are therefore required for the enrichment of fetal/trophoblastic cells, which can also be done alongside depletion of maternal cells. After enrichment, isolation of fetal cells then requires high-throughput processing for the detection of multiple fetal cell markers. Recently, a combined effort between medical genetics and materials science has enabled innovative advancements towards improving detection, enrichment, isolation and characterization of cell-based fetal DNA [107].

Another limitation of these cell-based approaches is that whole genome amplification is required prior to single cell sequencing, and this makes this technique susceptible to significant allele dropout and amplification errors [108]. It is feasible that optimization of isolation methods may overcome the challenge of low yields and a relatively narrow sampling window; however, the techniques are both time-intensive and costly for clinical implementation, and currently none of the many published methods of cell selection and identification have been validated for clinical use [103]. Trophoblast retrieval and isolation from the cervix (TRIC) is an alternative, semi-invasive method to obtain fetal cells which has been proposed to improve yields without a known associated risk of miscarriage [109,110]. Extraction of mononuclear extravillous trophoblasts (EVTs) by TRIC was reported to provide ~500–1500 cells per sample, far greater than from maternal peripheral blood samples. A possible limitation towards the clinical implementation of TRIC is that trained personnel are required for cell collection from the cervix, although this is not too dissimilar to commonly performed cervical cancer screening methods.

While cell-based NIPD has great promise in clinical practice to be a useful alternative to CVS and amniocentesis, much work is still required to improve the methods for high-throughput isolation of pure fetal cell populations and to ensure consistent test performance at low cost.

## Commercial screening for low-risk pregnancies

NIPD is currently commercially available for low-risk pregnancies (Figures 1 and 2). One such screening test, marketed under the brand name Vistara (Natera, Inc., San Carlos, CA, U.S.A.), screens for 25 autosomal dominant and X-linked conditions across 30 genes using a unique molecular indexing (UMI) technique for the NGS analysis [111] (Figure 2). This test requires genomic DNA from both parents to be tested alongside the cfDNA in order to assist with the interpretation, and it cannot detect variants which are maternally inherited (including those which are also X-linked). A recent review of this service looked at the results for 2208 women, of which 125 (5.7%) were positive [112]. The authors report no false-positive or -negative results, with a follow-up rate of 53.6%. It is important to take note of this low rate of follow-up in this study, reflected in a statement made by ACOG regarding single gene cfDNA screening, which states that there is insufficient data to provide information regarding the positive and negative predictive value in the general population, and therefore it does not currently recommend this screening in pregnancy [60]. In addition to the lack of long-term follow-up, it should also be noted that the minimum NGS coverage requirements for the target regions is  $\geq 97\%$  [111,112]. Although this information is provided in the literature, the majority of patients will likely be unaware that coverage of certain genes may not be 100%, and the impact that this could have on the interpretation of their result. Of note, the minimal FF requirement for this test is 4.5% [112].

Another commercially available screening test is the UNITY Screen™ (BillionToOne Inc., Menlo Park, CA, U.S.A.) (Figure 2). This test offers a maternal carrier screen for four recessive conditions, including CF, SMA, and haemoglobinopathies, as recommended by ACOG [60], with reflex cfDNA testing for all those identified as carriers [95]. This RMD-based screening test, which uses a Quantitative Counting Template (QCT) molecular counting approach rather than UMIs, can therefore provide a personalised fetal risk assessment without the need for a paternal sample. While the minimum FF required for the UNITY Screen™ is not explicitly stated on the company website, reliable results were reported to be obtained at a FF  $\geq 5\%$ , according to their recent publication [95]. With respect to CF and the group of inherited haemoglobinopathies, the UNITY Screen™ is not fully exhaustive for all disease-causing recessive variants within the *CFTR* and *HBA/HBB* genes, respectively (Figure 2). Even so, a recent review of this carrier screen with reflex single gene NIPT identified that, as first-line screening, it could offer significant cost savings for the healthcare system when compared to traditional carrier screening, and also a 2.4-fold improvement in the detection of affected fetuses [113]. The authors go on to state, however, that additional studies will be required to further assess the clinical utility, and there is as yet no support from national bodies for such screening based on analysis of cfDNA to be implemented.

Commercial availability of NIPD tests offers expansion of the service to include low-risk pregnancies; however, a growing concern in the health-care community is that expert pre- and post-test counselling may not be available to patients. Interpretation of results is essential to take into consideration the possibility of factors such as variable disease expressivity, incomplete penetrance, incomplete gene coverage, and risks of false-negative or false-positive results. Furthermore, this should be clearly distinguished from NIPD offered in pregnancies at known increased risk because of a family history or ultrasound findings. In the latter situation, cfDNA testing is diagnostic and does not require confirmation of positive findings by analysis of a fetal sample obtained by invasive testing. If the commercial test is offered in low-risk pregnancies, invasive testing will be required to confirm high-risk results, at least until sufficient data are available to demonstrate the sensitivity, specificity and positive predictive value of these tests.

## Conclusions

The ability to examine the fetal genotype at single nucleotide resolution from within maternal plasma DNA has revolutionised prenatal care. A plethora of approaches have been developed for low-level variant detection for paternally inherited and *de novo* variants, and dosage-based and molecular counting techniques for the detection of maternal variants. Proof-of-concept studies indicate that several additional methods for NIPD of monogenic disease have clinical utility, notably the discovery of long cfDNA fragments, and the next phase will be critical for bridging the gap between the research and clinical settings. While no single strategy will cover all possible rare diseases, keeping apace with technological advancements, streamlining workflows and reducing the overall cost of testing will be essential for the expansion of NIPD for monogenic disease in the clinic, but this can be challenging given the rarity of many conditions. Importantly, the minimal FF, starting genomic material, and depth of assay required across the various NIPD methodologies in order to obtain consistently accurate fetal genotype predictions across all modes of inheritance require deeper investigation.

Even if the possibility exists to carry out NIPD earlier in pregnancy than for invasive testing, there needs to be confidence that consistently high levels of sensitivity and specificity will be obtained. This could vary depending on the suspected diagnosis, and the chosen method for carrying out NIPD. There is an ongoing debate as to who should have access to testing, and the burden of information on patients as well as clinical researchers must be carefully considered prior to the implementation of new tests into the clinic. In addition, even with clear selection guidelines, disparities with regards to access and availability of resources must be taken into account so as to reduce inequalities. Conversations across multidisciplinary teams is essential for relevant case selection and to balance clinical resources with diagnostic yield. With the rapid strides being made in gene therapy for rare monogenic disorders, the panel of genes and diseases we are able to include is ever-growing, if we are to work towards accurate diagnosis and treatment of affected children from the earliest timepoint.

## Data Availability

There is no data available for sharing relating to this manuscript.

## Competing Interests

The views expressed here are those of the authors and not necessarily those of the NHS, the NIHR or the Department of Health and Social Care.

## Funding

This work was supported by the NIHR Biomedical Research Centre at Great Ormond Street Hospital, London, U.K. (to B.H. and E.S.; to L.S.C. (in part)).

## Open Access

Open access for this article was enabled by the participation of University College London in an all-inclusive *Read & Publish* agreement with Portland Press and the Biochemical Society under a transformative agreement with JISC.

## CRedit Author Contribution

**Britt Hanson:** Writing—original draft. **Elizabeth Scotchman:** Writing—original draft. **Lyn Chitty:** Conceptualization, Supervision, Funding acquisition, Writing—review & editing. **Natalie Chandler:** Writing—review & editing.

## Abbreviations

ACOG, American College of Obstetricians and Gynecologists; AD, autosomal dominant; AR, autosomal recessive; BMD, Becker muscular dystrophy; CAH, congenital adrenal hyperplasia; CF, cystic fibrosis; cfDNA, cell-free DNA; cffDNA, cell-free fetal DNA; CNV, copy number variation; CPM, confined placental mosaicism; cSMART, circulating single-molecule amplification and resequencing technology; CVS, chorionic villus sampling; ddPCR, droplet dPCR; DMD, Duchenne muscular dystrophy; dPCR, digital polymerase chain reaction; FF, fetal fraction; NGS, next generation sequencing; NIPD, non-invasive prenatal diagnosis; NIPT, non-invasive prenatal testing; ONT, Oxford Nanopore Technologies; PacBio, Pacific Biosciences; PCR-RED, PCR-restriction enzyme digestion; qPCR, quantitative polymerase chain reaction; RMD, relative mutation dosage; RHD, rhesus D blood group; RHDO, relative haplotype dosage analysis; SMA, spinal muscular atrophy; SNP, single nucleotide polymorphism; SPRT, sequential probability ratio test; TLA, targeted locus amplification; TRIC, trophoblast retrieval and isolation from the cervix; WT, wildtype.

## References

- 1 Nguengang Wakap, S., Lambert, D.M., Olry, A., Rodwell, C., Gueydan, C., Lanneau, V. et al. (2020) Estimating cumulative point prevalence of rare diseases: analysis of the Orphanet database. *Eur. J. Hum. Genet.* **28**, 165–173, <https://doi.org/10.1038/s41431-019-0508-0>
- 2 Alfirevic, Z., Navaratnam, K. and Mujzinovic, F. (2017) Amniocentesis and chorionic villus sampling for prenatal diagnosis. *Cochrane Database Syst. Rev.* **9**, CD003252, <https://doi.org/10.1002/14651858.CD003252.pub2>
- 3 Salomon, L.J., Sotiriadis, A., Wulff, C.B., Odibo, A. and Akolekar, R. (2019) Risk of miscarriage following amniocentesis or chorionic villus sampling: systematic review of literature and updated meta-analysis. *Ultrasound Obstet. Gynecol.* **54**, 442–451, <https://doi.org/10.1002/uog.20353>
- 4 Hill, M., Compton, C., Karunaratna, M., Lewis, C. and Chitty, L. (2014) Client views and attitudes to non-invasive prenatal diagnosis for sickle cell disease, thalassaemia and cystic fibrosis. *J. Genet. Couns.* **23**, 1012–1021, <https://doi.org/10.1007/s10897-014-9725-4>
- 5 Lewis, C., Hill, M. and Chitty, L.S. (2014) Non-invasive prenatal diagnosis for single gene disorders: experience of patients. *Clin. Genet.* **85**, 336–342, <https://doi.org/10.1111/cge.12179>
- 6 Lench, N., Barrett, A., Fielding, S., McKay, F., Hill, M., Jenkins, L. et al. (2013) The clinical implementation of non-invasive prenatal diagnosis for single-gene disorders: challenges and progress made. *Prenat. Diagn.* **33**, 555–562, <https://doi.org/10.1002/pd.4124>
- 7 Lo, Y.M.D., Corbetta, N., Chamberlain, P.F., Rai, V., Sargent, I.L., Redman, C.W.G. et al. (1997) Presence of fetal DNA in maternal plasma and serum. *Lancet North Am. Ed.* **350**, 485–487, [https://doi.org/10.1016/S0140-6736\(97\)02174-0](https://doi.org/10.1016/S0140-6736(97)02174-0)
- 8 Lo, Y.M., Chan, K.C., Sun, H., Chen, E.Z., Jiang, P., Lun, F.M. et al. (2010) Maternal plasma DNA sequencing reveals the genome-wide genetic and mutational profile of the fetus. *Sci. Transl. Med.* **2**, 61ra91, <https://doi.org/10.1126/scitranslmed.3001720>
- 9 Gai, W., Zhou, Z., Agbor-Enoh, S., Fan, X., Lian, S., Jiang, P. et al. (2021) Applications of genetic-epigenetic tissue mapping for plasma DNA in prenatal testing, transplantation and oncology. *Elife* **10**, <https://doi.org/10.7554/eLife.64356>
- 10 Lo, Y.M., Tein, M.S., Lau, T.K., Haines, C.J., Leung, T.N., Poon, P.M. et al. (1998) Quantitative analysis of fetal DNA in maternal plasma and serum: implications for noninvasive prenatal diagnosis. *Am. J. Hum. Genet.* **62**, 768–775, <https://doi.org/10.1086/301800>
- 11 Scotchman, E., Shaw, J., Paternoster, B., Chandler, N. and Chitty, L.S. (2020) Non-invasive prenatal diagnosis and screening for monogenic disorders. *Eur. J. Obstet. Gynecol. Reprod. Biol.* **253**, 320–327, <https://doi.org/10.1016/j.ejogrb.2020.08.001>
- 12 Sun, K., Jiang, P., Wong, A.I.C., Cheng, Y.K.Y., Cheng, S.H., Zhang, H. et al. (2018) Size-tagged preferred ends in maternal plasma DNA shed light on the production mechanism and show utility in noninvasive prenatal testing. *Proc. Natl. Acad. Sci. U.S.A.* **115**, E5106–E5114, <https://doi.org/10.1073/pnas.1804134115>
- 13 Yu, S.C.Y., Jiang, P., Peng, W., Cheng, S.H., Cheung, Y.T.T., Tse, O.Y.O. et al. (2021) Single-molecule sequencing reveals a large population of long cell-free DNA molecules in maternal plasma. *Proc. Natl. Acad. Sci. U.S.A.* **118**, <https://doi.org/10.1073/pnas.2114937118>
- 14 Navaratnam, K. and Alfirevic, Z. (2022) Amniocentesis and chorionic villus sampling: Green-top Guideline No. 8 July 2021: Green-top Guideline No. 8. *BJOG* **129**, e1–e15
- 15 Hill, M., Lewis, C., Jenkins, L., Allen, S., Elles, R.G. and Chitty, L.S. (2012) Implementing noninvasive prenatal fetal sex determination using cell-free fetal DNA in the United Kingdom. *Expert Opin. Biol. Ther.* **12**, S119–S126, <https://doi.org/10.1517/14712598.2012.666522>
- 16 Flori, E., Doray, B., Gautier, E., Kohler, M., Ernault, P., Flori, J. et al. (2004) Circulating cell-free fetal DNA in maternal serum appears to originate from cyto- and syncytio-trophoblastic cells. Case report. *Hum. Reprod.* **19**, 723–724, <https://doi.org/10.1093/humrep/deh117>
- 17 Alberry, M., Maddocks, D., Jones, M., Abdel Hadi, M., Abdel-Fattah, S., Avent, N. et al. (2007) Free fetal DNA in maternal plasma in anembryonic pregnancies: confirmation that the origin is the trophoblast. *Prenat. Diagn.* **27**, 415–418, <https://doi.org/10.1002/pd.1700>
- 18 Lo, Y.M., Zhang, J., Leung, T.N., Lau, T.K., Chang, A.M. and Hjelm, N.M. (1999) Rapid clearance of fetal DNA from maternal plasma. *Am. J. Hum. Genet.* **64**, 218–224, <https://doi.org/10.1086/302205>
- 19 Pergament, E., Cuckle, H., Zimmermann, B., Banjevic, M., Sigurjonsson, S., Ryan, A. et al. (2014) Single-nucleotide polymorphism-based noninvasive prenatal screening in a high-risk and low-risk cohort. *Obstet. Gynecol.* **124**, 210–218, <https://doi.org/10.1097/AOG.0000000000000363>
- 20 Deng, C. and Liu, S. (2022) Factors affecting the fetal fraction in noninvasive prenatal screening: a review. *Front Pediatr.* **10**, 812781, <https://doi.org/10.3389/fped.2022.812781>
- 21 Kinnings, S.L., Geis, J.A., Almasri, E., Wang, H., Guan, X., McCullough, R.M. et al. (2015) Factors affecting levels of circulating cell-free fetal DNA in maternal plasma and their implications for noninvasive prenatal testing. *Prenat. Diagn.* **35**, 816–822, <https://doi.org/10.1002/pd.4625>
- 22 Lo, Y.M., Tsui, N.B., Chiu, R.W., Lau, T.K., Leung, T.N., Heung, M.M. et al. (2007) Plasma placental RNA allelic ratio permits noninvasive prenatal chromosomal aneuploidy detection. *Nat. Med.* **13**, 218–223, <https://doi.org/10.1038/nm1530>

- 23 Ravitsky, V., Roy, M.C., Haidar, H., Henneman, L., Marshall, J., Newson, A.J. et al. (2021) The emergence and global spread of noninvasive prenatal testing. *Annu. Rev. Genomics Hum. Genet.* **22**, 309–338, <https://doi.org/10.1146/annurev-genom-083118-015053>
- 24 Lo, Y.M. and Chiu, R.W. (2008) Noninvasive prenatal diagnosis of fetal chromosomal aneuploidies by maternal plasma nucleic acid analysis. *Clin. Chem.* **54**, 461–466, <https://doi.org/10.1373/clinchem.2007.100016>
- 25 Wilkins-Haug, L., Zhang, C., Cerveira, E., Ryan, M., Mil-Homens, A., Zhu, Q. et al. (2018) Biological explanations for discordant noninvasive prenatal test results: Preliminary data and lessons learned. *Prenat. Diagn.* **38**, 445–458, <https://doi.org/10.1002/pd.5260>
- 26 Hartwig, T.S., Ambye, L., Sorensen, S. and Jorgensen, F.S. (2017) Discordant non-invasive prenatal testing (NIPT) - a systematic review. *Prenat. Diagn.* **37**, 527–539, <https://doi.org/10.1002/pd.5049>
- 27 Drury, S., Mason, S., McKay, F., Lo, K., Boustred, C., Jenkins, L. et al. (2016) Implementing non-invasive prenatal diagnosis (NIPD) in a National Health Service Laboratory; from dominant to recessive disorders. *Adv. Exp. Med. Biol.* **924**, 71–75, [https://doi.org/10.1007/978-3-319-42044-8\\_14](https://doi.org/10.1007/978-3-319-42044-8_14)
- 28 Saito, H., Sekizawa, A., Morimoto, T., Suzuki, M. and Yanaiharu, T. (2000) Prenatal DNA diagnosis of a single-gene disorder from maternal plasma. *Lancet* **356**, 1170, [https://doi.org/10.1016/S0140-6736\(00\)02767-7](https://doi.org/10.1016/S0140-6736(00)02767-7)
- 29 Amicucci, P., Gennarelli, M., Novelli, G. and Dallapiccola, B. (2000) Prenatal diagnosis of myotonic dystrophy using fetal DNA obtained from maternal plasma. *Clin. Chem.* **46**, 301–302, <https://doi.org/10.1093/clinchem/46.2.301>
- 30 Hill, M., Finning, K., Martin, P., Hogg, J., Meaney, C., Norbury, G. et al. (2011) Non-invasive prenatal determination of fetal sex: translating research into clinical practice. *Clin. Genet.* **80**, 68–75, <https://doi.org/10.1111/j.1399-0004.2010.01533.x>
- 31 Devaney, S.A., Palomaki, G.E., Scott, J.A. and Bianchi, D.W. (2011) Noninvasive fetal sex determination using cell-free fetal DNA: a systematic review and meta-analysis. *JAMA* **306**, 627–636, <https://doi.org/10.1001/jama.2011.1114>
- 32 van der Schoot, C.E., Thurik, F.F., Veldhuisen, B. and de Haas, M. (2013) Noninvasive prenatal blood group and HPA-1a genotyping: the current European experience. *Transfusion* **53**, 2834–2836, <https://doi.org/10.1111/trf.12411>
- 33 Clausen, F.B., Rieneck, K., Krog, G.R., Bundgaard, B.S. and Dziegiel, M.H. (2019) Noninvasive antenatal screening for fetal RHD in RhD negative women to guide targeted Anti-D prophylaxis. *Methods Mol. Biol.* **1885**, 347–359, [https://doi.org/10.1007/978-1-4939-8889-1\\_23](https://doi.org/10.1007/978-1-4939-8889-1_23)
- 34 Chitty, L.S., Griffin, D.R., Meaney, C., Barrett, A., Khalil, A., Pajkrt, E. et al. (2011) New aids for the non-invasive prenatal diagnosis of achondroplasia: dysmorphic features, charts of fetal size and molecular confirmation using cell-free fetal DNA in maternal plasma. *Ultrasound Obstet. Gynecol.* **37**, 283–289, <https://doi.org/10.1002/uog.8893>
- 35 Chitty, L.S., Khalil, A., Barrett, A.N., Pajkrt, E., Griffin, D.R. and Cole, T.J. (2013) Safe, accurate, prenatal diagnosis of thanatophoric dysplasia using ultrasound and free fetal DNA. *Prenat. Diagn.* **33**, 416–423, <https://doi.org/10.1002/pd.4066>
- 36 Mellis, R., Chandler, N., Jenkins, L. and Chitty, L.S. (2020) The role of sonographic phenotyping in delivering an efficient noninvasive prenatal diagnosis service for FGFR3-related skeletal dysplasias. *Prenat. Diagn.* **40**, 785–791, <https://doi.org/10.1002/pd.5687>
- 37 Chitty, L.S., Mason, S., Barrett, A.N., McKay, F., Lench, N., Daley, R. et al. (2015) Non-invasive prenatal diagnosis of achondroplasia and thanatophoric dysplasia: next-generation sequencing allows for a safer, more accurate, and comprehensive approach. *Prenat. Diagn.* **35**, 656–662, <https://doi.org/10.1002/pd.4583>
- 38 Hill, M., Twiss, P., Verhoef, T.I., Drury, S., McKay, F., Mason, S. et al. (2015) Non-invasive prenatal diagnosis for cystic fibrosis: detection of paternal mutations, exploration of patient preferences and cost analysis. *Prenat. Diagn.* **35**, 950–958, <https://doi.org/10.1002/pd.4585>
- 39 Chandler, N.J., Ahlfors, H., Drury, S., Mellis, R., Hill, M., McKay, F.J. et al. (2020) Noninvasive prenatal diagnosis for cystic fibrosis: implementation, uptake, outcome, and implications. *Clin. Chem.* **66**, 207–216, <https://doi.org/10.1373/clinchem.2019.305011>
- 40 Parks, M., Court, S., Cleary, S., Clokie, S., Hewitt, J., Williams, D. et al. (2016) Non-invasive prenatal diagnosis of Duchenne and Becker muscular dystrophies by relative haplotype dosage. *Prenat. Diagn.* **36**, 312–320, <https://doi.org/10.1002/pd.4781>
- 41 Parks, M., Court, S., Bowns, B., Cleary, S., Clokie, S., Hewitt, J. et al. (2017) Non-invasive prenatal diagnosis of spinal muscular atrophy by relative haplotype dosage. *Eur. J. Hum. Genet.* **25**, 416–422, <https://doi.org/10.1038/ejhg.2016.195>
- 42 Young, E., Bowns, B., Gerrish, A., Parks, M., Court, S., Clokie, S. et al. (2020) Clinical Service Delivery of Noninvasive Prenatal Diagnosis by Relative Haplotype Dosage for Single-Gene Disorders. *J. Mol. Diagn.* **22**, 1151–1161, <https://doi.org/10.1016/j.jmoldx.2020.06.001>
- 43 Jenkins, L.A., Deans, Z.C., Lewis, C. and Allen, S. (2018) Delivering an accredited non-invasive prenatal diagnosis service for monogenic disorders and recommendations for best practice. *Prenat. Diagn.* **38**, 44–51, <https://doi.org/10.1002/pd.5197>
- 44 D'Aversa, E., Breveglieri, G., Pellegatti, P., Guerra, G., Gambari, R. and Borgatti, M. (2018) Non-invasive fetal sex diagnosis in plasma of early weeks pregnant using droplet digital PCR. *Mol. Med.* **24**, 14, <https://doi.org/10.1186/s10020-018-0016-7>
- 45 Pacault, M., Verebi, C., Lopez, M., Vaucouleur, N., Orhan, L., Deburgrave, N. et al. (2022) Non-invasive prenatal diagnosis of single gene disorders by paternal mutation exclusion: 3 years of clinical experience. *BJOG* **129**, 1879–1886, <https://doi.org/10.1111/1471-0528.17201>
- 46 Tardy-Guidollet, V., Menassa, R., Costa, J.M., David, M., Bouvattier-Morel, C., Baumann, C. et al. (2014) New management strategy of pregnancies at risk of congenital adrenal hyperplasia using fetal sex determination in maternal serum: French cohort of 258 cases (2002–2011). *J. Clin. Endocrinol. Metab.* **99**, 1180–1188, <https://doi.org/10.1210/jc.2013-2895>
- 47 New, M.I., Tong, Y.K., Yuen, T., Jiang, P., Pina, C., Chan, K.C. et al. (2014) Noninvasive prenatal diagnosis of congenital adrenal hyperplasia using cell-free fetal DNA in maternal plasma. *J. Clin. Endocrinol. Metab.* **99**, E1022–E1030, <https://doi.org/10.1210/jc.2014-1118>
- 48 Rieneck, K., Egeberg Hother, C., Clausen, F.B., Jakobsen, M.A., Bergholt, T., Hellmuth, E. et al. (2020) Next generation sequencing-based fetal ABO blood group prediction by analysis of cell-free DNA from maternal plasma. *Transfus. Med. Hemother.* **47**, 45–53, <https://doi.org/10.1159/000505464>
- 49 Xiong, W., Wang, D., Gao, Y., Gao, Y., Wang, H., Guan, J. et al. (2015) Reproductive management through integration of PGD and MPS-based noninvasive prenatal screening/diagnosis for a family with GJB2-associated hearing impairment. *Sci. China Life Sci.* **58**, 829–838, <https://doi.org/10.1007/s11427-015-4936-y>
- 50 West Midlands Regional Genetics Laboratory: NIPD for Congenital adrenal hyperplasia (CAH). <https://bwc.nhs.uk/download.cfm?doc=docm93jjm4n4060.pdf&ver=6057> [Accessed: 15 August 2022]



- 80 Debrand, E., Lykoudi, A., Bradshaw, E. and Allen, S.K. (2015) A non-invasive droplet digital PCR (ddPCR) assay to detect paternal CFTR mutations in the cell-free fetal DNA (cffDNA) of three pregnancies at risk of cystic fibrosis via compound heterozygosity. *PLoS ONE* **10**, e0142729, <https://doi.org/10.1371/journal.pone.0142729>
- 81 Gruber, A., Pacault, M., El Khattabi, L.A., Vaucouleur, N., Orhant, L., Bienvenu, T. et al. (2018) Non-invasive prenatal diagnosis of paternally inherited disorders from maternal plasma: detection of NF1 and CFTR mutations using droplet digital PCR. *Clin. Chem. Lab. Med.* **56**, 728–738, <https://doi.org/10.1515/cclm-2017-0689>
- 82 Chang, M.Y., Kim, A.R., Kim, M.Y., Kim, S., Yoon, J., Han, J.J. et al. (2016) Development of novel noninvasive prenatal testing protocol for whole autosomal recessive disease using picodroplet digital PCR. *Sci. Rep.* **6**, 37153, <https://doi.org/10.1038/srep37153>
- 83 Orhant, L., Anselem, O., Fradin, M., Becker, P.H., Beugnet, C., Deburgrave, N. et al. (2016) Droplet digital PCR combined with minisequencing, a new approach to analyze fetal DNA from maternal blood: application to the non-invasive prenatal diagnosis of achondroplasia. *Prenat. Diagn.* **36**, 397–406, <https://doi.org/10.1002/pd.4790>
- 84 Camunas-Soler, J., Lee, H., Hudgins, L., Hintz, S.R., Blumenfeld, Y.J., El-Sayed, Y.Y. et al. (2018) Noninvasive prenatal diagnosis of single-gene disorders by use of droplet digital PCR. *Clin. Chem.* **64**, 336–345, <https://doi.org/10.1373/clinchem.2017.278101>
- 85 Perlado, S., Bustamante-Aragones, A., Donas, M., Lorda-Sanchez, I., Plaza, J., de Alba, M.R. et al. (2016) Fetal genotyping in maternal blood by digital PCR: towards NIPD of monogenic disorders independently of parental origin. *PLoS ONE* **11**, e0153258, <https://doi.org/10.1371/journal.pone.0153258>
- 86 Wei, X., Lv, W., Tan, H., Liang, D. and Wu, L. (2020) Development and validation of a haplotype-free technique for non-invasive prenatal diagnosis of spinal muscular atrophy. *J. Clin. Lab. Anal.* **34**, e23046, <https://doi.org/10.1002/jcla.23046>
- 87 Hindson, B.J., Ness, K.D., Masquelier, D.A., Belgrader, P., Heredia, N.J., Makarewicz, A.J. et al. (2011) High-throughput droplet digital PCR system for absolute quantitation of DNA copy number. *Anal. Chem.* **83**, 8604–8610, <https://doi.org/10.1021/ac202028g>
- 88 Lv, W., Wei, X., Guo, R., Liu, Q., Zheng, Y., Chang, J. et al. (2015) Noninvasive prenatal testing for Wilson disease by use of circulating single-molecule amplification and resequencing technology (cSMART). *Clin. Chem.* **61**, 172–181, <https://doi.org/10.1373/clinchem.2014.229328>
- 89 Han, M., Li, Z., Wang, W., Huang, S., Lu, Y., Gao, Z. et al. (2017) A quantitative cSMART assay for noninvasive prenatal screening of autosomal recessive nonsyndromic hearing loss caused by GJB2 and SLC26A4 mutations. *Genet. Med.* **19**, 1309–1316, <https://doi.org/10.1038/gim.2017.54>
- 90 Chen, Y., Liu, Y., Wang, B., Mao, J., Wang, T., Ye, K. et al. (2016) Development and validation of a fetal genotyping assay with potential for noninvasive prenatal diagnosis of hereditary hearing loss. *Prenat. Diagn.* **36**, 1233–1241, <https://doi.org/10.1002/pd.4962>
- 91 Xiong, L., Barrett, A.N., Hua, R., Ho, S., Jun, L., Chan, K. et al. (2018) Non-invasive prenatal testing for fetal inheritance of maternal  $\beta$ -thalassaemia mutations using targeted sequencing and relative mutation dosage: a feasibility study. *BJOG* **125**, 461–468, <https://doi.org/10.1111/1471-0528.15045>
- 92 Lv, W., Linpeng, S., Li, Z., Liang, D., Jia, Z., Meng, D. et al. (2021) Noninvasive prenatal diagnosis for pregnancies at risk for  $\beta$ -thalassaemia: a retrospective study. *BJOG* **128**, 448–457, <https://doi.org/10.1111/1471-0528.16295>
- 93 Lv, W., Liang, L., Chen, X., Li, Z., Liang, D., Zhu, H. et al. (2021) Noninvasive prenatal testing of methylmalonic acidemia cblC type using the cSMART assay for MMACHC Gene Mutations. *Front Genet.* **12**, 750719, <https://doi.org/10.3389/fgene.2021.750719>
- 94 Lv, W., Li, Z., Wei, X., Zhu, H., Teng, Y., Zhou, M. et al. (2019) Noninvasive fetal genotyping in pregnancies at risk for PKU using a comprehensive quantitative cSMART assay for PAH gene mutations: a clinical feasibility study. *BJOG* **126**, 1466–1474, <https://doi.org/10.1111/1471-0528.15869>
- 95 Tsao, D.S., Silas, S., Landry, B.P., Itzep, N.P., Nguyen, A.B., Greenberg, S. et al. (2019) A novel high-throughput molecular counting method with single base-pair resolution enables accurate single-gene NIPT. *Sci. Rep.* **9**, 14382, <https://doi.org/10.1038/s41598-019-50378-8>
- 96 Yang, X., Zhou, Q., Zhou, W., Zhong, M., Guo, X., Wang, X. et al. (2019) A cell-free DNA barcode-enabled single-molecule test for noninvasive prenatal diagnosis of monogenic disorders: application to  $\beta$ -thalassaemia. *Adv. Sci. (Weinh)* **6**, 1802332, <https://doi.org/10.1002/advs.201802332>
- 97 van Campen, J., Silcock, L., Yau, S., Daniel, Y., Ahn, J.W., Ogilvie, C. et al. (2020) A novel non-invasive prenatal sickle cell disease test for all at-risk pregnancies. *Br. J. Haematol.* **190**, 119–124, <https://doi.org/10.1111/bjh.16529>
- 98 Cutts, A., Vavoulis, D.V., Petrou, M., Smith, F., Clark, B., Henderson, S. et al. (2019) A method for noninvasive prenatal diagnosis of monogenic autosomal recessive disorders. *Blood* **134**, 1190–1193, <https://doi.org/10.1182/blood.2019002099>
- 99 Lo, Y.M.D., Han, D.S.C., Jiang, P. and Chiu, R.W.K. (2021) Epigenetics, fragmentomics, and topology of cell-free DNA in liquid biopsies. *Science* **372**, eaaw3616, <https://doi.org/10.1126/science.aaw3616>
- 100 Mouawia, H., Saker, A., Jais, J.P., Benachi, A., Bussi eres, L., Lacour, B. et al. (2012) Circulating trophoblastic cells provide genetic diagnosis in 63 fetuses at risk for cystic fibrosis or spinal muscular atrophy. *Reprod. Biomed. Online* **25**, 508–520, <https://doi.org/10.1016/j.rbmo.2012.08.002>
- 101 Bianchi, D.W., Simpson, J.L., Jackson, L.G., Elias, S., Holzgreve, W., Evans, M.I. et al. (2002) Fetal gender and aneuploidy detection using fetal cells in maternal blood: analysis of NIFTY I data. National Institute of Child Health and Development Fetal Cell Isolation Study. *Prenat. Diagn.* **22**, 609–615, <https://doi.org/10.1002/pd.347>
- 102 Chen, F., Liu, P., Gu, Y., Zhu, Z., Nanisetti, A., Lan, Z. et al. (2017) Isolation and whole genome sequencing of fetal cells from maternal blood towards the ultimate non-invasive prenatal testing. *Prenat. Diagn.* **37**, 1311–1321, <https://doi.org/10.1002/pd.5186>
- 103 Vossaert, L., Chakchouk, I., Zemet, R. and Van den Veyver, I.B. (2021) Overview and recent developments in cell-based noninvasive prenatal testing. *Prenat. Diagn.* **41**, 1202–1214, <https://doi.org/10.1002/pd.5957>
- 104 Bianchi, D.W., Zickwolf, G.K., Weil, G.J., Sylvester, S. and DeMaria, M.A. (1996) Male fetal progenitor cells persist in maternal blood for as long as 27 years postpartum. *Proc. Natl. Acad. Sci. U.S.A.* **93**, 705–708, <https://doi.org/10.1073/pnas.93.2.705>
- 105 Huang, C.E., Ma, G.C., Jou, H.J., Lin, W.H., Lee, D.J., Lin, Y.S. et al. (2017) Noninvasive prenatal diagnosis of fetal aneuploidy by circulating fetal nucleated red blood cells and extravillous trophoblasts using silicon-based nanostructured microfluidics. *Mol. Cytogenet.* **10**, 44, <https://doi.org/10.1186/s13039-017-0343-3>

- 106 Toft, C.L.F., Ingerslev, H.J., Kesmodel, U.S., Hatt, L., Singh, R., Ravn, K. et al. (2021) Cell-based non-invasive prenatal testing for monogenic disorders: confirmation of unaffected fetuses following preimplantation genetic testing. *J. Assist. Reprod. Genet.* **38**, 1959–1970, <https://doi.org/10.1007/s10815-021-02104-5>
- 107 Wei, X., Chen, K., Guo, S., Liu, W. and Zhao, X.Z. (2021) Emerging Microfluidic Technologies for the Detection of Circulating Tumor Cells and Fetal Nucleated Red Blood Cells. *ACS Appl. Bio. Mater.* **4**, 1140–1155, <https://doi.org/10.1021/acscabm.0c01325>
- 108 Hou, Y., Wu, K., Shi, X., Li, F., Song, L., Wu, H. et al. (2015) Comparison of variations detection between whole-genome amplification methods used in single-cell resequencing. *Gigascience* **4**, 37, <https://doi.org/10.1186/s13742-015-0068-3>
- 109 Imudia, A.N., Suzuki, Y., Kilburn, B.A., Yelian, F.D., Diamond, M.P., Romero, R. et al. (2009) Retrieval of trophoblast cells from the cervical canal for prediction of abnormal pregnancy: a pilot study. *Hum. Reprod.* **24**, 2086–2092, <https://doi.org/10.1093/humrep/dep206>
- 110 Bolnick, J.M., Kilburn, B.A., Bajpayee, S., Reddy, N., Jeelani, R., Crone, B. et al. (2014) Trophoblast retrieval and isolation from the cervix (TRIC) for noninvasive prenatal screening at 5 to 20 weeks of gestation. *Fertil. Steril.* **102**, 135e6–142e6, <https://doi.org/10.1016/j.fertnstert.2014.04.008>
- 111 Zhang, J., Li, J., Saucier, J.B., Feng, Y., Jiang, Y., Sinson, J. et al. (2019) Non-invasive prenatal sequencing for multiple Mendelian monogenic disorders using circulating cell-free fetal DNA. *Nat. Med.* **25**, 439–447, <https://doi.org/10.1038/s41591-018-0334-x>
- 112 Mohan, P., Lemoine, J., Trotter, C., Rakova, I., Billings, P., Peacock, S. et al. (2022) Clinical experience with non-invasive prenatal screening for single-gene disorders. *Ultrasound Obstet. Gynecol.* **59**, 33–39, <https://doi.org/10.1002/uog.23756>
- 113 Riku, S., Hedriana, H., Carozza, J.A. and Hoskovec, J. (2022) Reflex single-gene non-invasive prenatal testing is associated with markedly better detection of fetuses affected with single-gene recessive disorders at lower cost. *J. Med. Econ.* **25**, 403–411, <https://doi.org/10.1080/13696998.2022.2053384>