

Research Article

The effect of *Euphorbia szovitsii* Fisch. & C.A.Mey extract on the viability and the proliferation of MDA-MB-231 cell line

Majid Asadi-Samani¹, Mahmoud Rafieian-Kopaei¹, Zahra Lorigooini¹ and Hedayatollah Shirzad²

¹Medical Plants Research Center, Basic Health Sciences Institute, Shahrekord University of Medical Sciences, Shahrekord, Iran; ²Cellular and Molecular Research Center, Basic Health Sciences Institute, Shahrekord University of Medical Sciences, Shahrekord, Iran

Correspondence: Hedayatollah Shirzad (shirzadeh@yahoo.com)



Some medicinal herbs and compounds are known to target cancer cells, but the success of them as anticancer compounds depends to a large extent on their ability to activate pathways that kill cancer cells by arresting cell cycle and inducing apoptosis. The aim of the present study was to determine the anticancer effects of *Euphorbia szovitsii* Fisch. & C.A.Mey. on the breast cancer cells to reveal the underlying mechanism of its anti-breast cancer properties. In this experimental study, triple negative breast cancer cell line (MDA-MB-231) was cultivated in RPMI-1640 medium. Hydroalcoholic extract (70:30) of aerial parts of the plant was prepared. The cultured cells were treated with different concentrations (0–1000 µg/ml) of *E. szovitsii* extract for 24 and 48 h. Toxicity of the extract on MDA-MB-231 cells was examined using MTT (3-[4,5-dimethyl-2-thiazolyl]-2, 5 diphenyl tetrazolium bromide) test. The Annexin V–FITC Apoptosis Detection Kit was used to evaluate apoptosis and necrosis. Flow cytometry technique was employed to differentiate different phases of the cell cycle in the cells. Data were analyzed by GraphPad Prism and SPSS software. After 24 and 48 h, the IC₅₀ values were respectively 76.78 (95% CI = 60.75–97.05; $R = 0.8588$) and 59.71 (95% CI = 46.25–77.09; $R = 0.8543$) µg/ml for *E. szovitsii*. The extract exhibited antiproliferative effects against MDA-MB-231 cells in a dose-dependent manner. Annexin V-FITC/PI assay confirmed that the extract was able to induce apoptosis in MDA-MB-231 cells. Moreover, treatment with the extract resulted in cell cycle arrest at G₁ phase. Therefore, *E. szovitsii* could induce apoptosis and cycle arrest in the MDA-MB-231 cell line. It might be a good resource of natural products for producing anti-breast cancer drugs.

Introduction

Breast cancer is the most common cancer in women around the world. It is the leading cause of cancer death in less developed countries. According to the global cancer project (2012), nearly 1.7 million new cases of breast cancer have been diagnosed (12% of all new cancer cases) and 521,907 cases of deaths due to breast cancer occurred in the world [1,2].

Despite the many drugs used to treat breast cancer, the incidence and prevalence of this cancer is still high. Besides that, many of the chemical drugs used to treat breast cancer lead to several side effects that limit their use for patients. Meanwhile, the production of drugs with higher efficacy and fewer side effects have always been taken into account. Medicinal plants are one of the most important natural resources of the options offered by researchers and pharmacists and, if they are used at certain doses, they will show the highest compatibility with the immune system. Medicinal plants, in many cases, have antioxidant and

Received: 04 September 2018
Revised: 25 October 2018
Accepted: 31 October 2018

Accepted Manuscript Online:
20 November 2018
Version of Record published:
11 January 2019

anti-inflammatory properties that can reduce the side effects of chemical drugs [3,4]. In previous studies on the anticancer effects of medicinal plants in Chaharmahal and Bakhtiari province, a plant from the Euphorbia family, namely, *E. szovitsii* Fisch. & C.A.Mey., was among the plants that exhibited anticancer effects on various cancers such as breast cancer. In addition, in examining cells under treatment, significant morphological changes were observed, including major changes in the normal state of cell membrane and cell granulation, shrinkage of the membrane of the nucleus, and decrease in the cell volume. In addition, a number of cells have been isolated from the flask floor and floated.

In this paper, we have evaluated the anticancer effects from *E. szovitsii* on the MDA-MB-231 cells to determine the underlying mechanism of its anticancer effects.

Experimental

Cell culture

Triple negative breast cancer cell line (MDA-MB-231 cells) was purchased from Pasteur Institute, Iran-Tehran. The cells were grown in RPMI-1640 medium at 37°C in a humidified atmosphere with 5% CO₂, 95% air. The medium was refreshed every 24 h, and the cells were trypsinized (0.1% trypsin) on reaching 80% confluency.

Preparation of the herbal extract

E. szovitsii was collected from Saman in Chaharmahal and Bakhtiyari province and air dried in the shade at RT (25°C). The plant was authenticated by Dr Shirmardi (Research Center for Agricultural & Natural Resources, Shahrekord, Iran). A voucher specimen was prepared and deposited in Herbarium unit of Shahrekord University of Medical Sciences (Skums-935). The aerial parts were ground by a mechanical grinder. The hydroalcoholic extract (alcohol:water = 70:30) of the plant was provided using maceration method at room temperature. The extract was then filtered through Whatman paper no. 40, and the resultant filtrate was evaporated under negative pressure using a rotary vacuum evaporator.

Cell viability assay

For evaluating the cell viability, MDA-MB231 cells were exposed to a wide concentration range of the *E. szovitsii* extract (0–1000 µg/ml). Toxicity of the extract on breast cancer cells was examined using MTT (3-[4,5-dimethyl-2-thiazolyl]-2, 5 diphenyl tetrazolium bromide) assay 24 and 48 h after seeding.

Briefly, 7×10^3 cells were seeded into each well of a 96-well plate. After 24 h, the attached cells were treated with different concentrations (0–1000 µg/ml) of *E. szovitsii* extract in two time intervals (24 and 48 h). The negative control was not treated with any concentration of *E. szovitsii* extract. After incubation, supernatant was discarded and the attached cells rinsed with PBS. Then, 100 MTT solution (2 mg/ml PBS) was added to each well and incubated 4 h at 37°C. Eventually, supernatant of each well was removed again, mixed with 200 µl of DMSO and gently shaken for a while to subsequently keep in dark place.

The cell viability of the treated cells was measured at 570 nm by Stat-Fax 2100 microplate reader (Awareness Technology Inc) and the calculated according to the following equation:

$$\text{Percentage of Viability} = \frac{\text{proportion of sample absorbance}}{\text{control absorbance}}.$$

Apoptosis analysis

For evaluating the apoptosis assay, the flow cytometry technique was used. MDA-MB231 cells were seeded in six-well plates at a density of approximately 120×10^3 cells. Twenty-four hours after seeding, the cells were exposed with IC₅₀ values of *E. szovitsii* extract. The treated cells were harvested after 24 and 48 h, rinsed twice with cold PBS. The pellet (at a concentration of 10^6 cells/ml) resuspended in 500 µl Binding Buffer (1×), and incubated with 5 µl FITC-Annexin V and 5 µl PI. The samples were gently vortexed and incubated for 15 min at room temperature in the dark. About 400 µl of 1× Binding Buffer was added to each tube [5]. One hour after incubation, flow cytometric technique was performed by a flow cytometer (CyFlow, Partec, Munster, Germany). The results were analyzed using FCS Express 5 reader (De Novo Software).

Cell cycle assay

For calculating the content of DNA in various phases of cell cycle, the cells were seeded into six-well plate and treated with IC₅₀ values of *E. szovitsii* extract 24 h after seeding. Cell cycle assay was conducted according to the standard

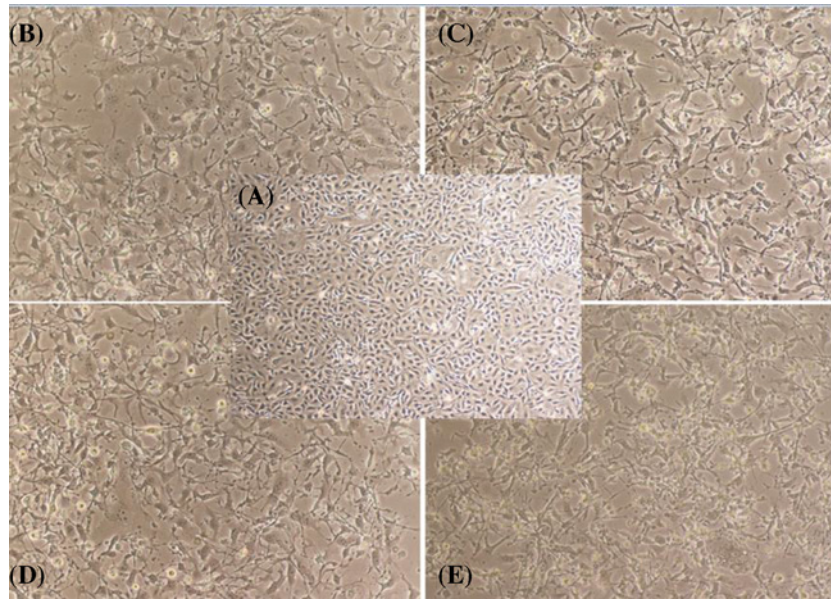


Figure 1. Microscopic photos of triple negative breast cancer cell line (MDA-MB231) treated with the *Euphorbia szovitsii* Fisch. & C.A.Mey. extract

(A) Control cells (none treated cells); (B) Treated by 50 µg/ml of *E. szovitsii* after 24 h; (C) Treated by 50 µg/ml of *E. szovitsii* after 48 h; (D) Treated by 100 µg/ml of *E. szovitsii* after 24 h; (E) Treated by 100 µg/ml of *E. szovitsii* after 48 h.

protocol 24 and 48 h after treatment. Briefly, 5×10^5 treated cells were incubated with 250 µl of trypsin buffer (as Solution A) and 200 µl of trypsin inhibitor with RNase buffer (as Solution B) at 20–25°C for 10 min, respectively. Then, 200 µl of cold PI stain solution (as Solution C) was added and incubated in the dark for 10 min on ice [6]. Finally, the samples were read via a flow cytometer (CyFlow, Partec, Munster, Germany), and data were analyzed through FCS Express 5 reader (De Novo Software).

Statistical analysis

The IC₅₀ values were determined using GraphPad Prism 6.0 software through regression analysis. ANOVA (one-way analysis of variance) was used to compare the data. $P < 0.05$ was considered significant.

Results

E. szovitsii extract indicated cytotoxic effects on MDA-MB231 cells obviously. The extract exhibited cytotoxic effects on breast cancer cell line in a dose-dependent manner (Figure 1). The IC₅₀ values were gained 76.78 (95% CI = 60.75–97.05; $R = 0.8588$) and 59.71 (95% CI = 46.25–77.09; $R = 0.8543$) µg/ml 24 and 48 h after treatment, respectively (Figure 2).

E. szovitsii induced apoptosis in breast cancer cell line

In order to apoptosis evaluation, MDA-MB231 cells were treated with 50 (as minimum concentration of IC₅₀ value) and 100 µg/ml (as maximum concentration of IC₅₀ value) of *E. szovitsii* extract. Flow cytometry technique via FITC Annexin V Apoptosis Detection Kit II was used to determine necrotic and apoptotic cells. In this method, Annexin V-FITC positive and PI negative cells were considered as early apoptotic cells (Q₄); Annexin V-FITC positive and PI positive cells were considered as late apoptotic cells (Q₂); and Annexin V-FITC negative and PI positive cells were considered as necrotic cells (Q₁) (Figure 3).

Sum of early apoptotic cells and late apoptotic cells was calculated as the rate of apoptosis. The results indicated an increase in apoptotic cells in 24 and 48 h after treatment via IC₅₀ values of the *E. szovitsii* extract (Figure 4).

E. szovitsii arrested cell cycle in breast cancer cell line

DNA content was analyzed in different phases of the cell cycle and percentage of the cells in any phases was compared with the control groups (Figure 5). Treatment of breast cancer cell line with *E. szovitsii* extract caused an increase

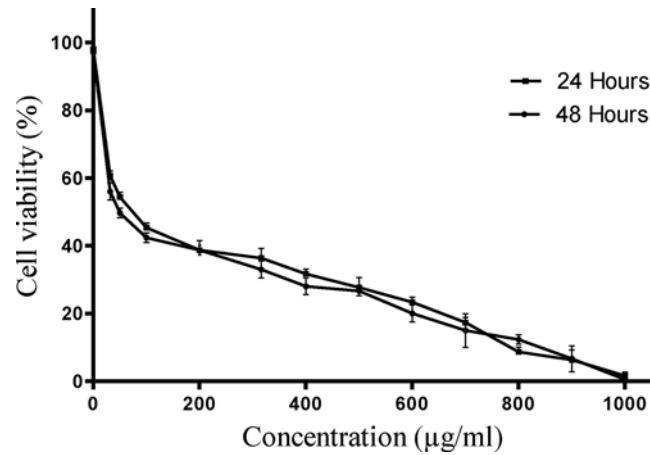


Figure 2. Cell viability evaluation of triple negative breast cancer cell line (MDA-MB231) treated with the *Euphorbia szovitsii* Fisch. & C.A.Mey. hydroalcoholic extract

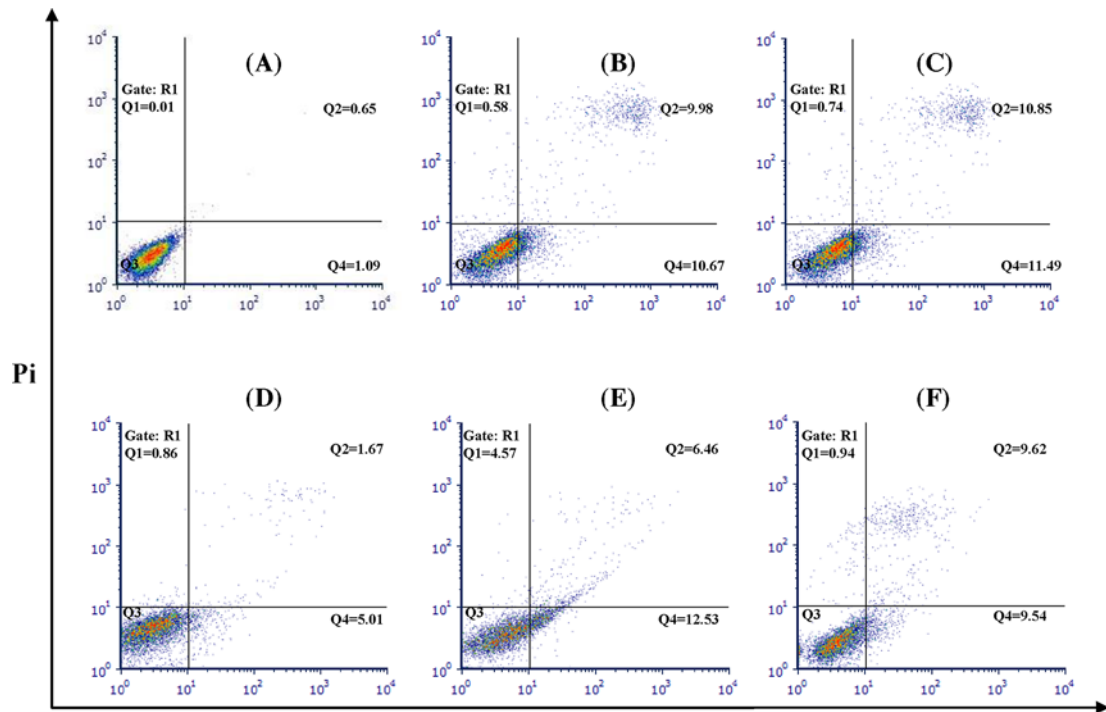


Figure 3. *Euphorbia szovitsii* Fisch. & C.A.Mey. hydroalcoholic extract induces apoptosis in the MDA-MB231 cells (A) Control cells (none treated cells) after 24 h; (B) Treated by 50 µg/ml of *E. szovitsii* after 24 h; (C) Treated by 100 µg/ml of *E. szovitsii* after 24 h; (D) Control cells (none treated cells) after 48 h; (E) Treated by 50 µg/ml of *E. szovitsii* after 48 h; (F) Treated by 100 µg/ml of *E. szovitsii* after 48 h. Q4: early apoptotic cells (Annexin V-FITC positive, PI negative); Q2: late apoptotic cells (Annexin V-FITC positive, PI positive); Q1: necrotic cells (Annexin V-FITC negative, PI positive).

in the percentage of the cells at the G1 phase; whereas a decrease was seen in the cell population at the S phase. G2 phase indicated a decrease until 48 h, but after 48 h it indicated an increase in proportion compared with the control cells. The cells treated with 50 and 100 µg/ml of *E. szovitsii* after 48 h showed a decrease in proportion of the cells in G2/M (Table 1). Percentage of the cells in different phases of the cell cycle in treated cells was significantly different from them in the control group ($P < 0.05$).

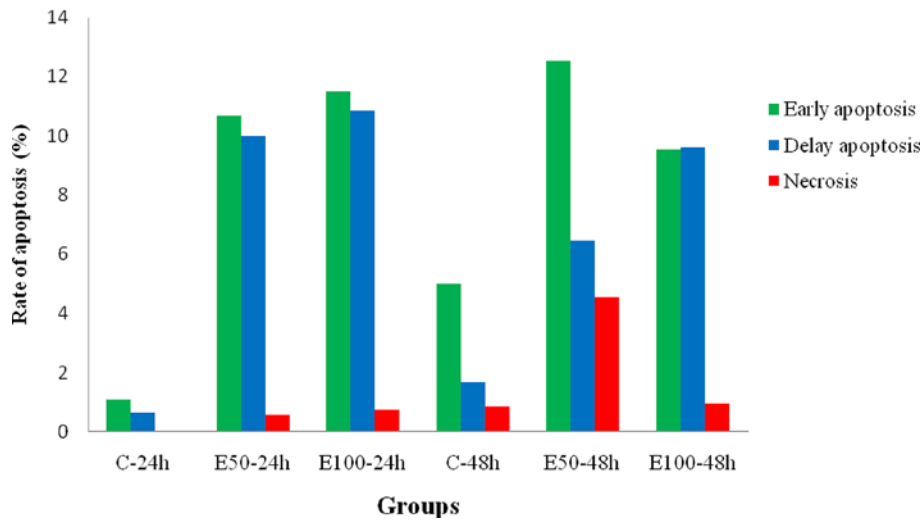


Figure 4. The rate of apoptosis in treated MDA-MB231 cells with *Euphorbia szovitsii* Fisch. & C.A.Mey. hydroalcoholic extract

C: Control; E50: *E. szovitsii* with 50 µg/ml concentration; E100: *E. szovitsii* with 100 µg/ml concentration.

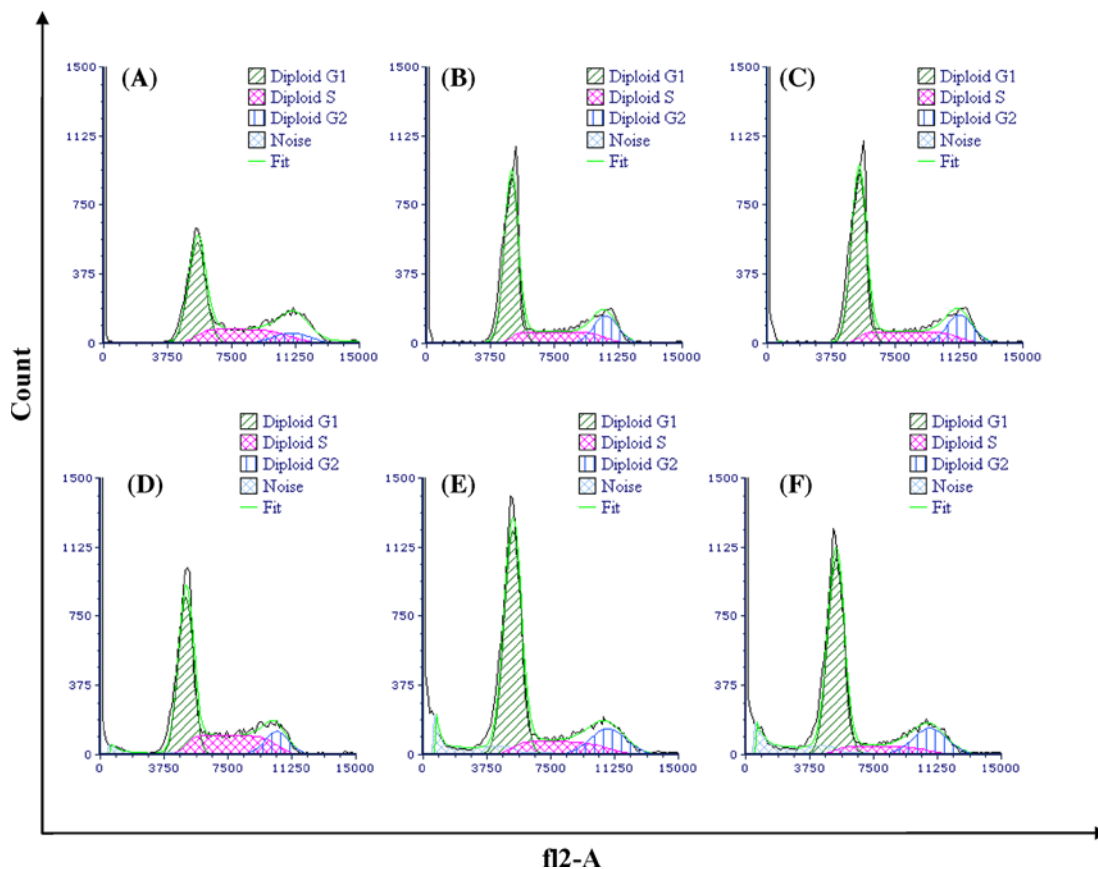


Figure 5. *Euphorbia szovitsii* Fisch. & C.A.Mey. hydroalcoholic extract arrest cell cycle in the MDA-MB231 cells

(A) Control cells (none treated cells) after 24 h; (B) Treated by 50 µg/ml of *E. szovitsii* after 24 h; (C) Treated by 100 µg/ml of *E. szovitsii* after 24 h; (D) Control cells (none treated cells) after 48 h; (E) Treated by 50 µg/ml of *E. szovitsii* after 48 h; (F) Treated by 100 µg/ml of *E. szovitsii* after 48 h.

Table 1 Percentage of the MDA-MB231 cells treated with *Euphorbia szovitsii* Fisch. & C.A.Mey. hydroalcoholic extract in different phases of the cell cycle

Groups		G1 (%)	S (%)	G2 (%)	G2/G1
24 h	Control	43.23	39.06	17.71	1.92
	E50	58.25	30.01	11.74	1.91
	E100	62.09	22.78	15.14	1.93
48 h	Control	54.35	36.32	9.33	1.98
	E50	67.58	18.89	13.54	1.92
	E100	69.18	13.38	17.44	1.89

E50, *E. szovitsii* with 50 µg/ml concentration; E100, *E. szovitsii* with 100 µg/ml concentration.

Discussion

In present study that designed to evaluate the anticancer effects of *E. szovitsii* on the MDA-MB-231 cells and to determine the underlying mechanism of its anticancer effects, the studied plant could induce apoptosis and arrest cell cycle in the breast cancer cell line.

Today, one of the interesting strategies that has been considered in cancer chemotherapy is drug interventions that can mediate the death of malignant cells by inducing apoptosis. In the present study, the extract of *E. szovitsii* both higher and lower than IC50 concentrations, was able to kill the cancer cells by inducing apoptosis. The plant was able to exhibit its apoptotic effect even after 24 h, and there was no significant difference in apoptosis between 24 and 48 h after treatment. So far, many medicinal plants and compounds have been observed to show anticancer effects by inducing apoptosis. Although many plants are able to induce apoptosis, in some studies, the extracts have been observed to induce death through the necrosis pathway, which limits their use to some extent. In addition, most of the plants evaluated in the previous studies have shown greater apoptotic effects after 48 h [7–11]. Based on the results of the present and previous studies, this plant may be considered as one of the potential anticancer plants due to its anti-apoptotic effects after 24 h, as well as the low rate of necrosis induction.

In cancer cells, the regulation of the cell cycle control points was disturbed, resulting in a decrease in the percentage of cells, in particular the cells present in the G1/G0 phase, and the percentage of the cells present in the S phase [12]. In our study, the anticancer effect of the extract on cell cycle phases may suggest that the extract at both lower and higher than IC50 levels can arrest the cell cycle in the G1 phase and also decrease the amount of cells in the S phase. In the study of Choene et al., the growth inhibiting effects of the *E. turicalli* extract on different breast cell lines including MDA-MB 231 and MCF-7 were investigated. The plant extract exhibited growth inhibiting effects in cell type- and concentration-dependent manner after 48 h and arrested the cell cycle in the G0/G1 phase due to excessive expression of p21 [13]. Studies have shown plants that are selectively able to arrest the cell cycle in a particular phase can be a good choice for anticancer therapies, and compounds that arrest the cell cycle during the G1/S transitional phase are typically nucleotide synthesis inhibitors [14]. These results indicate that the plant extract, as a nucleotide synthesis inhibitor, can be a good choice to develop anticancer drugs especially to treat breast cancer. In the study of Choene and Motadi, various types of secondary metabolites including flavonoids and terpenes in *E. tirucalli* were reported, and the anticancer effects of this plant were attributed to these compounds [13].

In Iran, Zare et al. investigated the chemical composition of another species of the Euphorbia genus, namely, *E. macrostegia*, and observed that the plant had a wide range of active compounds, including terpanes and unsaturated fatty acids, which can have anticancer effects [15]. Specifically, the anticancer effects of other compounds such as jolkinolide B, euphoscopin, euphohelioscopin, euphornin A, helioscopinolide, steroids and triterpenes obtained from different species of the Euphorbia genus have been studied on various breast cancer cells and their positive effects have been confirmed [16–19]. The results of the present and previous studies indicate that the species of the Euphorbia genus may be able to exert anticancer effects due to the presence of terpenoid compounds.

Conclusion

E. szovitsii indicated anti-breast cancer effects with visible morphological changes on the MDA-MB231 cell line. The extract could induce apoptosis and cell cycle arrest in the MDA-MB-231 cell line. We believe that *E. szovitsii* extract can be considered as a proper candidate for cancer therapy. It should be evaluated in *in vivo* studies and human clinical trials for producing an anti-breast cancer drug.

Acknowledgements

We also thank all who contribute, in some way, to conducting this research.

Author Contribution

M.R.-K., Z.L. and H.S. designed the experiments. M.A.-S. and Z.L. performed the experiments. M.A.S. wrote the manuscript. All authors read and approved the final manuscript.

Competing Interests

The authors declare that there are no competing interests associated with the manuscript.

Funding

This work was funded by Deputy of Research and Technology of Shahrekord University of Medical Sciences (Grant no. 2420; Ethical code: IR.SKUMS.REC.1396.19).

Abbreviations

C, Control; E., Euphorbia; E50, E. szovitsii Fisch. & C.A.Mey. with 50 µg/ml concentration; E100, E. szovitsii Fisch. & C.A.Mey. with 100 µg/ml concentration; RT, room temperature.

References

- 1 Ferlay, J., Soerjomataram, I., Ervik, M., Dikshit, R., Eser, S. and Mathers, C. (2013) 2015. *GLOBOCAN 2012 v1. 0, Cancer Incidence and Mortality Worldwide: IARC CancerBase No. 11*, International Agency for Research on Cancer, Lyon, France
- 2 Ghoncheh, M., Pournamdar, Z. and Salehiniya, H. (2016) Incidence and mortality and epidemiology of breast cancer in the world. *Asian Pac. J. Cancer Prev.* **17**, 43–46, <https://doi.org/10.7314/APJCP.2016.17.S3.43>
- 3 Asadi-Samani, M., Kooti, W., Aslani, E. and Shirzad, H. (2016) A systematic review of iran's medicinal plants with anticancer effects. *J. Evid. Based Complement. Altern. Med.* **21**, 143–153, <https://doi.org/10.1177/2156587215600873>
- 4 Kooti, W., Servatyari, K., Behzadifar, M., Asadi-Samani, M., Sadeghi, F., Nouri, B. et al. (2017) Effective medicinal plant in cancer treatment, part 2: review study. *J. Evid. Based Complement. Altern. Med.* **22**, 982–995, <https://doi.org/10.1177/2156587217696927>
- 5 Ventura, R., Mordec, K., Waszczuk, J., Wang, Z., Lai, J., Fridlib, M. et al. (2015) Inhibition of de novo palmitate synthesis by fatty acid synthase induces apoptosis in tumor cells by remodeling cell membranes, inhibiting signaling pathways, and reprogramming gene expression. *EBioMedicine* **2**, 808–824, <https://doi.org/10.1016/j.ebiom.2015.06.020>
- 6 Duan, C., Zhang, B., Deng, C., Cao, Y., Zhou, F., Wu, L. et al. (2016) Piperlongumine induces gastric cancer cell apoptosis and G2/M cell cycle arrest both in vitro and in vivo. *Tumour Biol.* **37**, 10793–10804, <https://doi.org/10.1007/s13277-016-4792-9>
- 7 Mohammadi, A., Mansoori, B., Goldar, S., Shanehbandi, D., Khaze, V., Mohammadnejad, L. et al. (2016) Effects of *Urtica dioica* dichloromethane extract on cell apoptosis and related gene expression in human breast cancer cell line (MDA-MB-468). *Cell. Mol. Biol. (Noisy-le-grand)* **62**, 62–67
- 8 Mohammadi, A., Mansoori, B., Aghapour, M., Baradaran, P.C., Shajari, N., Davudian, S. et al. (2016) The herbal medicine *urtica dioica* inhibits proliferation of colorectal cancer cell line by inducing apoptosis and arrest at the G2/M phase. *J. Gastrointest. Cancer* **47**, 187–195, <https://doi.org/10.1007/s12029-016-9819-3>
- 9 Mohammadi, A., Mansoori, B., Aghapour, M. and Baradaran, B. (2016) *Urtica dioica* dichloromethane extract induce apoptosis from intrinsic pathway on human prostate cancer cells (PC3). *Cell. Mol. Biol. (Noisy-le-grand)* **62**, 78–83
- 10 Yang, G.Y., Liao, J., Kim, K., Yurkow, E.J. and Yang, C.S. (1998) Inhibition of growth and induction of apoptosis in human cancer cell lines by tea polyphenols. *Carcinogenesis* **19**, 611–616, <https://doi.org/10.1093/carcin/19.4.611>
- 11 Clement, M.V., Hirpara, J.L., Chawdhury, S.H. and Pervaiz, S. (1998) Chemopreventive agent resveratrol, a natural product derived from grapes, triggers CD95 signaling-dependent apoptosis in human tumor cells. *Blood* **92**, 996–1002
- 12 Yazdanparast, R. and Sadeghi, H. (2004) Nucleic acid synthesis in cancerous cells under the effect of gnidilatimonein from *Daphne mucronata*. *Life Sci.* **74**, 1869–1876, <https://doi.org/10.1016/j.lfs.2003.08.039>
- 13 Choene, M. and Motadi, L. (2016) Validation of the antiproliferative effects of euphorbia tirucalli extracts in breast cancer cell lines. *Mol. Biol. (Mosk)* **50**, 115–127, <https://doi.org/10.1134/S0026893316010040>
- 14 Owa, T., Yoshino, H., Okauchi, T., Yoshimatsu, K., Ozawa, Y., Sugi, N.H. et al. (1999) Discovery of novel antitumor sulfonamides targeting G1 phase of the cell cycle. *J. Med. Chem.* **42**, 3789–3799, <https://doi.org/10.1021/jm9902638>
- 15 Zare, S., Ghaedi, M., Miri, R., Heiling, S., Asadollahi, M., T Baldwin, I et al. (2015) Phytochemical Investigation on *Euphorbia macrostegia* (Persian wood spurge). *Iran J. Pharm. Res.* **14**, 243–249
- 16 Sun, C., Cui, H., Yang, H., Du, X., Yue, L., Liu, J. et al. (2015) Anti-metastatic effect of jolkinolide B and the mechanism of activity in breast cancer MDA-MB-231 cells. *Oncol. Lett.* **10**, 1117–1122, <https://doi.org/10.3892/ol.2015.3310>
- 17 Mu, S.Z., Shang, S., Yan, C., Yang, F.M. and Hao, X.J. (2013) Study on chemical constituents of *Euphorbia helioscopia* and their antitumor activities. *Zhong Yao Cai* **36**, 1092–1096

- 18 Aghaei, M., Yazdiniapour, Z., Ghanadian, M., Zolfaghari, B., Lanzotti, V. and Mirsafaei, V. (2016) Obtusifoliol related steroids from *Euphorbia sogdiana* with cell growth inhibitory activity and apoptotic effects on breast cancer cells (MCF-7 and MDA-MB231). *Steroids* **115**, 90–97, <https://doi.org/10.1016/j.steroids.2016.07.008>
- 19 Ragasa, C.Y. and Cornelio, K.B. (2013) Triterpenes from *Euphorbia hirta* and their cytotoxicity. *Chin. J. Nat. Med.* **11**, 528–533