

Review Article

Maternal obesity increases the risk of metabolic disease and impacts renal health in offspring

Sarah J. Glastras^{1,2}, Hui Chen³, Carol A. Pollock¹ and Sonia Saad¹

¹Department of Medicine, Kolling Institute, University of Sydney, Sydney, Australia; ²Department of Diabetes, Endocrinology and Metabolism, Royal North Shore Hospital, St Leonards, NSW 2065, Australia; ³School of Life Sciences, Faculty of Science, University of Technology Sydney, Australia

Correspondence: Sarah J. Glastras (sarah.glastras@sydney.edu.au)



Obesity, together with insulin resistance, promotes multiple metabolic abnormalities and is strongly associated with an increased risk of chronic disease including type 2 diabetes (T2D), hypertension, cardiovascular disease, non-alcoholic fatty liver disease (NAFLD) and chronic kidney disease (CKD). The incidence of obesity continues to rise in astronomical proportions throughout the world and affects all the different stages of the lifespan. Importantly, the proportion of women of reproductive age who are overweight or obese is increasing at an alarming rate and has potential ramifications for offspring health and disease risk. Evidence suggests a strong link between the intrauterine environment and disease programming. The current review will describe the importance of the intrauterine environment in the development of metabolic disease, including kidney disease. It will detail the known mechanisms of fetal programming, including the role of epigenetic modulation. The evidence for the role of maternal obesity in the developmental programming of CKD is derived mostly from our rodent models which will be described. The clinical implication of such findings will also be discussed.

Introduction

Obesity affects almost one quarter of the adult population and is increasing rapidly amongst young women globally, with 30–50% of women of childbearing age falling within the spectrum of being overweight to obese [1–3]. The significant increase in maternal obesity over the last decade has had ramifications for all aspects of female reproductive health, with maternal adiposity strongly associated with an increased risk of almost all maternal and fetal complications. Although genetic predisposition and postnatal environment are key features for the development of chronic disease, there appears to be a critical window during gestation which influences the long-term risk unaccounted for by genetic tendency and postnatal environment alone.

Maternal obesity has lasting effects on the long-term health of offspring. Evidence from both human and animal studies suggests that maternal obesity ‘programs’ the offspring toward obesity, hyperglycemia, diabetes, and hypertension, all key features of the metabolic syndrome [4,5]. This observation evokes the concept of the developmental origins of health and disease; a concept first explored by Barker and Martyn, which suggests that chronic disease may be influenced by *in utero* exposure to the maternal milieu [6]. There is substantial evidence that maternal obesity increases risk of diabetes, obesity, hypertension, cardiovascular disease, and even premature death in adult offspring [7–10]. The effect of maternal obesity on the risk of chronic kidney disease (CKD) in offspring is much less understood.

The current review will discuss the evidence for the role of maternal obesity in the developmental programming of chronic metabolic disease in offspring, particularly focussing on the role of fetal programming in the development of CKD. The mechanisms of fetal programming, as it may relate to CKD, will be reviewed highlighting the role of inflammation, oxidative stress, and epigenetic changes. The avenues for future research will be discussed.

Received: 07 December 2017
Revised: 17 February 2018
Accepted: 26 February 2018

Accepted Manuscript Online:
26 February 2018
Version of Record published:
29 March 2018

Maternal obesity programs metabolic disease in offspring

When an unborn fetus is exposed to the intrauterine environment associated with maternal obesity, it has lasting effects on the offspring's long-term metabolic health, independent of genetic predisposition and postnatal environmental factors [7,8,11-17]. Both human observational studies and animal models of maternal obesity have contributed to our understanding of the role of fetal programming in chronic disease risk. Specifically, epidemiological studies have shown that offspring born to obese mothers are at an increased risk of obesity, type 2 diabetes (T2D), cardiovascular disease, and non-alcoholic fatty liver disease (NAFLD) (Table 1). A large, retrospective cohort study of over 100,000 person years found that offspring of obese mothers (body mass index (BMI) >30) had a 35% increased mortality, mostly due to cardiovascular death, compared to offspring of normal weight mothers [7]. Using a similar experimental design, Eriksson et al. [14] also found that higher maternal BMI was strongly associated with an increased risk of cardiovascular and cerebrovascular diseases, both coronary heart disease and stroke. There are currently no observational studies that specifically examine the effect of maternal obesity on offspring's long-term kidney health.

The aforementioned studies mostly employ observational, epidemiological designs, inherently subject to differences in selection methods, measurement of study variables, design-specific sources of bias, control of confounding variables and statistical analyses [19]. For example, many studies have used self-reported pre-pregnancy BMI rather than directly measuring BMI, and some studies did not have additional measurements of body weight during pregnancy. Breastfeeding is infrequently identified as a confounding factor though it is known to be less common in obese women and is well known to protect offspring against risk of adult obesity and T2D [20-24]. Animal studies allow controlled experimental design and can induce a specific maternal perturbation to determine its influence on offspring's long-term health. Many animal studies have utilized dietary manipulation in rodent models to examine the effects of maternal obesity on the offspring. Table 2 summarizes some examples of long-term studies using various species to model maternal obesity. These studies have overwhelmingly supported the concept that maternal obesity programs the development of metabolic disease in adult and even aged offspring, and that maternal obesity compounds the effect of diet-induced obesity in adulthood. Rodents, rabbits, guinea pigs, sheep, and non-human primates have been used to model maternal obesity and determine its effects on offspring's health. The largest meta-analysis including 53 rodent studies confirmed that maternal obesity is associated with significantly higher body weight in offspring post weaning [25].

The role of maternal obesity in CKD risk in offspring

A limitation of the existing data regarding the effects of maternal obesity on metabolic health is that few studies, both in humans and animal models, have specifically examined the effect of maternal obesity on renal health in offspring. Several human studies have shown that offspring born to diabetic mothers are at increased risk of hypertension, hyperfiltration, and CKD [39]. A longitudinal study of over 5000 births found that overweight and obesity in early infancy are associated with increased risk of CKD in adulthood [40]. A large population-based, case-control study with 1994 patients with childhood CKD (<21 years of age at diagnosis) confirmed that maternal overweight and obesity were associated with a significantly increased risk of CKD in these young children (24 and 26% increased risk, respectively compared with the controls) [41]. Low birth weight, gestational diabetes, and maternal overweight/obesity were significantly associated with obstructive uropathy in children [41]. These clinical studies are suggestive that maternal obesity can negatively impact renal development and increase risk of CKD in later life.

Utilizing rodent models of maternal obesity, research within our laboratory has established that maternal obesity is a significant risk factor for the future development of CKD in offspring. In rodent models of maternal obesity utilizing high-fat diet (HFD) feeding (20 kJ/g, 43% fat, 21% protein, 36% carbohydrate) during gestation and lactation, we have demonstrated that offspring of obese mothers have increased fat deposition, insulin resistance, and impaired glucose tolerance together with increased albuminuria and renal pathology [42-46]. The kidneys of offspring of obese compared with lean mothers examined at Day 20, Week 9 and through to Week 32 showed persistent evidence of inflammation, oxidative stress, and fibrosis. Interestingly, postnatal feeding of HFD in offspring augmented the deleterious renal effects of maternal obesity, confirming the negative impact of persistent high calorie diet. Moreover, offspring of obese mothers were more prone to renal damage after an additional insult, such as streptozotocin-induced diabetes, suggesting maternal obesity may be an initial insult in a 'two-hit' model of disease. However, diet-induced HFD-feeding in offspring remained a very powerful means of inducing weight gain, glucose intolerance, albuminuria, and renal damage, which overpowers the effect of maternal obesity by postnatal week 32 [46]. Our results highlight that intrauterine exposure to maternal obesity predispose offspring toward CKD and implicates fetal exposure to maternal obesity as a significant risk factor for CKD.

Table 1 Summary of epidemiological studies assessing the effect of maternal obesity on offspring risk of chronic disease

Study name	Year of publishing	Country	Study design	Sample size	Outcome of interest	Main findings	Adjusted variables	P-value	Level of evidence
Obesity in adulthood									
Eriksson et al. [11]	2015	Denmark	Retrospective cohort	2003	Adult BMI (mean age: 62 years)	Higher maternal BMI was associated with significantly higher BMI in offspring	Current age	$P=0.002$	III-3
Schack-Nielsen et al. [12]	2010	Denmark	Retrospective cohort	1540	Adult BMI (mean age: 42 years)	Higher gestational weight gain was associated with significantly higher BMI in offspring	Sex, maternal age/pre-pregnancy, BMI, parental social status, education/single-mother status, prematurity, birth weight, and smoking	$P=0.003$	III-2
Laitinen et al. [13]	2001	Finland	Retrospective cohort	6280	Adult BMI (mean age: 31 years)	Offspring overweight/obesity was more common if the mother was overweight/obese during pregnancy, BMI at the age of 31 correlated with BMI at the age of 14	N/a	$P<0.001$	III-3
Cardiovascular disease in adulthood									
Eriksson et al. [14]	2014	Finland	Retrospective hospital archive medication register	13345	Cardiovascular disease (coronary heart disease and stroke)	Higher maternal BMI was associated with increased risk of cardiovascular disease; as well as coronary heart disease and stroke in offspring when analyzed separately ($P=0.003$ and $P=0.04$, respectively)	Childhood socioeconomic status, adult socioeconomic status, income, education, sex, and year of birth	$P=0.002$	
Reynolds et al. [7]	2013	Scotland	Retrospective cohort	37709	All-cause mortality	Offspring of obese mothers had a 35% higher risk of mortality compared with offspring of mothers of normal weight. Offspring of obese mothers had an increased risk of cardiac-related hospitalization	Maternal age at delivery, socioeconomic status, offspring sex, birth weight, gestation at delivery, and gestation at measurement of BMI	HR: 1.17–1.55	III-2
Forsen et al. [8]	1997	Denmark	Retrospective cohort	3300 (men only)	Death from coronary heart disease (ICD)	Higher maternal BMI was associated with increased risk of death from cardiovascular disease	N/a	$P=0.008$	III-3
T2D in adulthood									
Eriksson et al. [14]	2014	Finland	Retrospective hospital archive/medication register	13345	T2D (as determined by use of antidiabetic medications)	The risk of T2D was increased with higher maternal BMI; the association was stronger in women	Childhood and adult socioeconomic status, income, education, sex, and year of birth	$P=0.004$	III-3
NAFLD									
Patel et al. [15]	2016	U.K.	Prospective pregnancy cohort	1581	NAFLD as determined by liver ultrasound at the age of 17–18 years	Maternal overweight/obesity and pre-pregnancy BMI were associated with greater odds of NAFLD in offspring, even when adjusting for confounders (lost significance when adjusted for neonatal offspring adiposity)	Age at assessment, gender, maternal age at delivery, parity, maternal pre-pregnancy alcohol intake, household social class, birth weight	$P<0.05$	III-2

This table highlights major studies that have identified the significant influence of maternal obesity on chronic disease risk. Level of evidence is derived from NHMRC levels of evidence where level I evidence is a systematic review of level II evidence, II is a randomized controlled trial, III is a comparative study; -2 concurrent controls, -3 historical controls or two single arm studies [18].

Table 2 Metabolic sequelae of maternal obesity in animal models

Study	Year	Species/strain	Maternal diet (fat %)	Comparator group	Age of offspring	Main findings
Ramirez-Lopez et al. [26]	2015	Wistar rat	Cafeteria (<i>ad libitum</i>)	Offspring of chow-fed mothers	Week 20	Male offspring from obese mothers showed significantly greater abdominal fat than control offspring although no significant difference in body weight between the groups was found.
Srinivasan et al. [27]	2006	SD rat	HFD (60%)	Offspring of chow-fed mothers	Day 60	Offspring of HFD-fed mothers had increased glucose, free fatty acids, triglycerides, and glucose intolerance.
Rajia et al. [28]	2010	SD rat	HFD (60%)	Offspring of chow-fed mothers	Week 21	HFD-fed offspring of HFD-fed mothers had increased body weight, fat mass, and glucose intolerance with increased insulin, leptin, insulin resistance, and hyperphagia compared with offspring of chow-fed mothers.
Chen et al. [29]	2014	SD rat	HFD (60%)	Offspring of chow-fed mothers, offspring fed chow compared with HFD	Week 9	Offspring of HFD-fed mothers had increased adiposity, hyperinsulinemia, hyperlipidemia, and insulin resistance.
Buckley et al. [30]	2005	Rat	HFD (59%)	Offspring of chow-fed mothers	3 months	Only offspring of HFD-fed mothers who were fed HFD had impaired glucose tolerance, and not those fed chow. Offspring of HFD-fed mothers had increased proportions of both total body fat and abdominal fat, hyperinsulinemia on oral glucose tolerance test at 15 min and elevated liver triglyceride content. Insulin signaling protein expression levels in the offspring of HFD-fed mothers were consistent with reduced hepatic insulin sensitivity.
Bayol et al. [31]	2007	Rat	Cafeteria	Offspring of chow-fed mothers	Week 10	Offspring of junk food-fed mothers exhibited increased body weight and BMI compared with all other offspring
Blackmore et al. [32]	2014	SD rat	High fat and sugar (20%)	Offspring of chow-fed mothers	Week 12	Although offspring of high fat/high sugar mothers had the same body weight and adiposity as offspring of chow-fed mothers, their heart mass was greater, ventricular volumes were increased, and there was increased ventricular wall thickening.
Samuelsson et al. [33]	2008	C57BL/6 mouse	Obesogenic diet (16% fat/33% sugar)	Offspring of chow-fed mothers	3 and 6 months of age	At 6 months, offspring of obese mothers were heavier, with increased adiposity, endothelial dysfunction, hypertensive, and significantly reduced skeletal muscle mass. Fasting insulin was raised at 3 months and by 6 months fasting glucose was elevated
King et al. [34]	2014	C57BL/6	Cafeteria (58% fat/25% sugar)	Offspring of chow-fed mothers	3 and 6 months of age	At 3 months: post-weaning exposure to cafeteria diet increased glucose, insulin, and cholesterol in males; increased plasma insulin and cholesterol in females and increased HOMA-IR in both sexes. There was an additive effect of maternal overnutrition to increase insulin levels in males. At 6 months: no additional effect of maternal overnutrition was seen.
Castaneda-Gutierrez et al. [35]	2011	Guinea pig	HFD (40%)	Offspring of chow-fed mothers	Day 136	Feeding a HFD during pregnancy induced a 3% increase in body fat in the neonates without change in birth weight. A maternal HFD increased the offspring's adiposity at 2 and 21 days but had no effect on body composition later in life.
Long et al. [36]	2010	Sheep	150% nutrient requirements (obeseogenic diet)	Offspring of chow-fed mothers	2 years old	Fasting glucose was greater; glucose effectiveness and insulin sensitivity were lower in offspring from obese compared with control ewes. During a feeding challenge, offspring from obese ewes consumed approximately 10% more food and tended to have greater weight gain. Their percentage of body fat was greater
McCurdy et al. [37]	2009	<i>Macaca fuscata</i>	HFD (32%)	Offspring who were switched to normal diet (15% fat) at age 5 years	Age: 15 years	Chronic maternal HFD consumption, independent of maternal obesity, or diabetes, significantly increased the risk of NAFLD in the developing fetus that persisted into the postnatal period.
Rivera et al. [38]	2015	<i>Macaca fuscata</i>	HFD (37%)	Offspring of normal diet (15% fat)	13 months	Maternal obesity (defined as > 15.8% body fat) but not maternal HFD consumption alone was associated with increased body weight. Offspring from HFD-obese mothers overconsumed high-fat/sucrose relative to control offspring demonstrating a preference for palatable HFD food.

This table demonstrates that maternal obesity is implicated in metabolic dysfunction utilizing a variety of species/strains and different offspring ages. It does not intend to provide an exhaustive list of all studies completed on the topic.

Abbreviation: HFD, high-fat diet. HOMA-IR, homeostasis model assessment of insulin resistance. SD, Sprague-Dawley

Our previous studies established association with respect to maternal obesity and renal effects in offspring, however were not able to demonstrate direct causality. The kidneys of rodent offspring demonstrated deleterious changes including increased markers of oxidative stress, inflammation, and lipid deposition. Changes in blood glucose regulation and blood pressure by maternal obesity or postnatal insults may also have contributed to the renal effects. Indeed, rodent offspring of obese mothers are known to be hypertensive with evidence of endothelial dysfunction [33]. There has been some suggestions that early life exposure to hyperleptinemia may contribute to establishing hypertension in the offspring of obese mothers [47].

Developmental programming of kidney disease in offspring

The influential role of developmental programming in the susceptibility to CKD has received greater attention in the context of nutritional deprivation, tobacco smoking, and gestational diabetes mellitus (GDM), as compared with maternal obesity [48]. The kidney is a highly vascular and metabolically active organ, particularly susceptible to the impact of prenatal insults [49]. Infants born prematurely, prior to 36 weeks of gestation have reduced nephron number and kidney size. Low birth weight, defined as birth weight below 2500 g, represents the postnatal manifestation of fetal growth restriction. Considerable evidence exists for an association between low birth weight and CKD [50-59]. Indeed, a recent meta-analysis found that low birth weight confers approximately 70% increased risk (OR: 1.77) of developing CKD in adult life, compared with normal birth weight [59]. Factors known to increase the likelihood of low birth weight include maternal nutritional deprivation, maternal smoking, placental insufficiency, twin pregnancy, and preterm delivery [48,60-63]. Mothers who smoke tobacco during pregnancy can permanently damage their offspring's kidney health as a result of prematurity and low birth weight [64,65]. This is due to the disruption in delivery of nutrients to the growing fetus that leads to intrauterine growth restriction, which has permanent deleterious effects on renal health in postnatal life [66]. Though often associated with fetal overgrowth, maternal obesity can also conversely be associated with increased risk of premature birth and low birth weight, with implications for renal development and CKD risk [67].

Epigenetic mechanisms are implicated in the development of CKD [68,69]. As compared with genome-wide association studies (GWAS), epigenome-wide association studies (EWAS) have been more fruitful in demonstrating influence of epigenetic changes on CKD risk [70]. The tubuli from patients with CKD demonstrated significant changes in DNA methylation, particularly at enhancers associated with the increased expression of key fibrotic genes [71]. Furthermore, accelerated loss of renal function in patients with known CKD is associated with DNA methylation of genes involved in inflammation, as well as fibrosis [72]. The role of epigenetics is increasingly understood to underpin the relationship between maternal perturbations and renal health in adulthood [73,74]. Much of this work in epigenetics and fetal programming has investigated the effects of intrauterine growth restriction and maternal smoking. There are no studies that have investigated the effect of maternal obesity on epigenetic changes specifically related to development of CKD. This needs to be addressed in future studies.

Mechanisms of fetal programming affecting offspring kidney health

The total number of nephrons within the kidney is important, as each nephron provides a critical filtering function within the kidney. In humans, nephron endowment, defined as the number of nephrons at the start of postnatal life, is an important determinant of adult kidney health [75]. Nephrogenesis is complete by 32-36 weeks in humans and thereafter no new nephrons are formed. The total number of nephrons is correlated with birth weight in humans [51].

In the context of premature delivery or intrauterine growth restriction, nephron endowment is reduced and thus the normal physiological demand becomes overwhelmed leading to hyperfiltration and subsequent glomerular hypertrophy which may ultimately lead to CKD and systemic and intraglomerular hypertension [49,75,76]. The importance of kidney size is evident in neonates with retarded kidney growth during the first 18 months of life, who have increased risk of CKD in adulthood [77]. The underdeveloped kidney in offspring from smoking mothers is at least partially a direct result of the inflammatory and vasoconstrictive actions of nicotine and results in lower nephron endowment in the offspring [78]. Within our laboratory, in a rodent model of maternal smoking maternal smoking has been found to impair mitochondrial function, increase renal levels of reactive oxygen species, and reduce antioxidant defense mechanisms in the kidneys of adult offspring. The appearance of mitochondrial defects preceded the onset of albuminuria at postnatal week 13. Thus, mitochondrial damage caused by maternal smoking may play an important role in development of CKD in adult life [65]. Indeed, maternal smoking is associated with epigenetic changes which have been implicated in the development of CKD as well as cancer, rheumatoid arthritis, and other immune-mediated diseases [79-81].

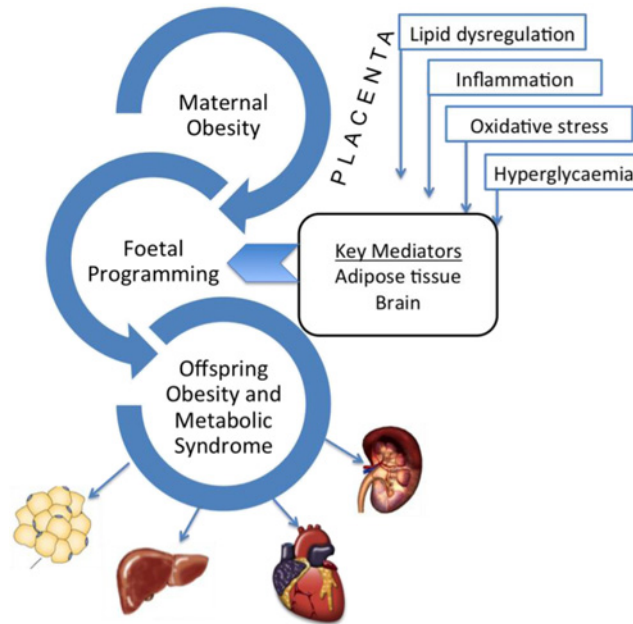


Figure 1. A schematic representation depicting the key players in developmental programming of maternal obesity

The mechanisms underpinning the association between maternal obesity and CKD are less well studied and have been pioneered by our research team. We confirm that inflammation, oxidative stress, and dyslipidemia are the key mechanisms involved in the relationship between maternal obesity and CKD [42-46]. The known mechanisms of developmental programming on chronic disease risk in offspring are depicted in Figure 1 .

Cross-talk amongst adipose tissue, placenta, and fetal kidney development in maternal obesity

Adipose tissue has an important role in metabolic programming

Offspring of obese mothers are predisposed to adiposity, adipocyte hypertrophy, and weight gain in adulthood as a result of up-regulation of adipogenesis and lipogenesis [82]. Visceral adipose tissue is increased (including increased epididymal/periuterine, perirenal, omental, and mesenteric fat deposits), which has been shown to have particularly adverse metabolic consequences to the offspring in relation to insulin resistance and metabolic risk [83]. Key transcription factors involved in adipogenesis and lipogenesis include peroxisome proliferator-activated receptor- γ (PPAR γ), CCAAT/enhancer binding protein, the sterol regulatory element-binding protein 1c as well as fatty acid synthesis enzymes such as fatty acid synthase. All of them are up-regulated in the adipose tissue of offspring of obese mothers [84]. PPAR γ has been shown to be up-regulated in adipose tissue of offspring exposed to maternal obesity both prenatally and up to postnatal day 130 [85,86]. Fatty acid synthase and multiple fatty acid transporters have been shown to be up-regulated in retroperitoneal, omental, mesenteric, and subcutaneous fat deposits. Lipid accumulation, including cholesterol and phospholipid accumulation, within the glomeruli and proximal tubules is known to be associated with CKD [87]. We demonstrated that maternal obesity was associated with reduced renal function and increased fibrosis as measured by renal structural changes and fibronectin; renal inflammation and oxidative stress were up-regulated in the offspring of obese mothers. Table 3 shows the maternal anthropometric characteristics in mothers at the time of weaning, clearly demonstrating that HFD feeding in the mothers induced significant adiposity but not diabetes nor relative hyperglycemia in the offspring.

Adipose tissue produces adipocytokines including adiponectin and leptin which have autocrine, paracrine, and endocrine effects and influence whole-body insulin sensitivity and hence the development of metabolic diseases [88]. Adiponectin promotes insulin sensitivity and has anti-inflammatory properties; decreased circulating levels are associated with obesity, insulin resistance, and T2D [88]. Pregnant obese dams have lower adiponectin levels and similarly offspring of obese mothers also have lower adiponectin levels [89]. In contrast, leptin plays important roles in modulating satiety and energy homeostasis. Although leptin is elevated in offspring of obese mothers, the offspring do not demonstrate reduced food intake suggesting that maternal obesity induces leptin resistance [36]. The mechanism of

Table 3 Maternal anthropometric characteristics of dams at the time of weaning (day 21 postpartum)

Maternal factor	Control	Obese
BW (g)	24.36 ± 0.31	34.23 ± 1.063*
Fasting glucose (mmol/l)	13.50 ± 0.63	15.17 ± 0.73
Kidney/BW (%)	0.73 ± 0.01	0.61 ± 0.02*
Liver/BW (%)	6.04 ± 0.37	6.52 ± 0.26*
Retroperitoneal fat/BW (%)	0.20 ± 0.02	1.29 ± 0.12*
Extrauterine fat/BW (%)	1.36 ± 0.11	5.60 ± 0.52*

Abbreviation: BW, body weight.

* $P < 0.0001$ compared with control. Results are expressed as mean ± S.E.M., $n = 28-30$. Control: chow fed and Obese: HFD fed from 6 weeks prior to mating, throughout pregnancy and lactation.

leptin resistance due to maternal obesity may be permanently programmed by intrauterine overnutrition as a result of alterations in neural circuitry that is similar to that induced by HFD consumption [90].

Adipocytes secrete inflammatory mediators including chemokines and cytokines which lead to both local and systemic inflammation [91]. Excessive lipids that cannot be stored in adipocytes are released into the blood and ectopically deposited in the liver, muscle, and pancreas. At these sites, inflammatory cytokines secreted by adipocytes, cause cellular functional injury. Together these metabolic abnormalities lead to insulin resistance and the predisposition toward metabolic disorders, which may lead to end-organ effects such as cardiovascular disease and CKD [92].

The placenta and programming by maternal obesity

The placenta is the gatekeeper between the maternal and fetal circulation. It modulates the delivery of oxygen and nutrients including glucose, amino acids, free fatty acids, and hormones such as insulin and glucagon, and glucocorticoids from the maternal circulation to the growing fetus. In exchange, the placenta is responsible for transferring carbon dioxide, urea, waste products, and hormones from the fetal circulation to the maternal circulation for clearance. The placenta is now recognized as an integral programming agent for chronic disease in offspring and in particular, placental efficiency is a predictor of disease. Maternal obesity is known to modulate how the placenta forms and functions [93].

In general, placental function relates to how it delivers oxygen and nutrients to the fetus. Placental transport is dependent on a number of factors including placental size and function, maternal nutrient availability, and the stage of gestation [94]. Placental transport of key nutrients is not as simple as concentration gradients from maternal to fetal circulation, although for nutrients such as glucose there is a strong relationship between maternal and fetal glucose levels [95]. Most relevant to the setting of maternal obesity, is the transport of glucose and fats across the placenta.

Diffusion of glucose across the placenta takes place readily and results in increased fetal growth. The insulin-independent glucose transporter (GLUT) 1 (GLUT1) has been identified as the main transporter for glucose in the placenta [95]. In GDM, it has been demonstrated that GLUT1 is up-regulated probably as a result of hormonally driven mechanisms such as increased insulin and insulin-like growth factor-1 (IGF-1). In obese mothers without GDM, GLUT1 expression correlated with birth weight [96]. However, the placental role in transferring glucose from mother to fetus is yet more complex where fetal hyperinsulinemia, in response to fetal hyperglycemia can steepen the glucose gradient, known as glucose steal [97]. This is because hyperinsulinemia in the fetus is likely to accelerate glucose clearance into fetal tissues by increasing fat accumulation predominantly in adipose tissue and in the liver, which will consequently increase the fetal glucose steal. It has been postulated that even in the presence of normal maternal glucose levels, fetal hyperinsulinemia will still lower fetal glucose concentrations, thus a high-glucose gradient and an exaggerated glucose steal are sustained [97]. Furthermore, in the setting of a large maternal–fetal glucose gradient, maternal postprandial glucose peaks may even be blunted further exacerbating the fetal exposure to glucose though masking the phenomenon in the mother.

The placenta is highly permeable to free fatty acids, transfer of which is gradient dependent. In general, the pregnant state is associated with mobilization of lipids, cholesterol, and free fatty acids into the maternal circulation [98]. Lipoprotein metabolism is up-regulated. Maternal lipoproteins do not pass directly across the placenta, rather lipoprotein receptors, lipases, and fatty acid-binding transport proteins within the placenta allow placental uptake of triglycerides and cholesterol and passage to the fetus. In fact, the placenta also has the ability to re-esterify and store lipids for later fetal use [99]. Maternal obesity is associated with even greater increases in maternal lipid mobilization and

triglyceride. Low-density lipoprotein (LDL) and free fatty acids are all increased in obese compared with normal weight pregnant women [98]. In animal models as well as humans, maternal obesity increases the expression of free fatty acid transporters within the placenta, including CD36, fatty acid transport proteins 1 and 4, which are associated with increased circulating lipids in fetal serum [100-104].

Cellular mechanisms of developmental programming affected by maternal obesity

Inflammation

Obesity is associated with chronic low-grade inflammation largely mediated by excess adipose tissue [105]. Increased inflammatory markers are evident in the placentae of obese mothers [93,106,107]. Enhanced placental expression of pro-inflammatory cytokines, and expression of a critical signaling molecule in the inflammatory pathway, Toll-like receptor 4, alongside increased macrophage accumulation has been demonstrated in obese HFD-fed non-human primates [108,109]. Furthermore, cord blood levels of inflammatory markers also are reported to be altered by exposure to an obese mother [110,111]. Dosch et al. [111] found that cord serum levels of key inflammatory cytokines were increased in neonates of obese mothers at cesarean section (BMI >35 at the time of delivery). The mechanisms by which chronic low-grade inflammation influences placental function and how inflammatory mediators are transmitted to offspring and perpetuated to increase chronic disease risk later in life are poorly understood. Of particular interest, is the emerging evidence that maternal obesity may lead to alterations in the maternal DNA methylome which thereby influences placental gene [112].

Oxidative stress

An imbalance between reactive oxygen species and antioxidant defense mechanisms leads to cellular damage via oxidative stress. Markers of oxidative stress have been shown to be increased in the placentae of obese mothers [113]. In a study of overweight and obese Spanish women, reduced placental expression of mammalian target of rapamycin and up-regulation of sirtuin 1 and uncoupled protein 2 were demonstrated. The implication of their altered regulation suggests increased placental oxidative stress, given the known role of these genes in up-regulating cellular antioxidant defense mechanisms [114]. Interestingly, in this study they did not find increased inflammatory cytokines in the cord blood of the neonates exposed to maternal obesity.

Mitochondria are intracellular organelles extensively involved in cellular metabolism and oxidative stress defense as a result of inevitable free radical leakage in the process of cellular respiration. Mitochondrial dysfunction has been demonstrated as early as embryogenesis by maternal obesity [115]. Furthermore, the placentae of obese mothers have higher levels of oxidative stress and impaired mitochondrial respiration in both rodent and human placenta [116-118]. The outcome of increased oxidative stress and dysfunctional repair mechanisms is likely to be impaired placental function, which may thereby lead to unhealthy fetal growth and development.

Changes in epigenetic regulation

Epigenetics is the study of heritable changes in gene expression that are not due to changes in the DNA sequence [119]. Epigenetic modification can occur via DNA methylation, histone modification, or by the influence of miRNA and small non-coding regions of the genome previously regarded as 'junk' though now recognized as important regulators of gene expression itself. DNA methylation typically occurs at CpG dinucleotide sites (regions of DNA where a cytosine nucleotide is followed by a guanine nucleotide) via the action of DNA methyltransferase enzymes. DNA methylation is usually associated with down-regulation or silencing of gene expression via direct methylation at non-CpG sites. Histone modification results in altered compaction of DNA around histones, preventing or enabling gene activation. Changes to histone structure as a result of various processes including acetylation, methylation, ubiquitylation, and phosphorylation lead to chromatin and nucleosome restructure which influences binding of transcription factors which can have numerous effects on gene regulation [119]. There is a complex interplay between epigenetic processes such that coupling between DNA methylation and histone modification increases the complexity of gene regulation. With respect to fetal programming, epigenetic changes are increasingly demonstrated to play an influential role in modulating gene expression which may persist from early life *in utero* through to adulthood.

In human studies, maternal nutrition as early as conception, can modulate DNA methylation of important genes. In a series of elegantly designed experiments taking place in a remote community in the Gambia, maternal nutritional status at the time of conception was shown to alter methylation status of a host of genes in the cord blood of offspring [120-122]. In rural communities in the Gambia, the combination of self-sufficient food source (without external influence) and reliance on stored foods during the rainy season lead to profound annual variations in the

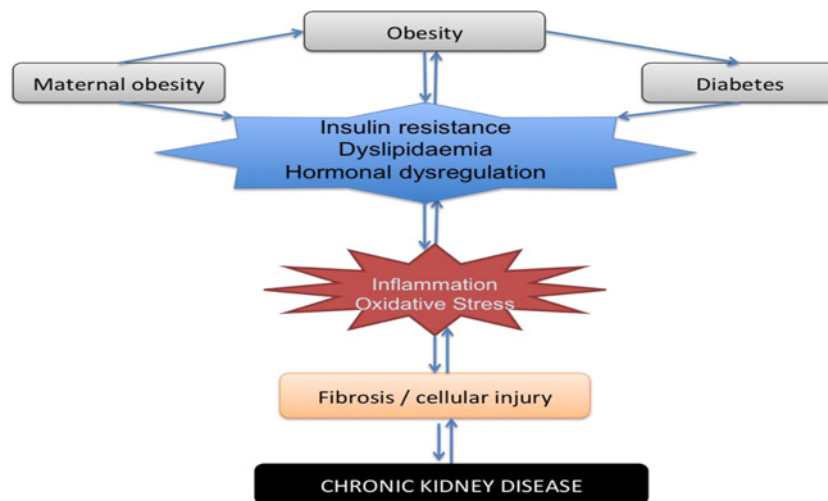


Figure 2. Influencing factors and cellular mechanisms leading to the development of CKD in offspring

intakes of macro- and micronutrients. First, it was established that the season of conception (reflecting variation in the dietary intake and nutritional status of women at the time of conception) significantly influenced the methylation status in multiple genes in children [122]. Second, a randomized, controlled trial where Gambian women were given micronutrient supplementation, determined that particular candidate genes had altered methylation status as a result of the supplement as measured in cord blood of offspring [120]. Thereafter, a large randomized, controlled trial carried out in the Gambian communities demonstrated the powerful effect of periconceptional maternal nutrition on DNA methylation in offspring blood and hair and was predicted by periconceptional maternal plasma concentrations of key micronutrients, such as homocysteine, folate, and B vitamins [120].

A very powerful example of the potential effects of epigenetic modification comes from animal experiments involving the Agouti mouse. The wild-type *Agouti* gene encodes a paracrine-signaling molecule that produces either black or yellow fur [123]. When the *agouti* gene is in its normal methylated state, the coat is brown and the mouse has low risk of metabolic disease. In contrast, if the *agouti* gene is unmethylated, the mouse is yellow-furred and obese with dysregulated metabolism. When pregnant yellow-furred Agouti mice are fed methyl-rich diet, they produce mostly healthy brown-furred offspring. However, if fed methyl-poor diet the offspring are yellow furred and are at increased risk of obesity. In the human studies conducted in the Gambia, interestingly higher maternal BMI was significantly associated with hypomethylation status in the serum of the offspring [121]. To date, it is unclear if epigenetic changes established *in utero* are persistent throughout life or can be modulated by postnatal environmental factors.

Clinical implications

There is firm evidence that maternal obesity influences the development of chronic disease in offspring, and our animal models of maternal obesity have now extended this knowledge to include developmental programming of renal disease. There is considerable evidence related to the pathways of inflammation, oxidative stress, and fibrosis with regard to the pathogenesis of CKD [124,125]. Maternal obesity is an important modulator of these pathways and hence should be considered a contributor to future CKD risk in the offspring (see Figure 2). Further studies are needed to explore the critical components of *in utero* exposure underlying the influence of maternal obesity on renal outcomes, specifically determining the role of hypertension in CKD risk in offspring. The role of epigenetics in modulating the effects of maternal obesity on metabolic disease in offspring is an important area for future research and no doubt will provide explanation for the transgenerational propagation of metabolic disease.

As all-important gatekeeper between the maternal and fetal circulations, the placenta is likely to play a critical role in fetal programming as previously described. An objective for future studies is to determine the role of the placenta in orchestrating the effect of perturbations related to maternal obesity on metabolic programming within the fetal kidney. There are several unanswered questions related to this concept. Are all periods of gestation as important for the deleterious renal effects of maternal obesity? For example, is early gestation most important when placental implantation is occurring or is late gestation more important when final kidney maturation is taking place? Another

question arises: if weight loss occurs prior to conception, will this resolve the negative programming effects of maternal obesity on the renal health of offspring? There is low level of evidence to suggest that this may not be the case and invokes the concept of irreversible epigenetic modifications with the potential to lead to transgenerational propagation of obesity and renal disease [126,127]. Transmission of epigenetic modifications from mother to child may shift the population phenotype, particularly if occurring in the mtDNA.

Specific targets to reduce inflammation and oxidative stress are needed to prevent the harmful effects of maternal obesity on renal health, and other deleterious metabolic effects. Agents safe in pregnancy that can reduce inflammation, oxidative stress, or reverse adverse epigenetic modification, may be useful to prevent developmental programming of maternal obesity impacting on renal health in offspring. Finally, its far-reaching consequences for disease propagation to subsequent generations calls for unity of industry, academia, and public health to come together with policymakers and governments to devise public health strategies to reduce obesity, particularly in women of reproductive age.

Competing interests

The authors declare that there are no competing interests associated with the manuscript.

Funding

This work was supported by the Postgraduate Scholarship from Australian National Health and Medical Research Council [grant number 2013-2016 (to S.J.G.)].

Author contribution

S.J.G. wrote the manuscript. H.C., C.A.P. and S.S. revised and contributed expert opinion to the manuscript.

Abbreviations

BMI, body mass index; CKD, chronic kidney disease; GDM, gestational diabetes mellitus; GLUT, glucose transporter; HFD, high-fat diet; NAFLD, non-alcoholic fatty liver disease; PPAR γ , proliferator-activated receptor- γ ; T2D, type 2 diabetes.

References

- World Health Organization (2000) Obesity: preventing and managing the global epidemic. Report of a WHO consultation. *World Health Organ. Tech. Rep. Ser.* **894**, 1–253
- Flegal, K.M., Carroll, M.D., Ogden, C.L. and Curtin, L.R. (2010) Prevalence and trends in obesity among us adults, 1999–2008. *JAMA* **303**, 235–241, <https://doi.org/10.1001/jama.2009.2014>
- Callaway, L.K., Prins, J.B., Chang, A.M. and McIntyre, H.D. (2006) The prevalence and impact of overweight and obesity in an Australian obstetric population. *Med. J. Aust.* **184**, 56–59
- Catalano, P.M., Presley, L., Minium, J. and Hauguel-de Mouzon, S. (2009) Fetuses of obese mothers develop insulin resistance *in utero*. *Diabetes Care* **32**, 1076–1080, <https://doi.org/10.2337/dc08-2077>
- Filler, G., Rayar, M.S., da Silva, O., Buffo, I., Pepelassis, D. and Sharma, A.P. (2008) Should prevention of chronic kidney disease start before pregnancy? *Int. Urol. Nephrol.* **40**, 483–488, <https://doi.org/10.1007/s11255-007-9328-1>
- Barker, D.J. and Martyn, C.N. (1992) The maternal and fetal origins of cardiovascular disease. *J. Epidemiol. Community Health* **46**, 8–11, <https://doi.org/10.1136/jech.46.1.8>
- Reynolds, R.M., Allan, K.M., Raja, E.A., Bhattacharya, S., McNeill, G., Hannaford, P.C. et al. (2013) Maternal obesity during pregnancy and premature mortality from cardiovascular event in adult offspring: follow-up of 1 323 275 person years. *BMJ* **347**, f4539, <https://doi.org/10.1136/bmj.f4539>
- Forsen, T., Eriksson, J.G., Tuomilehto, J., Teramo, K., Osmond, C. and Barker, D.J. (1997) Mother's weight in pregnancy and coronary heart disease in a cohort of Finnish men: follow up study. *BMJ* **315**, 837–840, <https://doi.org/10.1136/bmj.315.7112.837>
- Fraser, A., Tilling, K., Macdonald-Wallis, C., Sattar, N., Brion, M.J., Benfield, L. et al. (2010) Association of maternal weight gain in pregnancy with offspring obesity and metabolic and vascular traits in childhood. *Circulation* **121**, 2557–2564, <https://doi.org/10.1161/CIRCULATIONAHA.109.906081>
- Lee, K.K., Raja, E.A., Lee, A.J., Bhattacharya, S., Bhattacharya, S., Norman, J.E. et al. (2015) Maternal obesity during pregnancy associates with premature mortality and major cardiovascular events in later life. *Hypertension* **66**, 938–944, <https://doi.org/10.1161/HYPERTENSIONAHA.115.05920>
- Eriksson, J.G., Sandboge, S., Salonen, M., Kajantie, E. and Osmond, C. (2015) Maternal weight in pregnancy and offspring body composition in late adulthood: findings from the Helsinki Birth Cohort Study (HBCS). *Ann. Med.* **47**, 94–99, <https://doi.org/10.3109/07853890.2015.1004360>
- Schack-Nielsen, L., Michaelsen, K.F., Gamborg, M., Mortensen, E.L. and Sorensen, T.I.A. (2009) Gestational weight gain in relation to offspring body mass index and obesity from infancy through adulthood. *Int. J. Obes.* **34**, 67–74, <https://doi.org/10.1038/ijo.2009.206>
- Laitinen, J., Power, C. and Jarvelin, M.R. (2001) Family social class, maternal body mass index, childhood body mass index, and age at menarche as predictors of adult obesity. *Am. J. Clin. Nutr.* **74**, 287–294, <https://doi.org/10.1093/ajcn/74.3.287>
- Eriksson, J.G., Sandboge, S., Salonen, M.K., Kajantie, E. and Osmond, C. (2014) Long-term consequences of maternal overweight in pregnancy on offspring later health: findings from the Helsinki Birth Cohort Study. *Ann. Med.* **46**, 434–438, <https://doi.org/10.3109/07853890.2014.919728>

- 15 Patel, S., Lawlor, D.A., Callaway, M., Macdonald-Wallis, C., Sattar, N. and Fraser, A. (2016) Association of maternal diabetes/glycosuria and pre-pregnancy body mass index with offspring indicators of non-alcoholic fatty liver disease. *BMC Pediatrics* **16**, 47, <https://doi.org/10.1186/s12887-016-0585-y>
- 16 Drake, A.J. and Reynolds, R.M. (2010) Impact of maternal obesity on offspring obesity and cardiometabolic disease risk. *Reproduction* **140**, 387–398, <https://doi.org/10.1530/REP-10-0077>
- 17 Freeman, D.J. (2010) Effects of maternal obesity on fetal growth and body composition: implications for programming and future health. *Semin. Fetal Neonatal Med.* **15**, 113–118, <https://doi.org/10.1016/j.siny.2009.09.001>
- 18 National Health and Medical Research Council (2009) NHMRC levels of evidence and grades for recommendations for developers of guidelines. *Australian Government: NHMRC* 1–23
- 19 Sanderson, S., Tatt, I.D. and Higgins, J.P. (2007) Tools for assessing quality and susceptibility to bias in observational studies in epidemiology: a systematic review and annotated bibliography. *Int. J. Epidemiol.* **36**, 666–676, <https://doi.org/10.1093/ije/dym018>
- 20 Arenz, S., Ruckerl, R., Koletzko, B. and von Kries, R. (2004) Breast-feeding and childhood obesity—a systematic review. *Int. J. Obes. Relat. Metab. Disord.* **28**, 1247–1256, <https://doi.org/10.1038/sj.ijo.0802758>
- 21 Gopinath, B., Subramanian, I., Flood, V.M., Baur, L.A., Pfund, N., Burlutsky, G. et al. (2012) Relationship between breast-feeding and adiposity in infants and pre-school children. *Public Health Nutr.* **15**, 1639–1644, <https://doi.org/10.1017/S1368980011003569>
- 22 Horta, B.L., Loret de Mola, C. and Victora, C.G. (2015) Long-term consequences of breastfeeding on cholesterol, obesity, systolic blood pressure and type 2 diabetes: a systematic review and meta-analysis. *Acta Paediatr.* **104**, 30–37, <https://doi.org/10.1111/apa.13133>
- 23 Li, L., Parsons, T.J. and Power, C. (2003) Breast feeding and obesity in childhood: cross sectional study. *BMJ* **327**, 904–905, <https://doi.org/10.1136/bmj.327.7420.904>
- 24 Owen, C.G., Martin, R.M., Whincup, P.H., Davey-Smith, G., Gillman, M.W. and Cook, D.G. (2005) The effect of breastfeeding on mean body mass index throughout life: a quantitative review of published and unpublished observational evidence. *Am. J. Clin. Nutr.* **82**, 1298–1307, <https://doi.org/10.1093/ajcn/82.6.1298>
- 25 Lagisz, M., Blair, H., Kenyon, P., Uller, T., Raubenheimer, D. and Nakagawa, S. (2015) Little appetite for obesity: meta-analysis of the effects of maternal obesogenic diets on offspring food intake and body mass in rodents. *Int. J. Obes. (Lond.)* **39**, 1669–1678, <https://doi.org/10.1038/ijo.2015.160>
- 26 Ramirez-Lopez, M.T., Vazquez, M., Bindila, L., Lomazzo, E., Hofmann, C., Blanco, R.N. et al. (2015) Exposure to a highly caloric palatable diet during pregestational and gestational periods affects hypothalamic and hippocampal endocannabinoid levels at birth and induces adiposity and anxiety-like behaviors in male rat offspring. *Front. Behav. Neurosci.* **9**, 339
- 27 Srinivasan, M., Aalinker, R., Song, F., Mitrani, P., Pandya, J.D., Strutt, B. et al. (2006) Maternal hyperinsulinemia predisposes rat fetuses for hyperinsulinemia, and adult-onset obesity and maternal mild food restriction reverses this phenotype. *Am. J. Physiol. Endocrinol. Metab.* **290**, E129–E134, <https://doi.org/10.1152/ajpendo.00248.2005>
- 28 Rajia, S., Chen, H. and Morris, M.J. (2010) Maternal overnutrition impacts offspring adiposity and brain appetite markers—modulation by postweaning diet. *J. Neuroendocrinol.* **22**, 905–914
- 29 Chen, H., Simar, D. and Morris, M.J. (2014) Maternal obesity impairs brain glucose metabolism and neural response to hyperglycemia in male rat offspring. *J. Neurochem.* **129**, 297–303, <https://doi.org/10.1111/jnc.12623>
- 30 Buckley, A.J., Keseru, B., Briody, J., Thompson, M., Ozanne, S.E. and Thompson, C.H. (2005) Altered body composition and metabolism in the male offspring of high fat-fed rats. *Metabolism* **54**, 500–507, <https://doi.org/10.1016/j.metabol.2004.11.003>
- 31 Bayol, S.A., Simbi, B.H., Fowkes, R.C. and Stickland, N.C. (2010) A maternal “junk food” diet in pregnancy and lactation promotes nonalcoholic Fatty liver disease in rat offspring. *Endocrinology* **151**, 1451–1461, <https://doi.org/10.1210/en.2009-1192>
- 32 Blackmore, H.L., Niu, Y., Fernandez-Twinn, D.S., Tarry-Adkins, J.L., Giussani, D.A. and Ozanne, S.E. (2014) Maternal diet-induced obesity programs cardiovascular dysfunction in adult male mouse offspring independent of current body weight. *Endocrinology* **155**, 3970–3980, <https://doi.org/10.1210/en.2014-1383>
- 33 Samuelsson, A.M., Matthews, P.A., Argenton, M., Christie, M.R., McConnell, J.M., Jansen, E.H. et al. (2008) Diet-induced obesity in female mice leads to offspring hyperphagia, adiposity, hypertension, and insulin resistance: a novel murine model of developmental programming. *Hypertension* **51**, 383–392, <https://doi.org/10.1161/HYPERTENSIONAHA.107.101477>
- 34 King, V., Norman, J.E., Seckl, J.R. and Drake, A.J. (2014) Post-weaning diet determines metabolic risk in mice exposed to overnutrition in early life. *Reprod. Biol. Endocrinol.* **12**, 73, <https://doi.org/10.1186/1477-7827-12-73>
- 35 Castañeda-Gutiérrez, E., Pouteau, E., Pescia, G., Moulin, J., Aprikian, O. and Macé, K. (2011) The guinea pig as a model for metabolic programming of adiposity. *Am. J. Clin. Nutr.* **94**, 1838S–1845S, <https://doi.org/10.3945/ajcn.110.000794>
- 36 Long, N.M., George, L.A., Uthlaut, A.B., Smith, D.T., Nijland, M.J., Nathanielsz, P.W. et al. (2010) Maternal obesity and increased nutrient intake before and during gestation in the ewe results in altered growth, adiposity, and glucose tolerance in adult offspring. *J. Anim. Sci.* **88**, 3546–3553, <https://doi.org/10.2527/jas.2010-3083>
- 37 McCurdy, C.E., Bishop, J.M., Williams, S.M., Grayson, B.E., Smith, M.S., Friedman, J.E. et al. (2009) Maternal high-fat diet triggers lipotoxicity in the fetal livers of nonhuman primates. *J. Clin. Invest.* **119**, 323–335
- 38 Rivera, H.M., Kievit, P., Kirigiti, M.A., Bauman, L.A., Baquero, K., Blundell, P. et al. (2015) Maternal high-fat diet and obesity impact palatable food intake and dopamine signaling in nonhuman primate offspring. *Obesity (Silver Spring)* **23**, 2157–2164, <https://doi.org/10.1002/oby.21306>
- 39 Abi Khalil, C., Travert, F., Fetita, S., Rouzet, F., Porcher, R., Riveline, J.P. et al. (2010) Fetal exposure to maternal type 1 diabetes is associated with renal dysfunction at adult age. *Diabetes* **59**, 2631–2636, <https://doi.org/10.2337/db10-0419>
- 40 Silverwood, R.J., Pierce, M., Hardy, R., Thomas, C., Ferro, C., Savage, C. et al. (2013) Early-life overweight trajectory and CKD in the 1946 British Birth Cohort Study. *Am. J. Kidney Dis.* **62**, 276–284, <https://doi.org/10.1053/j.ajkd.2013.03.032>

- 41 Hsu, C.W., Yamamoto, K.T., Henry, R.K., De Roos, A.J. and Flynn, J.T. (2014) Prenatal risk factors for childhood CKD. *J. Am. Soc. Nephrol.* **25**, 2105–2111, <https://doi.org/10.1681/ASN.2013060582>
- 42 Glastras, S.J., Chen, H., McGrath, R.T., Zaky, A.A., Gill, A.J., Pollock, C.A. et al. (2016) Effect of GLP-1 receptor activation on offspring kidney health in a rat model of maternal obesity. *Sci. Rep.* **6**, 23525, <https://doi.org/10.1038/srep23525>
- 43 Glastras, S.J., Chen, H., Teh, R., McGrath, R.T., Chen, J., Pollock, C.A. et al. (2016) Mouse models of diabetes, obesity and related kidney disease. *PLoS ONE* **11**, e0162131, <https://doi.org/10.1371/journal.pone.0162131>
- 44 Glastras, S.J., Tsang, M., Teh, R., Chen, H., McGrath, R.T., Zaky, A.A. et al. (2016) Maternal obesity promotes diabetic nephropathy in rodent offspring. *Sci. Rep.* **6**, 27769, <https://doi.org/10.1038/srep27769>
- 45 Glastras, S.J., Wong, M.G., Chen, H., Zhang, J., Zaky, A., Pollock, C.A. et al. (2015) FXR expression is associated with dysregulated glucose and lipid levels in the offspring kidney induced by maternal obesity. *Nutr. Metab. (Lond.)* **12**, 40, <https://doi.org/10.1186/s12986-015-0032-3>
- 46 Glastras, S.J., Chen, H., Tsang, M., Teh, R., McGrath, R.T., Zaky, A. et al. (2017) The renal consequences of maternal obesity in offspring are overwhelmed by postnatal high fat diet. *PLoS ONE* **12**, e0172644, <https://doi.org/10.1371/journal.pone.0172644>
- 47 Taylor, P.D., Samuelsson, A.M. and Poston, L. (2014) Maternal obesity and the developmental programming of hypertension: a role for leptin. *Acta Physiol.* **210**, 508–523, <https://doi.org/10.1111/apha.12223>
- 48 Dötsch, J., Plank, C. and Amann, K. (2012) Fetal programming of renal function. *Pediatr. Nephrol.* **27**, 513–520, <https://doi.org/10.1007/s00467-011-1781-5>
- 49 Richter, V.F.I., Briffa, J.F., Moritz, K.M., Wlodek, M.E. and Hryciw, D.H. (2016) The role of maternal nutrition, metabolic function and the placenta in developmental programming of renal dysfunction. *Clin. Exp. Pharmacol. Physiol.* **43**, 135–141, <https://doi.org/10.1111/1440-1681.12505>
- 50 Tulassay, T. and Vasarhelyi, B. (2002) Birth weight and renal function. *Curr. Opin. Nephrol. Hypertens.* **11**, 347–352, <https://doi.org/10.1097/00041552-200205000-00013>
- 51 Luyckx, V.A. and Brenner, B.M. (2015) Birth weight, malnutrition and kidney-associated outcomes—a global concern. *Nat. Rev. Nephrol.* **11**, 135–149, <https://doi.org/10.1038/nrneph.2014.251>
- 52 White, S.L., Perkovic, V., Cass, A., Chang, C.L., Poulter, N.R., Spector, T. et al. (2009) Is low birth weight an antecedent of CKD in later life? A systematic review of observational studies. *Am. J. Kidney Dis.* **54**, 248–261, <https://doi.org/10.1053/j.ajkd.2008.12.042>
- 53 Reyes, L. and Manalich, R. (2005) Long-term consequences of low birth weight. *Kidney Int.* **68** (Suppl. 97), S107–S111, <https://doi.org/10.1111/j.1523-1755.2005.09718.x>
- 54 Abitbol, C.L. and Rodriguez, M.M. (2012) The long-term renal and cardiovascular consequences of prematurity. *Nat. Rev. Nephrol.* **8**, 265–274, <https://doi.org/10.1038/nrneph.2012.38>
- 55 Vikse, B.E., Irgens, L.M., Leivestad, T., Hallan, S. and Iversen, B.M. (2008) Low birth weight increases risk for end-stage renal disease. *J. Am. Soc. Nephrol.* **19**, 151–157, <https://doi.org/10.1681/ASN.2007020252>
- 56 Xu, R. and Zuo, L. (2010) Low birthweight and chronic kidney disease. *Nephrology* **15**, 18–22, <https://doi.org/10.1111/j.1440-1797.2010.01306.x>
- 57 Kandasamy, Y., Smith, R., Wright, I.M. and Lumbers, E.R. (2014) Reduced nephron endowment in the neonates of Indigenous Australian peoples. *J. Dev. Orig. Health Dis.* **5**, 31–35, <https://doi.org/10.1017/S2040174413000494>
- 58 Carmody, J.B. and Charlton, J.R. (2013) Short-term gestation, long-term risk: prematurity and chronic kidney disease. *Pediatrics* **131**, 1168–1179, <https://doi.org/10.1542/peds.2013-0009>
- 59 Das, S.K., Mannan, M., Faruque, A.S., Ahmed, T., McIntyre, H.D. and Mamun, A.A. (2016) Effect of birth weight on adulthood renal function: a bias adjusted meta-analytic approach. *Nephrology*, <https://doi.org/10.1111/nep.12732>
- 60 Andres, R.L. and Day, M.-C. (2000) Perinatal complications associated with maternal tobacco use. *Semin. Neonatol.* **5**, 231–241, <https://doi.org/10.1053/siny.2000.0025>
- 61 Rocha, S.O., Gomes, G.N., Forti, A.L., do Carmo Pinho Franco, M., Fortes, Z.B., de Fatima Cavanal, M. et al. (2005) Long-term effects of maternal diabetes on vascular reactivity and renal function in rat male offspring. *Pediatr. Res.* **58**, 1274–1279, <https://doi.org/10.1203/01.pdr.0000188698.58021.ff>
- 62 Yan, J., Li, X., Su, R., Zhang, K. and Yang, H. (2014) Long-term effects of maternal diabetes on blood pressure and renal function in rat male offspring. *PLoS ONE* **9**, e88269, <https://doi.org/10.1371/journal.pone.0088269>
- 63 Valero de Bernabé, J., Soriano, T., Albaladejo, R., Juarranz, M., Calle, M.E., Martinez, D. et al. (2004) Risk factors for low birth weight: a review. *Eur. J. Obstet. Gynecol. Reprod. Biol.* **116**, 3–15, <https://doi.org/10.1016/j.ejogrb.2004.03.007>
- 64 Andres, R.L. and Day, M.C. (2000) Perinatal complications associated with maternal tobacco use. *Semin. Neonatol.* **5**, 231–241, <https://doi.org/10.1053/siny.2000.0025>
- 65 Stangenberg, S., Nguyen, L.T., Chen, H., Al-Odat, I., Killingsworth, M.C., Gosnell, M.E. et al. (2015) Oxidative stress, mitochondrial perturbations and fetal programming of renal disease induced by maternal smoking. *Int. J. Biochem. Cell Biol.* **64**, 81–90, <https://doi.org/10.1016/j.biocel.2015.03.017>
- 66 Block, D.B., Mesquita, F.F., de Lima, I.P., Boer, P.A. and Gontijo, J.A. (2015) Fetal kidney programming by maternal smoking exposure: effects on kidney structure, blood pressure and urinary sodium excretion in adult offspring. *Nephron* **129**, 283–292, <https://doi.org/10.1159/000377634>
- 67 Chong, E. and Yosypiv, I.V. (2012) Developmental programming of hypertension and kidney disease. *Int. J. Nephrol.* **2012**, 760580, <https://doi.org/10.1155/2012/760580>
- 68 Reddy, M.A. and Natarajan, R. (2015) Recent developments in epigenetics of acute and chronic kidney diseases. *Kidney Int.*, <https://doi.org/10.1038/ki.2015.148>
- 69 Feinberg, A.P. and Fallin, M.D. (2015) Epigenetics at the crossroads of genes and the environment. *JAMA* **314**, 1129–1130, <https://doi.org/10.1001/jama.2015.10414>
- 70 Chu, A.Y., Tin, A., Schlosser, P., Ko, Y.A., Qiu, C., Yao, C. et al. (2017) Epigenome-wide association studies identify DNA methylation associated with kidney function. *Nat. Commun.* **8**, 1286, <https://doi.org/10.1038/s41467-017-01297-7>

- 71 Ko, Y.A., Mohtat, D., Suzuki, M., Park, A.S., Izquierdo, M.C., Han, S.Y. et al. (2013) Cytosine methylation changes in enhancer regions of core pro-fibrotic genes characterize kidney fibrosis development. *Genome Biol.* **14**, R108, <https://doi.org/10.1186/gb-2013-14-10-r108>
- 72 Wing, M.R., Devaney, J.M., Joffe, M.M., Xie, D., Feldman, H.I., Dominic, E.A. et al. (2014) DNA methylation profile associated with rapid decline in kidney function: findings from the CRIC study. *Nephrol. Dial. Transplant* **29**, 864–872, <https://doi.org/10.1093/ndt/gft537>
- 73 Stangenberg, S., Chen, H., Wong, M.G., Pollock, C.A. and Saad, S. (2015) Fetal programming of chronic kidney disease: the role of maternal smoking, mitochondrial dysfunction, and epigenetic modification. *Am. J. Physiol. Renal Physiol.* **308**, F1189–F1196, <https://doi.org/10.1152/ajprenal.00638.2014>
- 74 Woroniecki, R., Gaikwad, A.B. and Susztak, K. (2011) Fetal environment, epigenetics, and pediatric renal disease. *Pediatr. Nephrol.* **26**, 705–711, <https://doi.org/10.1007/s00467-010-1714-8>
- 75 Zohdi, V., Sutherland, M.R., Lim, K., Gubhaju, L., Zimanyi, M.A. and Black, M.J. (2012) Low birth weight due to intrauterine growth restriction and/or preterm birth: effects on nephron number and long-term renal health. *Int. J. Nephrol.* **2012**, 136942, <https://doi.org/10.1155/2012/136942>
- 76 Dorey, E.S., Pantaleon, M., Weir, K.A. and Moritz, K. (2014) Adverse prenatal environments and kidney development: implications for programming of adult disease. *Reproduction*, <https://doi.org/10.1530/REP-13-0478>
- 77 Slickers, J.E., Olshan, A.F., Siega-Riz, A.M., Honein, M.A. and Aylsworth, A.S. (2008) Maternal body mass index and lifestyle exposures and the risk of bilateral renal agenesis or hypoplasia: the National Birth Defects Prevention Study. *Am. J. Epidemiol.* **168**, 1259–1267, <https://doi.org/10.1093/aje/kwn248>
- 78 Taal, H.R., Geelhoed, J.J., Steegers, E.A., Hofman, A., Moll, H.A., Lequin, M. et al. (2011) Maternal smoking during pregnancy and kidney volume in the offspring: the Generation R Study. *Pediatr. Nephrol.* **26**, 1275–1283, <https://doi.org/10.1007/s00467-011-1848-3>
- 79 Marabita, F., Almgren, M., Sjöholm, L.K., Kular, L., Liu, Y., James, T. et al. (2017) Smoking induces DNA methylation changes in Multiple Sclerosis patients with exposure-response relationship. *Sci. Rep.* **7**, 14589, <https://doi.org/10.1038/s41598-017-14788-w>
- 80 Ladd-Acosta, C., Shu, C., Lee, B.K., Gidaya, N., Singer, A., Schieve, L.A. et al. (2016) Presence of an epigenetic signature of prenatal cigarette smoke exposure in childhood. *Environ. Res.* **144**, 139–148, <https://doi.org/10.1016/j.envres.2015.11.014>
- 81 Meng, W., Zhu, Z., Jiang, X., Too, C.L., Uebe, S., Jagodic, M. et al. (2017) DNA methylation mediates genotype and smoking interaction in the development of anti-citrullinated peptide antibody-positive rheumatoid arthritis. *Arth. Res. Ther.* **19**, 71, <https://doi.org/10.1186/s13075-017-1276-2>
- 82 Lecoutre, S. and Breton, C. (2015) Maternal nutritional manipulations program adipose tissue dysfunction in offspring. *Front. Physiol.* **6**, 158, <https://doi.org/10.3389/fphys.2015.00158>
- 83 Long, N.M., Rule, D.C., Zhu, M.J., Nathanielsz, P.W. and Ford, S.P. (2012) Maternal obesity upregulates fatty acid and glucose transporters and increases expression of enzymes mediating fatty acid biosynthesis in fetal adipose tissue depots. *J. Anim. Sci.* **90**, 2201–2210, <https://doi.org/10.2527/jas.2011-4343>
- 84 White, U.A. and Stephens, J.M. (2010) Transcriptional factors that promote formation of white adipose tissue. *Mol. Cell Endocrinol.* **318**, 10–14, <https://doi.org/10.1016/j.mce.2009.08.023>
- 85 Shankar, K., Harrell, A., Liu, X., Gilchrist, J.M., Ronis, M.J.J. and Badger, T.M. (2008) Maternal obesity at conception programs obesity in the offspring. *Am. J. Physiol. Regul. Integr. Compar. Physiol.* **294**, R528–R538, <https://doi.org/10.1152/ajpregu.00316.2007>
- 86 Muhlhauser, B.S., Duffield, J.A. and McMillen, I.C. (2007) Increased maternal nutrition stimulates peroxisome proliferator activated receptor-gamma, adiponectin, and leptin messenger ribonucleic acid expression in adipose tissue before birth. *Endocrinology* **148**, 878–885, <https://doi.org/10.1210/en.2006-1115>
- 87 Declèves, A.-E., Zolkipli, Z., Satriano, J., Wang, L., Nakayama, T., Rogac, M. et al. Regulation of lipid accumulation by AMK-activated kinase in high fat diet-induced kidney injury. *Kidney Int.* **85**, 611–623, <https://doi.org/10.1038/ki.2013.462>
- 88 Gil-Campos, M., Canete, R.R. and Gil, A. (2004) Adiponectin, the missing link in insulin resistance and obesity. *Clin. Nutr.* **23**, 963–974, <https://doi.org/10.1016/j.clnu.2004.04.010>
- 89 Masuyama, H. and Hiramatsu, Y. (2012) Effects of a high-fat diet exposure in utero on the metabolic syndrome-like phenomenon in mouse offspring through epigenetic changes in adipocytokine gene expression. *Endocrinology* **153**, 2823–2830, <https://doi.org/10.1210/en.2011-2161>
- 90 Kirk, S.L., Samuelsson, A.-M., Argenton, M., Dhonye, H., Kalamatiannos, T., Poston, L. et al. (2009) Maternal obesity induced by diet in rats permanently influences central processes regulating food intake in offspring. *PLoS ONE* **4**, e5870, <https://doi.org/10.1371/journal.pone.0005870>
- 91 Wensveen, F.M., Valentić, S., Šestan, M., Turk Wensveen, T. and Polić, B. (2015) The “Big Bang” in obese fat: events initiating obesity-induced adipose tissue inflammation. *Eur. J. Immunol.* **45**, 2446–2456, <https://doi.org/10.1002/eji.201545502>
- 92 Xu, H., Barnes, G.T., Yang, Q., Tan, G., Yang, D., Chou, C.J. et al. (2003) Chronic inflammation in fat plays a crucial role in the development of obesity-related insulin resistance. *J. Clin. Invest.* **112**, 1821–1830, <https://doi.org/10.1172/JCI200319451>
- 93 Myatt, L. and Maloyan, A. (2016) Obesity and placental function. *Semin. Reprod. Med.* **34**, 42–49, <https://doi.org/10.1055/s-0035-1570027>
- 94 Sfruzzi-Perri, A.N. and Camm, E.J. (2016) The programming power of the placenta. *Front. Physiol.* **7**, 33, <https://doi.org/10.3389/fphys.2016.00033>
- 95 Brett, K.E., Ferraro, Z.M., Yockell-Lelievre, J., Gruslin, A. and Adamo, K.B. (2014) Maternal-fetal nutrient transport in pregnancy pathologies: the role of the placenta. *Int. J. Mol. Sci.* **15**, 16153–16185, <https://doi.org/10.3390/ijms150916153>
- 96 Jansson, T., Wennergren, M. and Powell, T.L. (1999) Placental glucose transport and GLUT 1 expression in insulin-dependent diabetes. *Am. J. Obstet. Gynecol.* **180**, 163–168, [https://doi.org/10.1016/S0002-9378\(99\)70169-9](https://doi.org/10.1016/S0002-9378(99)70169-9)
- 97 Desoye, G. and Nolan, C.J. (2016) The fetal glucose steal: an underappreciated phenomenon in diabetic pregnancy. *Diabetologia*, <https://doi.org/10.1007/s00125-016-3931-6>
- 98 Barrett, H.L., Dekker Nitert, M., McIntyre, H.D. and Callaway, L.K. (2014) Normalizing metabolism in diabetic pregnancy: is it time to target lipids? *Diabetes Care* **37**, 1484–1493, <https://doi.org/10.2337/dc13-1934>
- 99 Gil-Sánchez, A., Demmelmair, H., Parrilla, J., Koletzko, B. and Larqué, E. (2011) Mechanisms involved in the selective transfer of long chain polyunsaturated fatty acids to the fetus. *Front. Genet.* **2**, <https://doi.org/10.3389/fgene.2011.00057>

- 100 Zhu, M.J., Ma, Y., Long, N.M., Du, M. and Ford, S.P. (2010) Maternal obesity markedly increases placental fatty acid transporter expression and fetal blood triglycerides at midgestation in the ewe. *Am. J. Physiol. Regul. Integr. Comp. Physiol.* **299**, R1224–R1231, <https://doi.org/10.1152/ajpregu.00309.2010>
- 101 Diaz, P., Harris, J., Rosario, F.J., Powell, T.L. and Jansson, T. (2015) Increased placental fatty acid transporter 6 and binding protein 3 expression and fetal liver lipid accumulation in a mouse model of obesity in pregnancy. *Am. J. Physiol. Regul. Integr. Comp. Physiol.* **309**, R1569–R1577, <https://doi.org/10.1152/ajpregu.00385.2015>
- 102 Lager, S., Ramirez, V.I., Gaccioli, F., Jang, B., Jansson, T. and Powell, T.L. (2016) Protein expression of fatty acid transporter 2 is polarized to the trophoblast basal plasma membrane and increased in placentas from overweight/obese women. *Placenta* **40**, 60–66, <https://doi.org/10.1016/j.placenta.2016.02.010>
- 103 Long, N.M., Rule, D.C., Tuersunjiang, N., Nathanielsz, P.W. and Ford, S.P. (2015) Maternal obesity in sheep increases fatty acid synthesis, upregulates nutrient transporters, and increases adiposity in adult male offspring after a feeding challenge. *PLoS ONE* **10**, e0122152, <https://doi.org/10.1371/journal.pone.0122152>
- 104 Qiao, L., Guo, Z., Bosco, C., Guidotti, S., Wang, Y., Wang, M. et al. (2015) Maternal high-fat feeding increases placental lipoprotein lipase activity by reducing SIRT1 expression in mice. *Diabetes* **64**, 3111–3120, <https://doi.org/10.2337/db14-1627>
- 105 Cooke, A.A., Connaughton, R.M., Lyons, C.L., McMorrow, A.M. and Roche, H.M. (2016) Fatty acids and chronic low grade inflammation associated with obesity and the metabolic syndrome. *Eur. J. Pharmacol.*, <https://doi.org/10.1016/j.ejphar.2016.04.021>
- 106 Parlee, S.D. and MacDougald, O.A. (2014) Maternal nutrition and risk of obesity in offspring: the Trojan horse of developmental plasticity. *Biochim. Biophys. Acta* **1842**, 495–506, <https://doi.org/10.1016/j.bbadis.2013.07.007>
- 107 Aye, I.L., Lager, S., Ramirez, V.I., Gaccioli, F., Dudley, D.J., Jansson, T. et al. (2014) Increasing maternal body mass index is associated with systemic inflammation in the mother and the activation of distinct placental inflammatory pathways. *Biol. Reprod.* **90**, 129, <https://doi.org/10.1095/biolreprod.113.116186>
- 108 Frias, A.E., Morgan, T.K., Evans, A.E., Rasanen, J., Oh, K.Y., Thornburg, K.L. et al. (2011) Maternal high-fat diet disturbs uteroplacental hemodynamics and increases the frequency of stillbirth in a nonhuman primate model of excess nutrition. *Endocrinology* **152**, 2456–2464, <https://doi.org/10.1210/en.2010-1332>
- 109 Farley, D., Tejero, M.E., Comuzzie, A.G., Higgins, P.B., Cox, L., Werner, S.L. et al. (2009) Feto-placental adaptations to maternal obesity in the baboon. *Placenta* **30**, 752–760, <https://doi.org/10.1016/j.placenta.2009.06.007>
- 110 Wilson, R.M., Marshall, N.E., Jeske, D.R., Purnell, J.Q., Thornburg, K. and Messaoudi, I. (2015) Maternal obesity alters immune cell frequencies and responses in umbilical cord blood samples. *Pediatr. Allergy Immunol.* **26**, 344–351, <https://doi.org/10.1111/pai.12387>
- 111 Dosch, N.C., Guslits, E.F., Weber, M.B., Murray, S.E., Ha, B., Coe, C.L. et al. (2016) Maternal obesity affects inflammatory and iron indices in umbilical cord blood. *J. Pediatr.* **172**, 20–28, <https://doi.org/10.1016/j.jpeds.2016.02.023>
- 112 Mitsuya, K., Parker, A.N., Liu, L., Ruan, J., Vissers, M.C.M. and Myatt, L. (2017) Alterations in the placental methylome with maternal obesity and evidence for metabolic regulation. *PLoS ONE* **12**, e0186115, <https://doi.org/10.1371/journal.pone.0186115>
- 113 Malti, N., Merzouk, H., Merzouk, S.A., Loukidi, B., Karaouzene, N., Malti, A. et al. (2014) Oxidative stress and maternal obesity: feto-placental unit interaction. *Placenta* **35**, 411–416, <https://doi.org/10.1016/j.placenta.2014.03.010>
- 114 Martino, J., Sebert, S., Segura, M.T., García-Valdés, L., Florido, J., Padilla, M.C. et al. (2016) Maternal body weight and gestational diabetes differentially influence placental and pregnancy outcomes. *J. Clin. Endocrinol. Metab.* **101**, 59–68, <https://doi.org/10.1210/jc.2015-2590>
- 115 Wu, L.L., Russell, D.L., Wong, S.L., Chen, M., Tsai, T.S., St John, J.C. et al. (2015) Mitochondrial dysfunction in oocytes of obese mothers: transmission to offspring and reversal by pharmacological endoplasmic reticulum stress inhibitors. *Development* **142**, 681–691, <https://doi.org/10.1242/dev.114850>
- 116 Mele, J., Muralimanoharan, S., Maloyan, A. and Myatt, L. (2014) Impaired mitochondrial function in human placenta with increased maternal adiposity. *Am. J. Physiol. Endocrinol. Metab.* **307**, E419–E425, <https://doi.org/10.1152/ajpendo.00025.2014>
- 117 Borengasser, S.J., Faske, J., Kang, P., Blackburn, M.L., Badger, T.M. and Shankar, K. (2014) In utero exposure to prepregnancy maternal obesity and postweaning high-fat diet impair regulators of mitochondrial dynamics in rat placenta and offspring. *Physiol. Genomics* **46**, 841–850, <https://doi.org/10.1152/physiolgenomics.00059.2014>
- 118 Hastie, R. and Lappas, M. (2014) The effect of pre-existing maternal obesity and diabetes on placental mitochondrial content and electron transport chain activity. *Placenta* **35**, 673–683, <https://doi.org/10.1016/j.placenta.2014.06.368>
- 119 Egger, G., Liang, G., Aparicio, A. and Jones, P.A. (2004) Epigenetics in human disease and prospects for epigenetic therapy. *Nature* **429**, 457–463, <https://doi.org/10.1038/nature02625>
- 120 Cooper, W.N., Khulan, B., Owens, S., Elks, C.E., Seidel, V., Prentice, A.M. et al. (2012) DNA methylation profiling at imprinted loci after periconceptual micronutrient supplementation in humans: results of a pilot randomized controlled trial. *FASEB J.* **26**, 1782–1790, <https://doi.org/10.1096/fj.11-192708>
- 121 Dominguez-Salas, P., Moore, S.E., Baker, M.S., Bergen, A.W., Cox, S.E., Dyer, R.A. et al. (2014) Maternal nutrition at conception modulates DNA methylation of human metastable epialleles. *Nat. Commun.* **5**, 3746, <https://doi.org/10.1038/ncomms4746>
- 122 Waterland, R.A., Keller Mayer, R., Laritsky, E., Rayco-Solon, P., Harris, R.A., Travisano, M. et al. (2010) Season of conception in rural gambia affects DNA methylation at putative human metastable epialleles. *PLoS Genet.* **6**, e1001252, <https://doi.org/10.1371/journal.pgen.1001252>
- 123 Warzak, D.A., Johnson, S.A., Ellersieck, M.R., Roberts, R.M., Zhang, X., Ho, S.M. et al. (2015) Effects of post-weaning diet on metabolic parameters and DNA methylation status of the cryptic promoter in the A(vy) allele of viable yellow mice. *J. Nutr. Biochem.* **26**, 667–674, <https://doi.org/10.1016/j.jnutbio.2015.01.003>
- 124 Dronavalli, S., Duka, I. and Bakris, G.L. (2008) The pathogenesis of diabetic nephropathy. *Nat. Clin. Pract. Endocrinol. Metab.* **4**, 444–452, <https://doi.org/10.1038/ncpendmet0894>

- 125 Efstratiadis, G., Divani, M., Katsioulis, E. and Vergoulas, G. (2009) Renal fibrosis. *Hippokratia* **13**, 223–228
- 126 Dabelea, D. and Crume, T. (2011) Maternal environment and the transgenerational cycle of obesity and diabetes. *Diabetes* **60**, 1849–1855, <https://doi.org/10.2337/db11-0400>
- 127 Li, C.C., Young, P.E., Maloney, C.A., Eaton, S.A., Cowley, M.J., Buckland, M.E. et al. (2013) Maternal obesity and diabetes induces latent metabolic defects and widespread epigenetic changes in isogenic mice. *Epigenetics* **8**, 602–611, <https://doi.org/10.4161/epi.24656>