



Red fluorescent genetically encoded Ca^{2+} indicators for use in mitochondria and endoplasmic reticulum

Jiahui Wu*, David L. Prole†, Yi Shen*, Zhihong Lin‡, Aswini Gnanasekaran‡, Yingjie Liu§, Lidong Chen*, Hang Zhou*, S. R. Wayne Chen§¶, Yuriy M. Usachev‡, Colin W. Taylor† and Robert E. Campbell*¹

*Department of Chemistry, University of Alberta, Edmonton, Alberta, Canada, T6G 2G2

†Department of Pharmacology, University of Cambridge, Cambridge CB2 1PD, U.K.

‡Department of Pharmacology, University of Iowa Carver College of Medicine, Iowa City, IA 52242, U.S.A.

§Department of Physiology and Pharmacology, Libin Cardiovascular Institute of Alberta, University of Calgary, Calgary, Alberta, Canada, T2N 4N1

¶Department of Biochemistry and Molecular Biology, Libin Cardiovascular Institute of Alberta, University of Calgary, Calgary, Alberta, Canada, T2N 4N1

Ca^{2+} is a key intermediary in a variety of signalling pathways and undergoes dynamic changes in its cytoplasmic concentration due to release from stores within the endoplasmic reticulum (ER) and influx from the extracellular environment. In addition to regulating cytoplasmic Ca^{2+} signals, these responses also affect the concentration of Ca^{2+} within the ER and mitochondria. Single fluorescent protein-based Ca^{2+} indicators, such as the GCaMP series based on GFP, are powerful tools for imaging changes in the concentration of Ca^{2+} associated with intracellular signalling pathways. Most GCaMP-type indicators have dissociation constants (K_d) for Ca^{2+} in the high nanomolar to low micromolar range and are therefore optimal for measuring cytoplasmic $[\text{Ca}^{2+}]$, but poorly suited for use in mitochondria and ER where $[\text{Ca}^{2+}]$ can reach concentrations of several hundred micromolar. We now report GCaMP-type low-affinity

red fluorescent genetically encoded Ca^{2+} indicators for optical imaging (LAR-GECO), engineered to have K_d values of 24 μM (LAR-GECO1) and 12 μM (LAR-GECO1.2). We demonstrate that these indicators can be used to image mitochondrial and ER Ca^{2+} dynamics in several cell types. In addition, we perform two-colour imaging of intracellular Ca^{2+} dynamics in cells expressing both cytoplasmic GCaMP and ER-targeted LAR-GECO1. The development of these low-affinity intensimetric red fluorescent Ca^{2+} indicators enables monitoring of ER and mitochondrial Ca^{2+} in combination with GFP-based reporters.

Key words: endoplasmic reticulum (ER), fluorescence Ca^{2+} imaging, GCaMP, mitochondrion, multicolour imaging, red fluorescent genetically encoded Ca^{2+} indicator for optical imaging (R-GECO).

INTRODUCTION

As a ubiquitous intracellular messenger, Ca^{2+} has essential physiological roles in a variety of cellular processes including fertilization and development, muscle contraction and neurotransmitter release [1]. The development and subsequent application of genetically encoded Ca^{2+} indicators based on fluorescent proteins (FPs) has revolutionized the study of intracellular Ca^{2+} dynamics. There are two predominant classes of FP-based Ca^{2+} indicator: the cameleon-type based on Förster resonance energy transfer (FRET) [2]; and the GCaMP-type based on a single circularly permuted FP (cpFP) [3,4]. Cameleon-type Ca^{2+} indicators are composed of a genetic fusion of calmodulin (CaM) and a short Ca^{2+} -CaM-binding peptide (e.g. M13), flanked by a blue-shifted donor FP and a red-shifted acceptor FP. As FRET is strongly dependent on the distance between donor and acceptor fluorophores, the conformational change associated with the Ca^{2+} -dependent interaction of CaM and M13 leads to a change in FRET efficiency and a ratiometric change in the fluorescence signal [2]. In contrast, GCaMP-type indicators consist of a cpFP genetically fused to an N-terminal M13 peptide and a C-terminal CaM domain [3,4]. The Ca^{2+} -dependent interaction of CaM and M13 modifies the environment of the FP chromophore

such that the fluorescence undergoes an intensimetric increase.

The cameleon and GCaMP classes of indicators are each associated with specific advantages and disadvantages. For example, GCaMP-type indicators have larger signal changes and a wider range of fluorescence hues [5–9], whereas cameleons tend to have smaller signal changes at each wavelength, but benefit from inherently ratiometric signal changes. Of particular relevance to the present study, cameleons have traditionally also been more amenable to genetic ‘tuning’ of the equilibrium dissociation constants for Ca^{2+} (K_d) to provide variants optimized for use in environments containing low [10] or high [11–13] concentrations of Ca^{2+} . Accordingly, certain cameleon-type Ca^{2+} indicators have been useful for imaging Ca^{2+} dynamics within the endoplasmic reticulum (ER) and sarcoplasmic reticulum (SR), where concentrations of Ca^{2+} are relatively high [2,11,14]. These organelles are intracellular Ca^{2+} reservoirs in eukaryotic cells and therefore play central roles in Ca^{2+} signalling [1,15,16].

Although a relatively large number of improved cameleon- and GCaMP-type indicators have been reported, only a small subset has been optimized for use in environments containing high concentrations of Ca^{2+} , such as the ER and SR [15,17]. Likewise, there are relatively few variants optimized for use in

Abbreviations: $[\text{Ca}^{2+}]$ and $[\text{Ca}^{2+}]_{\text{mt}}$, free Ca^{2+} concentration in cytosol and mitochondrial matrix, respectively; CaM, calmodulin; cpFP, circularly permuted fluorescent protein; DMEM, Dulbecco's modified Eagle's medium; DRG, dorsal root ganglion; ER, endoplasmic reticulum; FP, fluorescent protein; FRET, Förster resonance energy transfer; GFP, green fluorescent protein; HBS, HEPES-buffered saline; HEK, human embryonic kidney; LAR-GECO, low-affinity red fluorescent genetically encoded Ca^{2+} indicator for optical imaging; LED, light-emitting diode; NA, numerical aperture; NTA, nitrilotriacetic acid; RFP, red fluorescent protein; RyR2, type 2 ryanodine receptor; SERCA, sarcoplasmic/endoplasmic reticulum Ca^{2+} -ATPase; SOICR, store overload-induced Ca^{2+} release; SR, sarcoplasmic reticulum.

¹ To whom correspondence should be addressed (email rc4@ualberta.ca).

mitochondria, where concentrations of Ca^{2+} can change over three orders of magnitude ($\sim 0.1 \mu\text{M}$ to $\sim 100 \mu\text{M}$) [12,18,19]. The primary reason for the lack of appropriate GCaMP-type indicators is that, due to their more intricate sensing mechanism, mutations in the CaM domain that could potentially increase the K_d of the indicator are also likely to interfere with the mechanism by which fluorescence is modulated. Indeed, our previous efforts to decrease the Ca^{2+} affinity of GCaMP-type indicators were hampered by seemingly unavoidable and dramatic decreases in the performance of the indicator.

The two most useful cameleon-type indicators engineered to have decreased Ca^{2+} affinity are D1ER [11] and D4cpv [12]. The Ca^{2+} -sensing domains of both D1ER and D4cpv were engineered by redesigning the interaction between CaM and M13 such that they would interact with each other, but not with endogenous binding partners. Although the redesign successfully produced an orthogonal CaM–M13 pair, it also decreased the apparent affinity for Ca^{2+} to $\sim 60 \mu\text{M}$ for both indicators. However, as these FRET-based Ca^{2+} indicators contain CFP and YFP, it is generally impractical for combined use with GFP variants in multicolour imaging. More recently, a green Ca^{2+} indicator named CatchER, based on a single GFP, was reported [20]. In this design, three β -strands in GFP were engineered to bind Ca^{2+} directly, causing a change in fluorescence. However, the fluorescence change of CatchER upon binding to Ca^{2+} is relatively small (less than 2-fold), which limits its utility [20]. A Ca^{2+} sensor termed GAP1, based on a GFP–aequorin fusion protein, has also been reported to exhibit an excitation ratiometric response to changes in the concentrations of Ca^{2+} within ER and mitochondria [21]. A shared drawback of the cameleons, CatchER and GAP1 is that they require use of blue light for excitation, which leads to relatively high levels of autofluorescence and phototoxicity, and prohibits simultaneous imaging with green fluorescent indicators. Longer wavelength indicators based on a RFP, rather than a GFP, are associated with lower background fluorescence, lower phototoxicity and deeper tissue penetration. Accordingly, there remains a substantial need for RFP-based Ca^{2+} indicators optimized for imaging of Ca^{2+} dynamics in organelles containing relatively high concentrations of Ca^{2+} , such as ER, SR and mitochondria.

In the present paper, we describe the combined use of rational design and directed evolution for the engineering of two RFP-based Ca^{2+} indicators for imaging of Ca^{2+} dynamics within mitochondria and ER. These new indicators show high sensitivity to changes in the concentration of Ca^{2+} within organelles that contain relatively high concentrations of Ca^{2+} , and are useful for multicolour imaging when paired with green fluorescent indicators.

EXPERIMENTAL

Engineering of LAR-GECO1 and LAR-GECO1.2

R-GECO1 and R-GECO1.2 in pTorPE [5] were used as the initial templates for engineering low-affinity red fluorescent genetically encoded Ca^{2+} indicators for optical imaging (LAR-GECOs). Point mutations and randomizations of specific amino acids were introduced using a QuikChange[®] Lightning Site-Directed Mutagenesis Kit (Agilent) as per the manufacturer's instructions. Oligonucleotides containing specific mutations were designed using an online mutagenesis primer design program (Agilent). Random mutagenesis was performed by error-prone PCR amplification [22]. To construct mammalian expression plasmids, LAR-GECOs in the pBAD/His B vector (Life Technologies) were used as the templates. The ER-targeted GECO constructs

were generated using primers containing an ER-targeting sequence (MLLPVLLLGLLGAAAD) [23] and an ER-retention signal sequence (KDEL) [24]. The PCR products were subjected to digestion with BamHI and EcoRI restriction enzymes (Thermo Scientific). The digested DNA fragments were ligated with a modified pcDNA3 plasmid that had previously been digested with the same two enzymes. For mito-LAR-GECO1.2, two copies of the targeting sequence (MSVLTPLLLRGLTGSARRLPV-PRAKIHSLGDP) from cytochrome *c* oxidase VIII were added to the N-terminal end of LAR-GECO1.2. Plasmids were purified with the GeneJET miniprep kit (Thermo Scientific) and then sequenced using the BigDye Terminator Cycle Sequencing kit (Applied Biosystems).

A custom imaging system [25] was used for screening LAR-GECO variants in the context of *Escherichia coli* colonies. Specifically, LAR-GECO variants in the pBAD/His B vector (Life Technologies) were electroporated into the *E. coli* strain DH10B (Invitrogen). *E. coli* containing these variants were then cultured on 10-cm LB agar Petri dishes supplemented with 400 $\mu\text{g}/\text{ml}$ ampicillin (Sigma) and 0.02% L-arabinose (Alfa Aesar) at 37°C overnight. These Petri dishes were then placed at room temperature for 24 h before screening. During screening, an image was captured for each Petri dish by using an excitation filter of 542/27 nm to illuminate *E. coli* colonies expressing LAR-GECO variants and an emission filter of 609/57 nm. The colonies with the highest fluorescence intensity (top 0.1%) in each image were then picked and cultured in 4 ml liquid LB with 100 $\mu\text{g}/\text{ml}$ ampicillin and 0.02% L-arabinose at 37°C overnight. Proteins were then extracted from the liquid LB culture and subjected to a secondary screen using a Safire2 fluorescence microplate reader (Tecan).

In vitro characterization of LAR-GECO1 and LAR-GECO1.2

For detailed characterization of LAR-GECOs, proteins were expressed and purified as previously described [6]. Spectral measurements were performed in solutions containing 10 mM EGTA or 10 mM Ca^{2+} /NTA (nitrilotriacetic acid), 30 mM Mops and 100 mM KCl, pH 7.2. For determination of fluorescence quantum yield (ϕ), mCherry [26] was used as a standard. Procedures for measurement of fluorescence quantum yield, molar absorption coefficient (ϵ), $\text{p}K_a$, K_d for Ca^{2+} , and Ca^{2+} -association kinetics have been described previously [6]. For Ca^{2+} titration, Ca^{2+} /EDTA, Ca^{2+} /HEDTA [*N*-(2-hydroxyethyl)ethylenediamine-*N,N',N'*-triacetic acid], and Ca^{2+} /NTA buffers were prepared by mixing Ca^{2+} -saturated and Ca^{2+} -free buffers (30 mM Mops, 100 mM KCl and 10 mM chelating reagent, pH 7.2, either with or without 10 mM Ca^{2+}) to achieve buffer-free Ca^{2+} concentrations from 0 to 1.13 mM.

Imaging ER luminal Ca^{2+} with ER-LAR-GECO1, CatchER and ER-GAP1

HeLa, human embryonic kidney (HEK)-293 and U2-OS cells were cultured in Dulbecco's modified Eagle's medium (DMEM)/F12 medium (Life Technologies) supplemented with FBS (10%, Sigma–Aldrich) at 37°C in air containing 5% CO_2 . Cells were seeded on fibronectin-coated, glass-bottomed culture dishes and transiently transfected after 24 h with plasmids using Transit-LT1 (Mirus Bio). Cells were imaged 24–48 h after transfection, using an Olympus IX83 microscope with a $\times 100/1.49$ numerical aperture (NA) objective, at 20°C in Hepes-buffered saline (HBS). HBS had the following composition: 132 mM NaCl, 5 mM KCl, 2 mM MgCl_2 , 10 mM D-glucose, 10 mM Hepes and 2 mM CaCl_2 , pH 7.2. Ca^{2+} was omitted from nominally Ca^{2+} -free HBS. Cells were

illuminated alternately, via a 405/488/561/647-nm quad band dichroic/emitter (TRF89902, Chroma Technology), with a 559-nm light-emitting diode (LED) (Spectra X, Lumencor) for visualizing ER-LAR-GECO1 and a 488-nm diode laser (Coherent) for visualizing ER-GFP and CatchER. Ratiometric measurements of ER-GAP1 fluorescence were achieved by illuminating cells alternately with a 395-nm LED (Spectra X, Lumencor) or a 488-nm laser and measuring fluorescence emission at 520–550 nm using a 535/30 nm emission filter (Chroma Technology). With the filters used there was no significant cross-talk between blue, green and red channels. Images were acquired with an iXon Ultra electron multiplying charge-coupled device (EMCCD) camera (512 × 512 pixels) (Andor Technology) and images were processed using MetaMorph (Molecular Devices). All records were corrected for background fluorescence determined from regions outside cells. Fluorescence changes from regions of interest were expressed as F/F_0 , where F_0 and F denote the average fluorescence at the start of the experiment (F_0) and at each time point (F), respectively. Ratios of the ER-GAP1 fluorescence with alternating excitation at 488 nm and 395 nm were expressed as R (fluorescence intensity with 488-nm excitation/fluorescence intensity with 395-nm excitation), and R_0 was defined as the average value of R at the start of the experiment.

Imaging store overload-induced Ca²⁺ release in HEK-293 cells using ER-LAR-GECO1 and D1ER

HEK-293 cells stably expressing wild-type murine type 2 ryanodine receptors (RyR2) (GenBank® accession number: AF295105) were grown to 95% confluence in a 75-cm² flask, split with PBS, and plated in 100-mm tissue culture dishes at ~10% confluence for 18–20 h before transfection with cDNA encoding D1ER or ER-LAR-GECO1 using the calcium phosphate precipitation method. After 24 h, the growth medium was changed to an induction medium containing 1 μg/ml tetracycline (Sigma). After induction for ~22 h, the cells were perfused continuously with KRH buffer (125 mM NaCl, 5 mM KCl, 1.2 mM KH₂PO₄, 6 mM glucose, 1.2 mM MgCl₂ and 25 mM Hepes, pH 7.4) containing various concentrations of CaCl₂ (0 mM, 1 mM and 2 mM) and tetracaine (1 mM) for estimating the store capacity or caffeine (20 mM) for estimating the minimum store level by depleting the ER Ca²⁺ stores at room temperature (23 °C). For D1ER recordings, images were captured with Compix Simple PCI 6 software every 2 s using an inverted microscope (Nikon TE2000-S) equipped with an S-Fluor ×20/0.75 NA objective. The filters used for D1ER imaging were excitation, 436 ± 20 nm for CFP, and 500 ± 20 nm for YFP; and emission, 465 ± 30 nm for CFP, and 535 ± 30 nm for YFP, with a dichroic mirror (500 nm). FRET was determined from the ratio of the light emission at 535 nm and 465 nm. For ER-LAR-GECO1 recordings, images were captured using a Nikon AIR confocal system. The cells were excited using a diode laser (561 nm) and fluorescence emission was detected at 570–620 nm.

Imaging LAR-GECO1.2 in mitochondria of neurons

Primary dorsal root ganglion (DRG) neuron cultures were prepared from adult C57BL/6J mice (8–12 weeks of age) and transfected with cDNA plasmids using an Amaxa nucleofection system (Lonza) as described previously [27,28]. Primary cultures of hippocampal neurons were prepared from neonatal (P0–P1) C57BL/6J mice and transfected with cDNA using Lipofectamine 2000 (Life Technologies) using the same protocol as previously described [27]. DRG or hippocampal neurons transfected with the mito-LAR-GECO1.2 plasmid were loaded with fura 2

acetoxymethyl ester (2 μM for 30 min) to perform simultaneous monitoring of the Ca²⁺ concentration within mitochondria ([Ca²⁺]_{mi}) and in the cytosol ([Ca²⁺]_i). Cells were then placed in a chamber for flowthrough perfusion and mounted on an inverted IX-71 microscope (Olympus). Cells were perfused with Hepes-buffered Hanks balanced salt solution (HBSS) composed of 140 mM NaCl, 5 mM KCl, 1.3 mM CaCl₂, 0.4 mM MgSO₄, 0.5 mM MgCl₂, 0.4 mM KH₂PO₄, 0.6 mM NaHPO₄, 3 mM NaHCO₃, 10 mM glucose and 10 mM Hepes, pH 7.4 with NaOH (310 mOsm/kg with sucrose). Fluorescence was excited sequentially at 340 nm (12 nm bandpass) 380 nm (12 nm bandpass), and 550 nm (12 nm bandpass) using a Polychrome V monochromator (TILL Photonics) and focused on the cells via a ×40/1.35 NA oil-immersion objective (Olympus). Fluorescence emission was separated from excitation by using a dual fluorophore beamsplitter FF493/574-Di01 (Semrock) and collected with a dual band emission filter FF01-512/630 (Semrock) using an IMAGO charge-coupled device (CCD) camera (640 × 480 pixels; TILL Photonics). 2 × 2 binning was used for acquisition (1 pixel ~500 nm). A series of 340 nm, 380 nm and 550 nm images was acquired every 2 s. [Ca²⁺]_i was calculated from the fluorescence ratio ($R = F_{340}/F_{380}$) using the formula $[Ca^{2+}]_i = K_d \beta (R - R_{min}) / (R_{max} - R)$, where K_d is dissociation constant and β is the scaling factor. R_{min} , R_{max} and β were calculated by application of 10 μM ionomycin in either Ca²⁺-free buffer (1 mM EGTA) or in HBSS (1.3 mM Ca²⁺). [Ca²⁺]_{mi} changes were quantified as $\Delta F/F_0 = (F - F_0)/F_0 \times 100\%$ where F is the fluorescence intensity at each time point ($\lambda_{ex} = 550$ nm) and F_0 is the fluorescence intensity in the resting cell before experimental manipulations. [Ca²⁺]_i data were analysed using TILLvisION (TILL Photonics) software. To stimulate neurons by depolarization, the extracellular KCl concentration was elevated by replacing equimolar amounts of extracellular NaCl with KCl.

Dual-colour imaging of cytosolic and ER luminal Ca²⁺

For dual-colour imaging of ER-LAR-GECO1 and Cyto-GCaMP3, HeLa cells (CCL2 line; A.T.C.C.) were cultured on collagen-coated 35-mm glass-bottomed dishes (Matsunami) until they reached 40–60% confluency. Transfection was performed by incubating HeLa cells with a mixture of 1 μg of plasmid DNA and 3 μl of Lipofectamine 2000 (Life Technologies) for 2 h. After incubation, the medium was changed to DMEM supplemented with FBS (10%), GlutaMAX™ (2 mM, Invitrogen), penicillin-G potassium salt (50 units/ml) and streptomycin sulfate (50 μg/ml). The cells were incubated for 24 h at 37 °C in air containing 5% CO₂. Prior to imaging, culture medium was changed to HBSS with 25 mM Hepes. Widefield imaging was performed on an inverted Nikon Eclipse Ti microscope equipped with a 200 W metal halide lamp (PRIOR Lumen), ×20/0.45 and ×60/1.40 NA objectives (Nikon), and a 16-bit QuantEM 512SC EMCCD camera (Photometrics). A filter set of 470/40 nm (excitation), 525/50 nm (emission), and 495 nm (dichroic) was used for Cyto-GCaMP3. Another filter set of 545/30 nm (excitation), 620/60 nm (emission) and 570 nm (dichroic) was used for ER-LAR-GECO1. For time-lapse imaging, HeLa cells were treated with 100 μM histamine.

For characterizing ER-LAR-GECO1 with Cyto-G-GECO1.1 in cultured human cells, cells were seeded on fibronectin-coated glass-bottomed culture dishes and transiently transfected after 24 h with plasmids using Transit-LT1 (Mirus Bio). Cells were imaged 24–48 h after transfection using an Olympus IX81 microscope with a ×60/1.45 NA objective, at 20 °C in HBS or nominally Ca²⁺-free HBS. Cells were illuminated

with 488 nm (for Cyto-G-GECO1.1) or 561 nm (for ER-LAR-GECO1) diode lasers (Olympus), using U-MNIBA (Olympus; excitation 470–495 nm, emission 510–550 nm) and LF561A (Semrock; excitation 550–570 nm, emission 580–630 nm) filters, respectively. With the filters used there was no significant crosstalk between green and red channels. Images were acquired with an iXon 897 EMCCD camera (Andor Technology) and processed using cellR software (Olympus). All records were corrected for background fluorescence determined from regions outside cells.

RESULTS AND DISCUSSION

Engineering of LAR-GECO1 and LAR-GECO1.2

To engineer new Ca^{2+} sensors with decreased affinity, we initially considered two single RFP-based Ca^{2+} indicators, R-GECO1 ($K_d = 0.48 \mu\text{M}$) [5] and R-GECO1.2 ($K_d = 1.2 \mu\text{M}$) [6], as potential templates. As an initial test of their ability to function in the ER, we fused each of these indicators to ER-targeting [23] and ER-retention sequences [24], and expressed them in HeLa cells. Both indicators showed ER localization in HeLa cells, but their fluorescence intensities were very low (Supplementary Figure S1). We suspected that the diminished brightness of these indicators might be due to competing interactions between either the CaM or M13 moieties and endogenous protein or peptide-binding partners in the ER, as previously suggested for cameleon-type indicators [29,30]. In an effort to circumvent these problems, we explored the introduction of orthogonal CaM–M13 pairs in R-GECO1 and R-GECO1.2 by mutagenesis of residues involved in interactions at the CaM–M13 interface. An anticipated additional benefit of such changes was a decreased K_d for binding of Ca^{2+} to the sensor, as reported for cameleon-type indicators with modified CaM–M13 interfaces [12]. To test this idea, mutations were introduced following three different strategies: (1) incorporation of the computationally designed D4 CaM–M13 pair (equivalent to introduction of point mutations V51W, F395A, V411A and L415I, numbered as in the PDB file 3EVR [31]) (Figure 1A) into R-GECO1 [12]; (2) screening of libraries created by randomization of Ala⁴⁷ of R-GECO1.2 (together with point mutation N45I from O-GECO1 [6]), with the reasoning that mutating Ala⁴⁷ could alter the interactions between this residue and the pocket formed by Phe³⁹⁵, Met⁴¹² and Leu⁴¹⁵ (Figure 1A) from the third EF-hand of CaM; and (3) library creation by randomization of Leu⁵⁷ of M13 in R-GECO1, with the reasoning that mutating Leu⁵⁷ could lead to variants with modified interactions with the hydrophobic pocket formed by Met³⁵⁴, Phe³⁶⁶ or Met³⁷⁴ of CaM (Figure 1A).

Incorporation of the D4 mutations into R-GECO1 (strategy 1) produced a variant, designated low-affinity R-GECO0.1 (LAR-GECO0.1), with a K_d of $\sim 20 \mu\text{M}$ and a ~ 10 -fold increase in fluorescence intensity upon binding to Ca^{2+} . For the second and third strategies, gene libraries were expressed in *E. coli*, colonies were screened for red fluorescence and promising bright variants were tested for responses to Ca^{2+} . From the R-GECO1.2 Ala47X library (strategy 2), we identified a variant, designated LAR-GECO0.2 (R-GECO1.2 with N45I and A47R), with a K_d of $\sim 8 \mu\text{M}$ and a ~ 15 -fold increase in fluorescence intensity upon binding to Ca^{2+} . From the R-GECO1 Leu57X library (strategy 3), we identified many functional variants, but none with substantially higher K_d values than R-GECO1. This suggests that modifying Leu⁵⁷ does not significantly alter the affinity for Ca^{2+} or the interactions between CaM and M13.

In an effort to improve the brightness of LAR-GECO0.1 and LAR-GECO0.2 further, we performed three and two rounds, respectively, of directed evolution with selection for variants with bright fluorescence. Specifically, we performed random

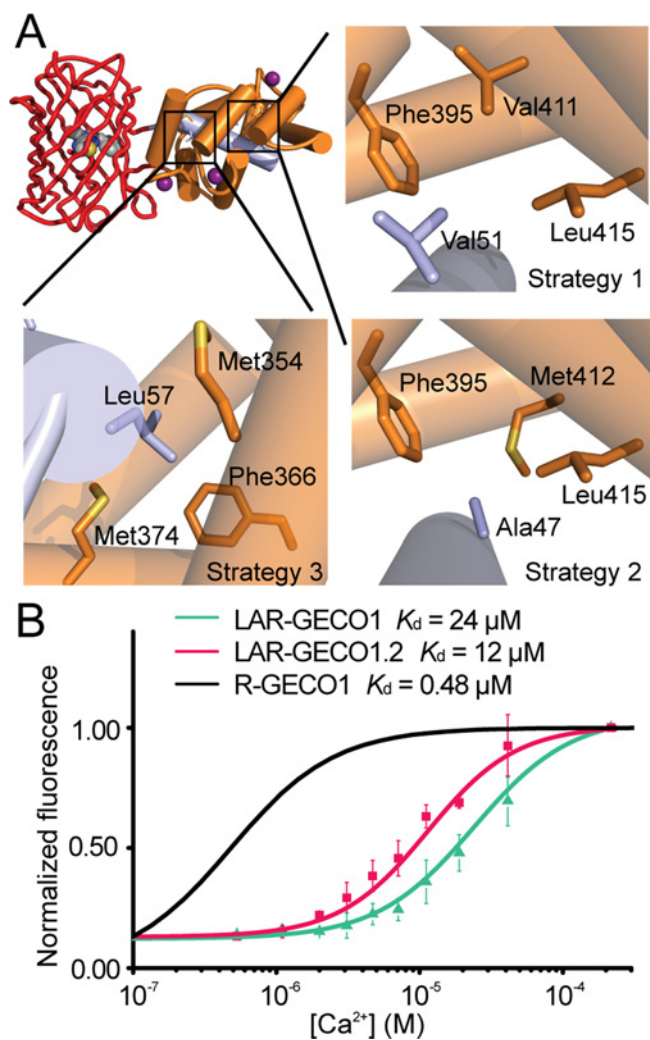


Figure 1 Strategies for development of LAR-GECO1 and LAR-GECO1.2 and their dissociation constants

(A) Strategies 1, 2 and 3 for making orthogonal CaM (orange)–M13 (grey) pairs with side chains of R-GECO1 (PDB code 4I2Y) shown in stick format [8]. (B) Normalized fluorescence intensities of LAR-GECO1, LAR-GECO1.2 and R-GECO1 as a function of free Ca^{2+} concentrations in buffer (10 mM Mops and 100 mM KCl, pH 7.2). The black line for R-GECO1 is a curve fitted to data reported previously [5], with $K_d = 482 \text{ nM}$ and Hill slope = 2.06.

mutagenesis on LAR-GECO0.1 and LAR-GECO0.2, followed by a screen for colonies with high intensities of red fluorescence. Selected protein variants were extracted from bacterial cultures and tested for both the magnitude of their response to Ca^{2+} as well as their K_d for binding Ca^{2+} . Three to five functional variants with bright red fluorescence and $K_d \sim 10 \mu\text{M}$ or higher were then used as templates for the next round of directed evolution. These efforts led to the identification of LAR-GECO1 (derived from LAR-GECO0.1) with seven mutations compared with R-GECO1, a K_d for Ca^{2+} of $24 \mu\text{M}$ and a 10-fold increase in fluorescence intensity upon binding to Ca^{2+} (dynamic range), and LAR-GECO1.2 (derived from LAR-GECO0.2) with four mutations compared with R-GECO1.2, a K_d for Ca^{2+} of $12 \mu\text{M}$, and a dynamic range of 8.7 (Figure 1B, Table 1, Supplementary Figure S2 and Supplementary Table S1).

With a K_d for Ca^{2+} of $24 \mu\text{M}$, we reasoned that LAR-GECO1 might be more suitable for detecting the Ca^{2+} dynamics within the ER. To test whether the orthogonal CaM–M13 pair

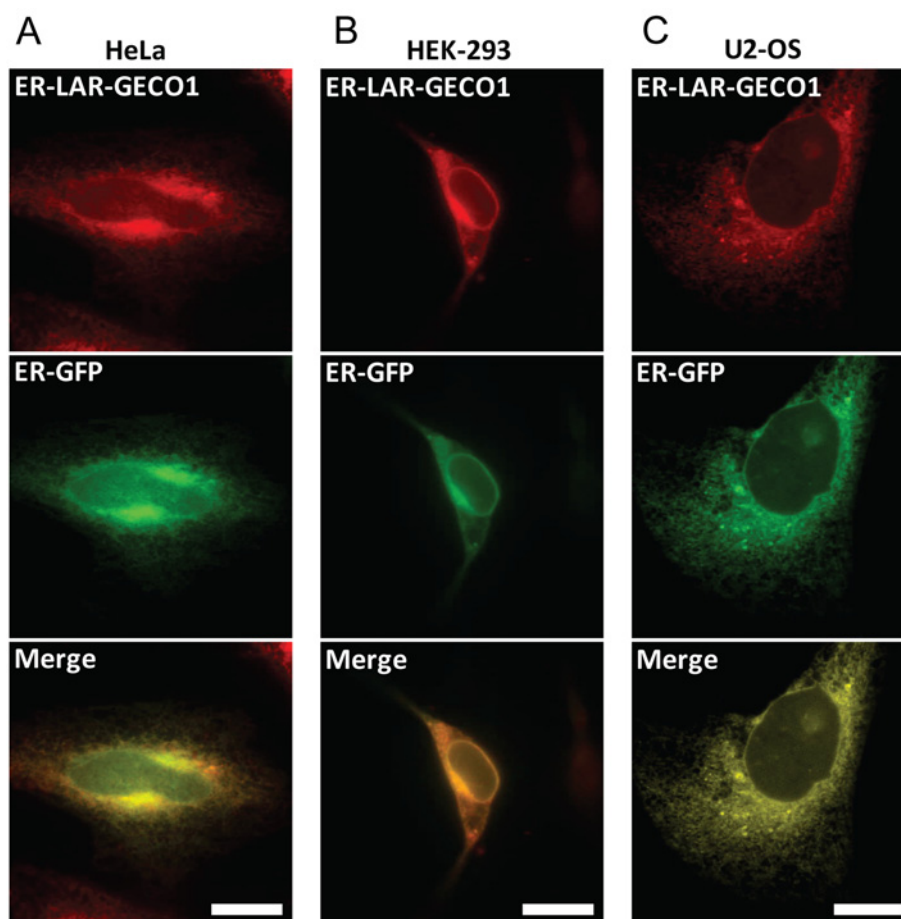
Table 1 Properties of new GECOs described in the present paper

Protein	Ca ²⁺	λ_{abs} (nm) with ϵ (mM ⁻¹ .cm ⁻¹) in parentheses	λ_{em} with Φ in parentheses	Brightness* (mM ⁻¹ .cm ⁻¹)	pK _a	Intensity change‡ ± Ca ²⁺	K _d for Ca ²⁺ (μM) with Hill coefficient in parentheses
LAR-GECO1	–	574 (5.3)	598 (0.13)	0.69	8.6	10×	24 (1.3)
	+	561 (35.8)	589 (0.20)	7.2	5.4/8.8†		
LAR-GECO1.2	–	570 (3.6)	594 (0.18)	0.65	9.0	8.7×	12 (1.4)
	+	557 (16.5)	584 (0.34)	5.6	5.8/8.9†		

*Brightness is defined as the product of ϵ and Φ .

†In the Ca²⁺-bound state, both LAR-GECO1 and LAR-GECO1.2 show a biphasic effect of pH.

‡Intensity change is measured in 30 mM Mops and 100 mM KCl, pH 7.2, with or without Ca²⁺.

**Figure 2** Co-localization of ER-LAR-GECO1 and ER-GFP

(A) A HeLa cell, (B) a HEK-293 cell and (C) a U2-OS cell co-expressing ER-LAR-GECO1 and the ER marker ER-GFP [32]. Scale bars = 20 μm.

in LAR-GECO1 circumvents the problem of low fluorescence within the ER that we observed for ER-R-GECO1 and ER-R-GECO1.2 (Supplementary Figure S1), an ER-targeted LAR-GECO1 (henceforth termed ER-LAR-GECO1) was generated by fusing it to ER-targeting [23] and ER-retention sequences [24], and was co-expressed with an ER marker (an ER-targeted GFP [32], henceforth termed ER-GFP) in HeLa, HEK-293 and U2-OS cells. Co-expression of ER-LAR-GECO1 and ER-GFP in these three cell lines showed correct ER co-localization (Figure 2). Furthermore, when expressed in HeLa cells, ER-LAR-GECO1 showed significantly higher fluorescence intensity compared with ER-R-GECO1 and ER-R-GECO1.2 (Supplementary Figure

S1B), which suggests that the orthogonal CaM–M13 pair in LAR-GECO1 has circumvented its potential interactions with the endogenous proteins.

***In vitro* characterization of LAR-GECO1 and LAR-GECO1.2**

Systematic *in vitro* characterization of LAR-GECO1 and LAR-GECO1.2 revealed that both proteins had spectral properties similar to their progenitors R-GECO1 and R-GECO1.2, respectively (Table 1 and Supplementary Figures S3A–S3D). In addition, LAR-GECO1 and LAR-GECO1.2 exhibit monophasic pH dependencies with apparent pK_a values of 8.6 and 9.0

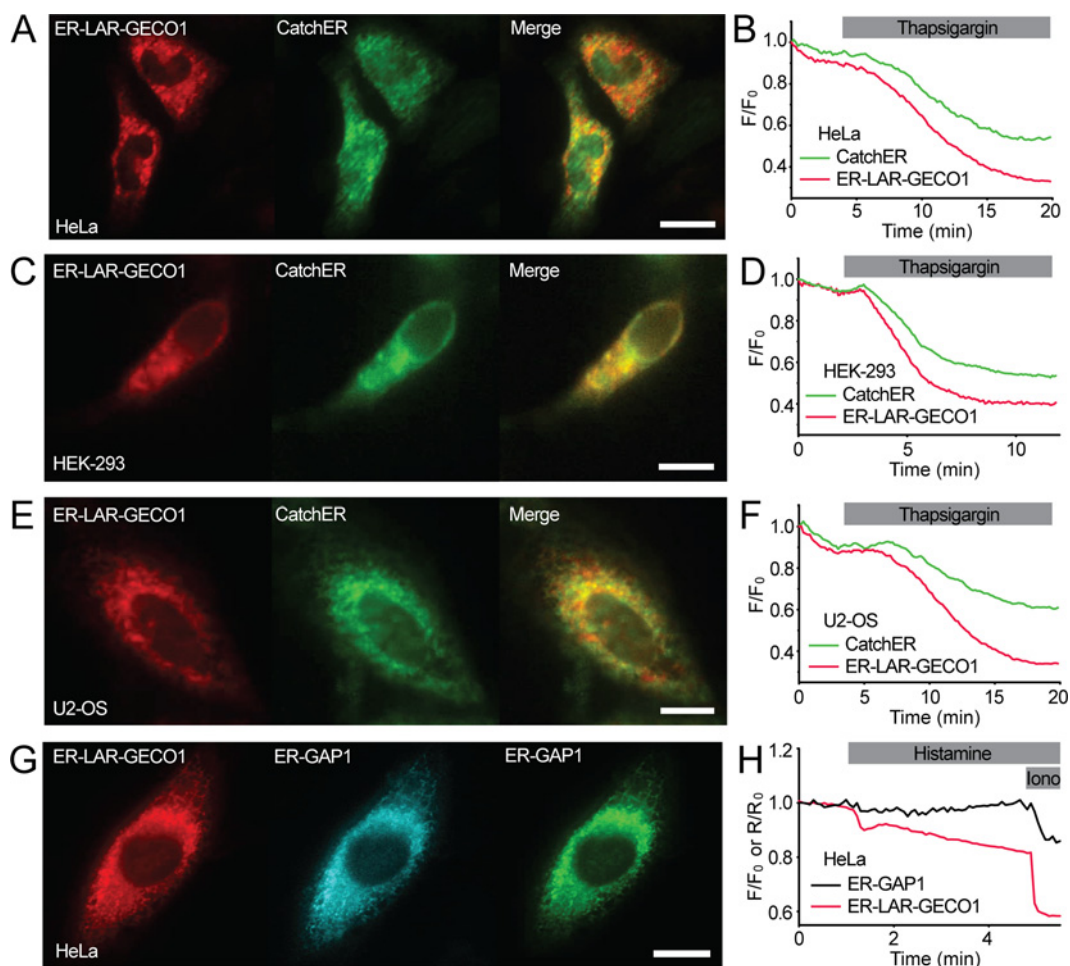


Figure 3 Comparison of ER-LAR-GECO1, CatchER and ER-GAP1 for sensing Ca^{2+} concentration changes within the ER

(A) HeLa cells, (C) a HEK-293 cell and (E) a U2-OS cell co-expressing ER-LAR-GECO1 (red) and CatchER (green). Scale bar = 20 μm . (B, D and F) Effects of depleting the ER of Ca^{2+} by addition of thapsigargin (10 μM) on the fluorescence intensities of ER-LAR-GECO1 (red line) and CatchER (green line) co-expressed in a HeLa cell, a HEK-293 cell and a U2-OS cell as shown in (A), (C) and (E), respectively. Traces show results from single cells, typical of at least four similar recordings. (G) A HeLa cell co-expressing ER-LAR-GECO1 (red) and ER-GAP1 (blue, 395 nm excitation; green, 488 nm excitation). Scale bar = 20 μm . (H) Effects of the release of ER Ca^{2+} evoked by histamine (100 μM) and ionomycin (Iono, 10 μM) on the fluorescence intensity of ER-LAR-GECO1 (F/F_0) and the ratiometric fluorescence response of ER-GAP1 (R/R_0) co-expressed in a HeLa cell. Traces are from a single cell, typical of at least four similar recordings.

respectively in the Ca^{2+} -free state. In the Ca^{2+} -bound state, both proteins exhibited a biphasic pH dependence with apparent pK_a values of 5.4/8.8 and 5.8/8.9 respectively (Table 1, and Supplementary Figures S3E and S3F). As a result, both of these Ca^{2+} indicators show large fluorescence changes in response to binding Ca^{2+} at pH values between 6.5 and 8.5, which covers the physiological pH range of the mitochondria and ER.

The decreased Ca^{2+} affinity of LAR-GECO1 (24 μM) compared with its progenitor, R-GECO1 (0.48 μM), is mainly attributed to the D4 mutations (V51W, F395A, V411A and L415I) as they create a new complementary 'bump-and-hole' interaction between M13 and CaM [12]. In LAR-GECO1.2, we attribute the 10-fold decrease in Ca^{2+} affinity (from 1.2 μM to 12 μM) to the single mutation, A47R, as the bulky and hydrophilic Arg⁴⁷ probably perturbs the interactions originally present between the side chain of Ala⁴⁷ and the hydrophobic pocket formed by Phe³⁹⁵, Met⁴¹² and Leu⁴¹⁵ from the third EF-hand of CaM.

Comparisons of LAR-GECO1 with other low-affinity Ca^{2+} indicators

We compared LAR-GECO1 with the other low-affinity Ca^{2+} indicators, CatchER [20], GAP1 [21] and D1ER [11], in terms

of their utility for imaging Ca^{2+} dynamics within the ER of cultured human cells. First, we compared the performance of ER-LAR-GECO1 (red fluorescent) to CatchER (green fluorescent) by two-colour fluorescence imaging of HeLa, HEK-293 and U2-OS cells (Figures 3A–3F) co-transfected with plasmids encoding each of the indicators. Upon treatment with thapsigargin, which inhibits Ca^{2+} uptake into the ER, we observed decreases in the fluorescence intensity of both CatchER and ER-LAR-GECO1 in all three cell lines. The fractional decreases in fluorescence intensity were greater for ER-LAR-GECO1 than for CatchER co-expressed in the same cells (Figures 3B, 3D and 3F). The mean values for the fractional decreases in fluorescence intensity of ER-LAR-GECO1 after addition of thapsigargin to HeLa, U2-OS and HEK-293 cells were 0.46 ± 0.07 , 0.56 ± 0.05 and 0.58 ± 0.08 , respectively. For CatchER, the values were 0.23 ± 0.06 , 0.25 ± 0.05 and 0.50 ± 0.09 , respectively ($n = 4$ –9 cells, from three to four fields; $P < 0.05$ for HeLa and U2-OS cells).

Next, we compared the responses of ER-LAR-GECO1 with those of ER-GAP1 [21] by co-transfecting HeLa cells with plasmids encoding each Ca^{2+} indicator (Figures 3G and 3H). HeLa cells co-expressing both indicators were treated with

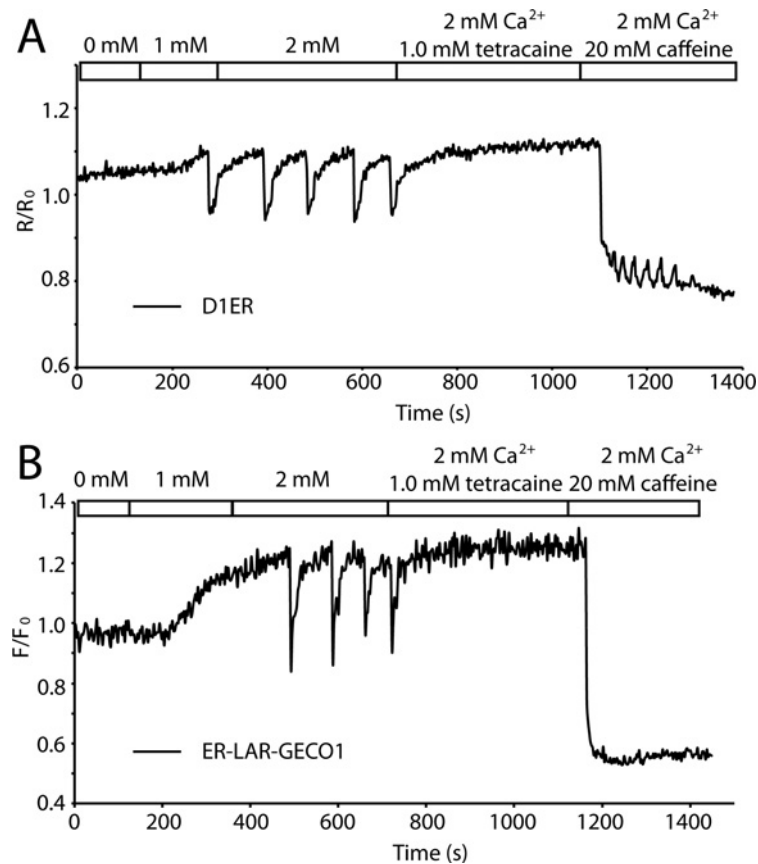


Figure 4 Comparison of ER-LAR-GECO1 and D1ER for measuring SOICR

Change of fluorescence ratio (A) and intensity (B) in HEK-293 cells expressing D1ER (A) and ER-LAR-GECO1 (B) when the concentration of extracellular Ca²⁺ was changed from 0.0 mM to 2.0 mM to induce SOICR. Caffeine (20 mM) was added to induce release of Ca²⁺ from the ER.

histamine to stimulate IP₃-mediated release of Ca²⁺ from intracellular stores, followed by ionomycin to completely deplete intracellular stores of Ca²⁺. In response to histamine, ER-LAR-GECO1 showed fractional decreases in fluorescence intensity (0.08 ± 0.002 , $n = 4$) that were significantly ($P < 0.05$) greater than the fractional changes in the ratiometric response of ER-GAP1 (0.02 ± 0.007 , $n = 4$), for which the changes were undetectable in some cells (Figure 3H). The fractional changes evoked by subsequent addition of ionomycin to empty ER Ca²⁺ stores were also significantly larger for ER-LAR-GECO1 (0.27 ± 0.01) than for ER-GAP1 (0.13 ± 0.007 ; $n = 4$; $P < 0.05$) (Figure 3H). This suggests that ER-LAR-GECO1 has greater sensitivity than ER-GAP1 for detecting changes in the concentration of Ca²⁺ within the ER.

Lastly, we compared ER-LAR-GECO1 with a cameleon-type low-affinity Ca²⁺ indicator, D1ER [11], for measuring store overload-induced Ca²⁺ release (SOICR). HEK-293 cells stably expressing RyR2 were transiently transfected with ER-LAR-GECO1 and D1ER. By increasing the extracellular Ca²⁺ concentration (from 0.0 to 2.0 mM), we observed SOICR as decreases in the YFP/CFP emission ratio of D1ER (Figure 4A) or the fluorescence intensity of ER-LAR-GECO1 (Figure 4B). During SOICR, D1ER showed transient decreases in emission ratio of $37 \pm 1\%$ ($n = 64$) (Figure 4A) compared with decreases of $39 \pm 1\%$ ($n = 72$) in the fluorescence intensity of ER-LAR-GECO1 (Figure 4B). Overall, ER-LAR-GECO1 showed comparable performance with that of D1ER in monitoring ER luminal Ca²⁺ in RyR2-expressing HEK-293 cells.

Imaging mitochondrial Ca²⁺ dynamics in neurons with LAR-GECO1.2

In neurons, mitochondria buffer Ca²⁺ influx during excitation, taking up Ca²⁺ via the Ca²⁺ uniporter and then releasing Ca²⁺ back into the cytosol via Na⁺/Ca²⁺ and H⁺/Ca²⁺ exchangers. This buffering results in transient elevations of [Ca²⁺]_{mt} during neuronal activity [33,34]. These mitochondrial Ca²⁺ signals play important roles in ATP synthesis, neuronal plasticity and survival [35–37]. To determine whether LAR-GECO1.2 could be used to image these activity-dependent mitochondrial Ca²⁺ elevations in neurons, we imaged cultured peripheral and central neurons using a mitochondrially targeted form of the indicator, mito-LAR-GECO1.2 (Figure 5). DRG sensory neurons were depolarized by application of high concentrations of K⁺ (15 mM, 20 mM, 30 mM or 50 mM extracellular KCl for 30 s), and the fluorescence of mito-LAR-GECO1.2 and fura-2 were used to simultaneously measure [Ca²⁺]_{mt} and the cytosolic Ca²⁺ concentration [Ca²⁺]_i, respectively. The results showed that depolarization evoked coincident and rapidly reversible increases in [Ca²⁺]_{mt} and [Ca²⁺]_i (Figure 5B). Treatment with an inhibitor of the mitochondrial Na⁺/Ca²⁺ exchanger, CGP37157 (10 μM), slowed the recovery of the increase in [Ca²⁺]_{mt}, and this effect was reversible (Figure 5B). In hippocampal neurons, KCl-evoked depolarization or application of glutamate also produced elevations of [Ca²⁺]_i and [Ca²⁺]_{mt}, although the amplitudes of the increases in [Ca²⁺]_{mt} were smaller than those produced by similar stimuli in DRG neurons (Figure 5D). These observations using

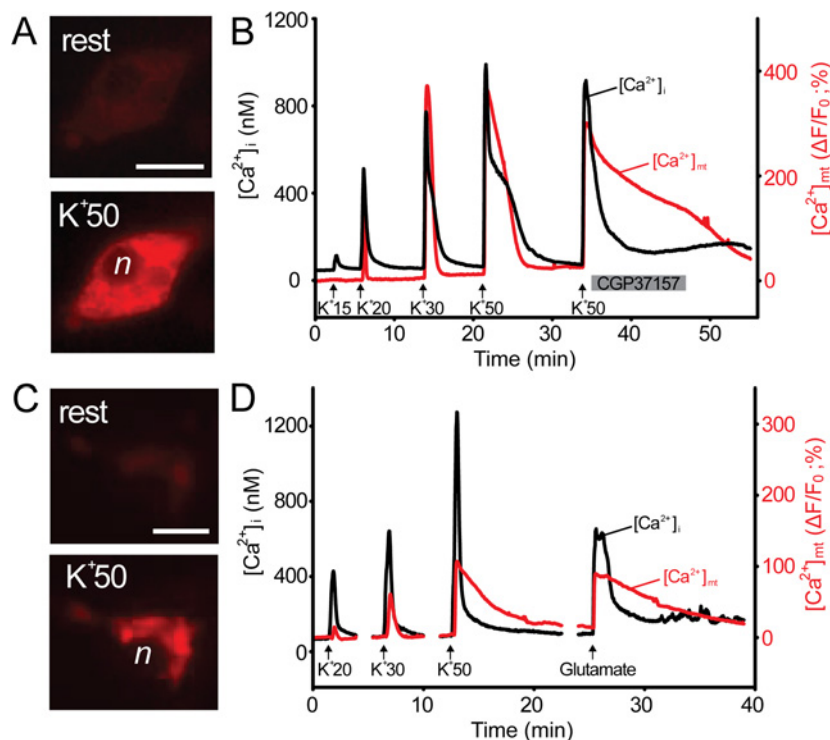


Figure 5 LAR-GECO1.2 for imaging mitochondrial Ca^{2+} in DRG and hippocampal neurons

(A) Images show mito-LAR-GECO1.2 fluorescence in a DRG neuron from which recordings were made under resting conditions (top) and at the peak of the $[\text{Ca}^{2+}]_{\text{mt}}$ response to 50 mM extracellular K^+ (bottom; n = nucleus), scale bar = 20 μm . (B) DRG sensory neurons were transfected with a mitochondrially targeted form of LAR-GECO1.2 (mito-LAR-GECO1.2), and subsequently loaded with fura 2 to enable simultaneous measurements of Ca^{2+} concentrations within mitochondria ($[\text{Ca}^{2+}]_{\text{mt}}$; red trace) and cytosol ($[\text{Ca}^{2+}]_{\text{i}}$; black trace). DRG neurons were depolarized using 15 mM, 20 mM, 30 mM and 50 mM KCl (30 s) in extracellular solution (vertical arrows). The inhibitor of mitochondrial $\text{Na}^+/\text{Ca}^{2+}$ exchange, CGP37157 (10 μM), reversibly inhibited extrusion of Ca^{2+} from mitochondria (red) and eliminated the $[\text{Ca}^{2+}]_{\text{i}}$ plateau that immediately followed the peak rise in $[\text{Ca}^{2+}]_{\text{i}}$ in control cells. (C) Images show mito-LAR-GECO1.2 fluorescence in a hippocampal neuron from which recordings were made in the resting state (top) and at the peak elevation of $[\text{Ca}^{2+}]_{\text{mt}}$ induced by 50 mM extracellular K^+ (bottom; n = nucleus), scale bar = 10 μm . (D) Simultaneous imaging of cytosolic ($[\text{Ca}^{2+}]_{\text{i}}$, black) and mitochondrial ($[\text{Ca}^{2+}]_{\text{mt}}$, red) concentrations of Ca^{2+} in mouse hippocampal neurons using fura 2 and mito-LAR-GECO1.2, respectively. Elevation of $[\text{Ca}^{2+}]_{\text{i}}$ and $[\text{Ca}^{2+}]_{\text{mt}}$ were induced by 30-s depolarizations evoked by KCl (20 mM, 30 mM or 50 mM) or 100 μM glutamate (+ 10 μM glycine); 200 nM tetrodotoxin was present throughout the recordings to block action potentials.

mito-LAR-GECO1.2 are consistent with the known properties of mitochondrial Ca^{2+} transport in neurons [33,36,38].

Dual-colour imaging of cytosolic and ER luminal Ca^{2+} using ER-LAR-GECO1

To explore the possibility of using LAR-GECO1 and a green fluorescent indicator for dual-colour imaging of Ca^{2+} dynamics within the cytosol and ER lumen, we co-expressed a green cytosolic Ca^{2+} indicator, GCaMP3 [39] (henceforth termed Cyto-GCaMP3), and ER-LAR-GECO1 in cells. Upon stimulation with histamine, we observed oscillatory increases in the fluorescence of Cyto-GCaMP3 that were coincident with oscillatory decreases in the fluorescence of ER-LAR-GECO1 (Figure 6). These results demonstrate that the indicators can report oscillatory release of Ca^{2+} from the ER into the cytosol. We also co-expressed ER-LAR-GECO1 with another cytosolic green Ca^{2+} indicator, G-GECO1.1 [5] (henceforth termed Cyto-G-GECO1.1) in HeLa, HEK-293 and U2-OS cells respectively. In all three cell lines, ER-LAR-GECO1 reported changes in the concentration of Ca^{2+} within the ER that showed close temporal coincidence with opposing changes in the cytosolic Ca^{2+} signals reported by Cyto-G-GECO1.1 (Supplementary Figure S4). In most cells, the fluorescence intensity of ER-LAR-GECO1 declined transiently and then recovered, mirroring the

time course of the cytosolic Ca^{2+} signals reported by Cyto-G-GECO1.1 (Supplementary Figures S4D–S4F). The recovery of the fluorescence intensity of ER-LAR-GECO1 was observed in nominally Ca^{2+} -free medium (Supplementary Figures S4G–S4I) and it was inhibited by thapsigargin (Supplementary Figures S4J–S4L). These observations are consistent with re-uptake of Ca^{2+} from the cytosol occurring via the sarcoplasmic/endoplasmic reticulum Ca^{2+} -ATPase (SERCA).

Conclusion

By utilizing rational design and directed evolution, we have developed two low-affinity red fluorescent Ca^{2+} indicators, LAR-GECO1 and LAR-GECO1.2, with K_d values for binding to Ca^{2+} of 24 μM and 12 μM respectively. These indicators enable robust detection of Ca^{2+} dynamics in organelles containing relatively high Ca^{2+} concentrations, as we demonstrate for the mitochondria in primary neurons and the ER in cultured human cells. Furthermore, comparisons of LAR-GECO1 with other FP-based low-affinity Ca^{2+} indicators demonstrate that LAR-GECO1 is a sensitive single-wavelength Ca^{2+} indicator for detecting Ca^{2+} dynamics within the ER of mammalian cells. In addition, LAR-GECO1 enables simultaneous dual-colour imaging with GFP-based fluorescent probes.

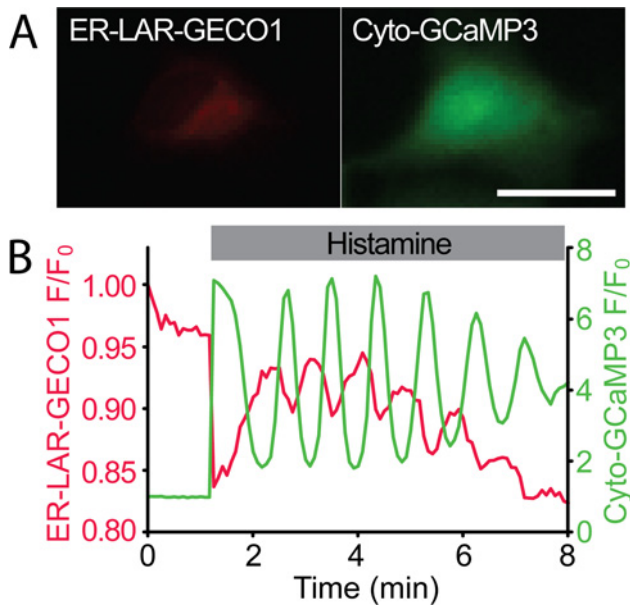


Figure 6 Dual-colour imaging of cytosolic and ER luminal Ca²⁺ using ER-LAR-GECO1 and Cyto-GCaMP3

(A) A HeLa cell co-expressing ER-LAR-GECO1 (left panel) and Cyto-GCaMP3 (right panel). Images correspond to the time of maximal increase in the fluorescence intensity of Cyto-GCaMP3 after treatment with histamine (100 μ M). Scale bar = 20 μ m. (B) Changes of the fluorescence intensities of ER-LAR-GECO1 (red trace) and Cyto-GCaMP3 (green trace) in a HeLa cell upon treatment with histamine (100 μ M). This trace is representative of at least five similar recordings.

AUTHOR CONTRIBUTIONS

Jiahui Wu performed rational design of LAR-GECO1 and LAR-GECO1.2, directed evolution of LAR-GECO1.2 and imaging of ER-LAR-GECO1 and GCaMP3 in HeLa cells. David L. Prole performed imaging of ER-LAR-GECO1 in conjunction with ER-GFP, CatchER, ER-GAP1 and Cyto-G-GECO1.1. Yi Shen performed directed evolution of LAR-GECO1. Zhihong Lin and Aswini Gnanasekaran carried out simultaneous measurements of cytosolic and mitochondrial Ca²⁺ in neurons. Yingjie Liu performed imaging of LAR-GECO1 and D1ER in HEK-293 cells. Lidong Chen and Hang Zhou performed protein purification and *in vitro* characterization. Jiahui Wu, Robert E. Campbell, Yuriy M. Usachev, David L. Prole, Colin W. Taylor and S.R. Wayne Chen directed research and devised experiments. Jiahui Wu, David L. Prole, Yuriy M. Usachev, Colin W. Taylor and Robert E. Campbell wrote the manuscript.

ACKNOWLEDGEMENTS

We thank the University of Alberta Molecular Biology Services Unit for technical support, V.J. Allan (University of Manchester, Manchester, U.K.) for sharing the GFP-ER plasmid, J.J. Yang (Georgia State University, USA) for sharing the CatchER plasmid, M.T. Alonso (University of Valladolid, Valladolid, Spain) for sharing the ER-GAP1 construct and L.L. Looger (Howard Hughes Medical Institute, Ashburn, VA, U.S.A.) for GCaMP3 cDNA.

FUNDING

This work was supported by the Natural Sciences and Engineering Research Council of Canada (to R.E.C.), the Canadian Institutes of Health Research (to R.E.C. and S.R.W.C.), Alberta Ingenuity (scholarship to Y.S.), the National Institutes of Health (USA) [grant number NS087068 (to Y.M.U.)], the Biotechnology and Biological Sciences Research Council [grant number L0000075 (to C.W.T.)] and the Wellcome Trust [grant number 101844 (to C.W.T.)]. R.E.C. holds a Tier II Canada Research Chair.

REFERENCES

- Berridge, M. J., Lipp, P. and Bootman, M. D. (2000) The versatility and universality of calcium signalling. *Nat. Rev. Mol. Cell Biol.* **1**, 11–21 [CrossRef PubMed](#)

- Miyawaki, A., Llopis, J., Heim, R., McCaffery, J. M., Adams, J. A., Ikura, M. and Tsien, R. Y. (1997) Fluorescent indicators for Ca²⁺ based on green fluorescent proteins and calmodulin. *Nature* **388**, 882–887 [CrossRef PubMed](#)
- Nagai, T., Sawano, A., Park, E. S. and Miyawaki, A. (2001) Circularly permuted green fluorescent proteins engineered to sense Ca²⁺. *Proc. Natl. Acad. Sci. U.S.A.* **98**, 3197–3202 [CrossRef PubMed](#)
- Nakai, J., Ohkura, M. and Imoto, K. (2001) A high signal-to-noise Ca²⁺ probe composed of a single green fluorescent protein. *Nat. Biotechnol.* **19**, 137–141 [CrossRef PubMed](#)
- Zhao, Y., Araki, S., Wu, J., Teramoto, T., Chang, Y.-F., Nakano, M., Abdelfattah, A. S., Fujiwara, M., Ishihara, T., Nagai, T. et al. (2011) An expanded palette of genetically encoded Ca²⁺ indicators. *Science* **333**, 1888–1891 [CrossRef PubMed](#)
- Wu, J., Liu, L., Matsuda, T., Zhao, Y., Rebane, A., Drobnizhev, M., Chang, Y.-F., Araki, S., Arai, Y., March, K. et al. (2013) Improved orange and red Ca²⁺ indicators and photophysical considerations for optogenetic applications. *ACS Chem. Neurosci.* **4**, 963–972 [CrossRef PubMed](#)
- Hoi, H., Matsuda, T., Nagai, T. and Campbell, R. E. (2012) Highlightable Ca²⁺ indicators for live cell imaging. *J. Am. Chem. Soc.* **135**, 46–49 [CrossRef PubMed](#)
- Akerboom, J., Carreras Calderón, N., Tian, L., Wabnig, S., Prigge, M., Toló, J., Gordus, A., Orger, M. B., Severi, K. E., Macklin, J. J. et al. (2013) Genetically encoded calcium indicators for multi-color neural activity imaging and combination with optogenetics. *Front. Mol. Neurosci.* **6**, 2 [CrossRef PubMed](#)
- Carlson, H. J. and Campbell, R. E. (2013) Circularly permuted red fluorescent proteins and calcium ion indicators based on mCherry. *Protein Eng. Des. Sel.* **26**, 763–772 [CrossRef PubMed](#)
- Horikawa, K., Yamada, Y., Matsuda, T., Kobayashi, K., Hashimoto, M., Matsu-ura, T., Miyawaki, A., Michikawa, T., Mikoshiba, K. and Nagai, T. (2010) Spontaneous network activity visualized by ultrasensitive Ca²⁺ indicators, yellow Cameleon-Nano. *Nat. Methods* **7**, 729–732 [CrossRef PubMed](#)
- Palmer, A. E., Jin, C., Reed, J. C. and Tsien, R. Y. (2004) Bcl-2-mediated alterations in endoplasmic reticulum Ca²⁺ analyzed with an improved genetically encoded fluorescent sensor. *Proc. Natl. Acad. Sci. U.S.A.* **101**, 17404–17409 [CrossRef PubMed](#)
- Palmer, A. E., Giacomello, M., Kortemme, T., Hires, S. A., Lev-Ram, V., Baker, D. and Tsien, R. Y. (2006) Ca²⁺ indicators based on computationally redesigned calmodulin-peptide pairs. *Chem. Biol.* **13**, 521–530 [CrossRef PubMed](#)
- Palmer, A. E. and Tsien, R. Y. (2006) Measuring calcium signaling using genetically targetable fluorescent indicators. *Nat. Protoc.* **1**, 1057–1065 [CrossRef PubMed](#)
- Rudolf, R., Magalhães, P. J. and Pozzan, T. (2006) Direct *in vivo* monitoring of sarcoplasmic reticulum Ca²⁺ and cytosolic cAMP dynamics in mouse skeletal muscle. *J. Cell Biol.* **173**, 187–93 [CrossRef PubMed](#)
- Sobie, E. A. and Lederer, W. J. (2012) Dynamic local changes in sarcoplasmic reticulum calcium: physiological and pathophysiological roles. *J. Mol. Cell. Cardiol.* **52**, 304–311 [CrossRef PubMed](#)
- Burdakov, D., Petersen, O. H. and Verkhratsky, A. (2005) Intraluminal calcium as a primary regulator of endoplasmic reticulum function. *Cell Calcium* **38**, 303–310 [CrossRef PubMed](#)
- Demaurex, N. and Distelhorst, C. (2003) Apoptosis—the calcium connection. *Science* **300**, 65–67 [CrossRef PubMed](#)
- Arnaudeau, S., Kelley, W. L., Walsh, J. V. and Demareux, N. (2001) Mitochondria recycle Ca²⁺ to the endoplasmic reticulum and prevent the depletion of neighboring endoplasmic reticulum regions. *J. Biol. Chem.* **276**, 29430–29439 [CrossRef PubMed](#)
- Csordás, G., Várnai, P., Golenár, T., Roy, S., Purkins, G., Schneider, T. G., Balla, T. and Hajnóczky, G. (2010) Imaging interorganelle contacts and local calcium dynamics at the ER-mitochondrial interface. *Mol. Cell* **39**, 121–132 [CrossRef PubMed](#)
- Tang, S., Wong, H.-C., Wang, Z.-M., Huang, Y., Zou, J., Zhuo, Y., Pennati, A., Gadda, G., Delbono, O. and Yang, J. J. (2011) Design and application of a class of sensors to monitor Ca²⁺ dynamics in high Ca²⁺ concentration cellular compartments. *Proc. Natl. Acad. Sci. U.S.A.* **108**, 16265–16270 [CrossRef PubMed](#)
- Rodríguez-García, A., Rojo-Ruiz, J., Navas-Navarro, P., Aulestia, F. J., Gallego-Sandin, S., García-Sancho, J. and Alonso, M. T. (2014) GAP, an aequorin-based fluorescent indicator for imaging Ca²⁺ in organelles. *Proc. Natl. Acad. Sci. U.S.A.* **111**, 2584–2589 [CrossRef PubMed](#)
- Cirino, P., Mayer, K. and Umeno, D. (2003) Generating mutant libraries using error-prone PCR. In *Directed Evolution Library Creation* (Arnold, F. H. and Georgiou, G., eds), pp. 3–9. Humana Press, Totowa [CrossRef](#)
- Fliegel, L., Burns, K., MacLennan, D. H., Reithmeier, R. A. and Michalak, M. (1989) Molecular cloning of the high affinity calcium-binding protein (calreticulin) of skeletal muscle sarcoplasmic reticulum. *J. Biol. Chem.* **264**, 21522–21528 [PubMed](#)
- Kendall, J. M., Dormer, R. L. and Campbell, A. K. (1992) Targeting aequorin to the endoplasmic reticulum of living cells. *Biochem. Biophys. Res. Commun.* **189**, 1008–1016 [CrossRef PubMed](#)

- 25 Cheng, Z. and Campbell, R. E. (2006) Assessing the structural stability of designed β -hairpin peptides in the cytoplasm of live cells. *ChemBioChem* **7**, 1147–1150 [CrossRef PubMed](#)
- 26 Shaner, N. C., Campbell, R. E., Steinbach, P. A., Giepmans, B. N., Palmer, A. E. and Tsien, R. Y. (2004) Improved monomeric red, orange and yellow fluorescent proteins derived from *Discosoma* sp. red fluorescent protein. *Nat. Biotechnol.* **22**, 1567–1572 [CrossRef PubMed](#)
- 27 Ulrich, J. D., Kim, M.-S., Houlihan, P. R., Shutov, L. P., Mohapatra, D. P., Strack, S. and Usachev, Y. M. (2012) Distinct activation properties of the nuclear factor of activated T-cells (NFAT) isoforms NFATc3 and NFATc4 in neurons. *J. Biol. Chem.* **287**, 37594–37609 [CrossRef PubMed](#)
- 28 Schnizler, K., Shutov, L. P., Van Kanegan, M. J., Merrill, M. A., Nichols, B., McKnight, G. S., Strack, S., Hell, J. W. and Usachev, Y. M. (2008) Protein kinase A anchoring via AKAP150 is essential for TRPV1 modulation by forskolin and prostaglandin E2 in mouse sensory neurons. *J. Neurosci.* **28**, 4904–4917 [CrossRef PubMed](#)
- 29 Hasan, M. T., Friedrich, R. W., Euler, T., Larkum, M. E., Giese, G., Both, M., Duebel, J., Waters, J., Bujard, H., Griesbeck, O. et al. (2004) Functional fluorescent Ca^{2+} indicator proteins in transgenic mice under TET control. *PLoS Biol.* **2**, e163 [CrossRef PubMed](#)
- 30 Heim, N. and Griesbeck, O. (2004) Genetically encoded indicators of cellular calcium dynamics based on Troponin C and green fluorescent protein. *J. Biol. Chem.* **279**, 14280–14286 [CrossRef PubMed](#)
- 31 Wang, Q., Shui, B., Kotlikoff, M. I. and Sondermann, H. (2008) Structural basis for calcium sensing by GCaMP2. *Structure* **16**, 1817–1827 [CrossRef PubMed](#)
- 32 Woźniak, M. J., Bola, B., Brownhill, K., Yang, Y.-C., Levakova, V. and Allan, V. J. (2009) Role of kinesin-1 and cytoplasmic dynein in endoplasmic reticulum movement in VERO cells. *J. Cell Sci.* **122**, 1979–1989 [CrossRef PubMed](#)
- 33 Thayer, S. A., Usachev, Y. M. and Pottorf, W. J. (2002) Modulating Ca^{2+} clearance from neurons. *Front. Biosci.* **7**, d1255–d1279 [CrossRef PubMed](#)
- 34 Marchi, S. and Pinton, P. (2014) The mitochondrial calcium uniporter complex: molecular components, structure and physiopathological implications. *J. Physiol.* **592**, 829–839 [CrossRef PubMed](#)
- 35 Mattson, M. P., Gleichmann, M. and Cheng, A. (2008) Mitochondria in neuroplasticity and neurological disorders. *Neuron* **60**, 748–766 [CrossRef PubMed](#)
- 36 Nicholls, D. G. and Budd, S. L. (2000) Mitochondria and neuronal survival. *Physiol. Rev.* **80**, 315–360 [PubMed](#)
- 37 Rizzuto, R., De Stefani, D., Raffaello, A. and Mammucari, C. (2012) Mitochondria as sensors and regulators of calcium signalling. *Nat. Rev. Mol. Cell Biol.* **13**, 566–578 [CrossRef PubMed](#)
- 38 Friel, D. D. (2000) Mitochondria as regulators of stimulus-evoked calcium signals in neurons. *Cell Calcium* **28**, 307–316 [CrossRef PubMed](#)
- 39 Tian, L., Hires, S. A., Mao, T., Huber, D., Chiappe, M. E., Chalasani, S. H., Petreanu, L., Akerboom, J., McKinney, S. A., Schreiner, E. R. et al. (2009) Imaging neural activity in worms, flies and mice with improved GCaMP calcium indicators. *Nat. Methods* **6**, 875–881 [CrossRef PubMed](#)

Received 4 August 2014; accepted 28 August 2014

Published as BJ Immediate Publication 28 August 2014, doi:10.1042/BJ20140931

SUPPLEMENTARY ONLINE DATA

Red fluorescent genetically encoded Ca²⁺ indicators for use in mitochondria and endoplasmic reticulum

Jiahui WU^{*}, David L. PROLE[†], Yi SHEN^{*}, Zhihong LIN[‡], Aswini GNANASEKARAN[‡], Yingjie LIU[§], Lidong CHEN^{*}, Hang ZHOU^{*}, S.R. Wayne CHEN^{§||}, Yuriy M. USACHEV[‡], Colin W. TAYLOR[†] and Robert E. CAMPBELL^{*1}

^{*}Department of Chemistry, University of Alberta, Edmonton, Alberta T6G 2G2, Canada

[†]Department of Pharmacology, University of Cambridge, Cambridge CB2 1PD, UK

[‡]Department of Pharmacology, University of Iowa Carver College of Medicine, Iowa City, IA 52242, USA

[§]Department of Physiology and Pharmacology, Libin Cardiovascular Institute of Alberta, University of Calgary, Calgary, Alberta, T2N 4N1, Canada

^{||}Department of Biochemistry and Molecular Biology, Libin Cardiovascular Institute of Alberta, University of Calgary, Calgary, Alberta, T2N 4N1, Canada

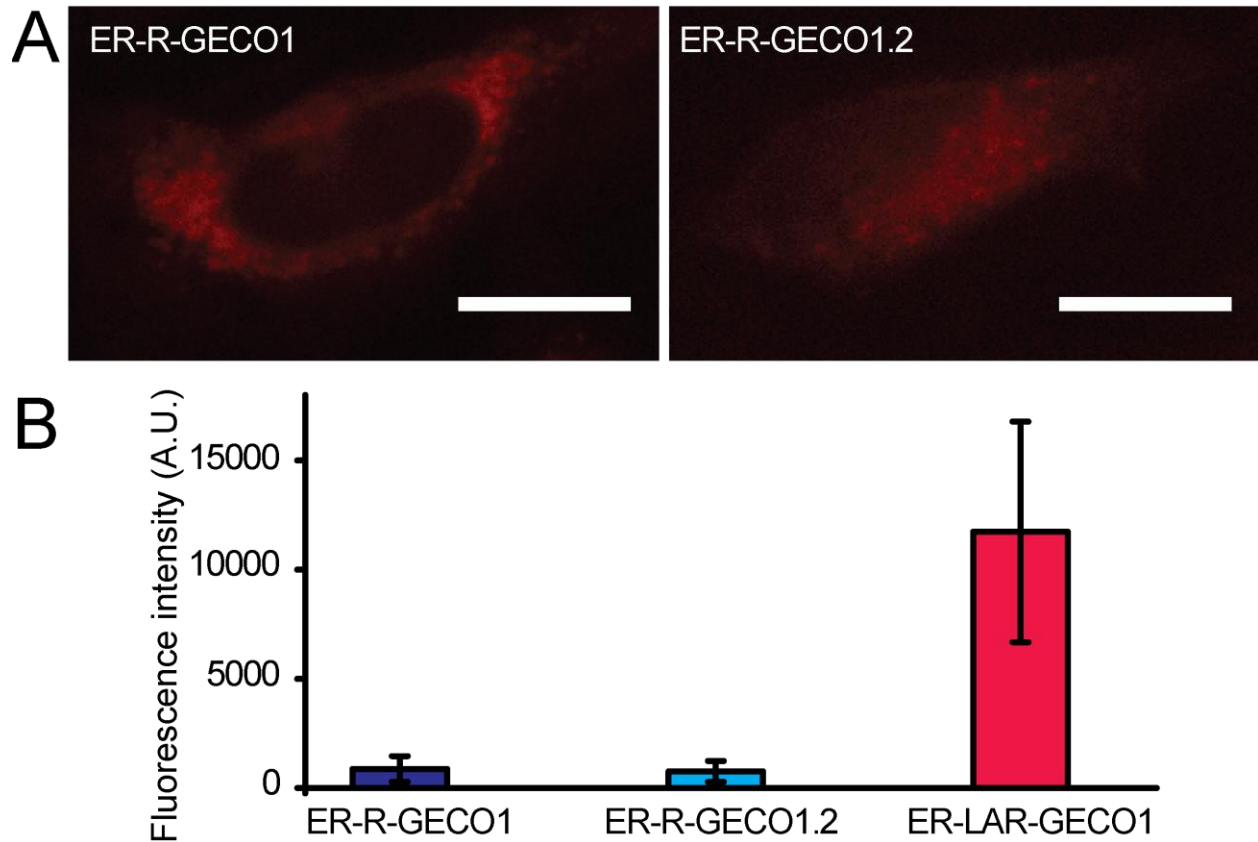


Figure S1 Diminished brightness of R-GECO1 and R-GECO1.2 in the ER of HeLa cells

(A) HeLa cells expressing ER-R-GECO1 (left panel) and ER-R-GECO1.2 (right panel), scale bar = 20 μ m.

(B) Comparison of the red fluorescence intensities of ER-R-GECO1 (n = 67 cells; $p \ll 0.001$), ER-R-GECO1.2 (86 cells; $p \ll 0.001$) and ER-LAR-GECO1 (57 cells) in HeLa cells.

GCaMP #s	39	40	41	42	43	44	45	46	47	48	49	50	51	52	53	54	55	56	57	58	59	60	61	62	63	64	65	66	67	68	69	70	71	72	73	74	75	76	77	78
R-GECO1	S	S	R	R	K	W	N	K	A	G	H	A	V	R	A	I	G	R	L	S	S	P	V	-	V	S	E	R	M	Y	P	E	D	G	A	L	K	S	E	I
LAR-GECO1	S	S	R	R	K	W	N	K	A	G	H	A	W	R	A	I	G	R	L	S	S	P	V	-	V	S	E	R	M	Y	P	E	D	G	A	L	K	S	E	I
R-GECO1.2	S	S	R	R	K	W	N	K	A	G	H	A	V	R	A	I	G	R	L	S	S	P	V	-	V	S	E	R	M	Y	P	E	D	G	A	L	K	S	E	I
LAR-GECO1.2	S	S	R	R	K	W	N	K	A	G	H	A	V	R	A	I	G	R	L	S	S	P	V	-	V	S	E	R	M	Y	P	E	D	G	A	L	K	S	E	I
GCaMP #s	79	80	81	82	83	84	85	86	87	88	89	90	91	92	93	94	95	96	97	98	99	100	101	102	103	104	105	106	107	108	109	110	111	112	113	114	115	116	117	118
R-GECO1	K	K	G	L	R	L	K	D	G	G	H	Y	A	A	-	-	E	V	K	T	T	Y	K	A	K	K	P	V	Q	L	P	G	A	Y	I	V	D	I	K	L
LAR-GECO1	K	K	G	L	R	L	K	D	G	G	H	Y	A	A	-	-	E	V	K	T	T	Y	K	A	K	K	P	V	Q	L	P	G	A	Y	I	V	D	I	K	L
R-GECO1.2	K	K	G	L	R	L	K	D	G	G	H	Y	A	A	-	-	E	V	K	T	T	Y	K	A	K	K	P	V	Q	L	P	G	A	Y	I	V	D	I	K	L
LAR-GECO1.2	K	K	G	L	R	L	K	D	G	G	H	Y	A	A	-	-	E	V	K	T	T	Y	K	A	K	K	P	V	Q	L	P	G	A	Y	I	V	D	I	K	L
GCaMP #s	119	120	121	122	123	124	125	126	127	128	129	130	131	132	133	134	135	136	137	138	139	140	141	142	143	144	145	146	147	148	149	150	151	152	153	154	155	156	157	158
R-GECO1	D	I	V	S	-	H	N	E	D	Y	T	I	V	E	Q	C	E	R	A	E	G	R	H	S	T	G	G	M	D	E	L	Y	K	G	G	T	G	S	L	
LAR-GECO1	D	I	V	S	-	H	N	E	D	Y	T	I	V	E	Q	C	E	R	A	E	G	R	H	S	T	G	G	M	D	E	L	Y	K	G	G	T	G	S	L	
R-GECO1.2	D	I	V	S	-	H	N	E	D	Y	T	I	V	E	Q	C	E	R	A	E	G	R	H	S	T	G	G	M	D	E	L	Y	K	G	G	T	G	S	L	
LAR-GECO1.2	D	I	V	S	-	H	N	E	D	Y	T	I	V	E	Q	C	E	R	A	V	G	R	H	S	T	G	G	M	D	E	L	Y	K	G	G	T	G	S	L	
GCaMP #s	159	160	161	162	163	164	164a	164b	164c	165	166	167	168	169	170	171	172	173	174	175	176	177	178	179	180	181	182	183	184	185	186	187	188	189	190	191	192	193	194	
R-GECO1	V	S	K	G	E	E	D	N	R	A	I	I	K	E	F	M	R	F	K	V	H	M	E	G	S	V	N	G	H	E	F	E	I	E	G	E	G	E	G	R
LAR-GECO1	V	S	K	G	E	E	D	N	R	A	I	I	K	E	F	M	R	F	K	V	H	M	E	G	S	V	N	G	H	E	F	E	I	E	G	E	G	E	G	R
R-GECO1.2	V	S	K	G	E	E	D	N	R	A	I	V	K	E	F	M	R	F	K	L	H	M	E	G	S	V	N	G	H	E	F	E	I	E	G	E	G	E	G	R
LAR-GECO1.2	V	S	K	G	E	E	D	N	R	A	I	V	K	E	F	M	R	F	K	L	H	M	E	G	S	V	N	G	H	E	F	E	I	E	G	E	G	E	G	R
GCaMP #s	195	196	197	198	199	200	201	202	203	204	205	206	207	208	209	209a	210	211	212	213	214	215	216	217	218	219	220	221	222	223	224	225	226	227	228	229	230	231	232	233
R-GECO1	P	Y	E	A	F	Q	T	A	K	L	K	V	T	K	G	G	P	L	P	F	A	W	D	I	L	S	P	Q	F	M	Y	G	S	K	A	Y	I	K	H	P
LAR-GECO1	P	Y	E	A	F	Q	T	A	K	L	K	V	T	K	G	G	P	L	P	F	A	W	D	I	L	S	P	Q	F	M	Y	G	S	K	A	Y	I	K	H	P
R-GECO1.2	P	Y	E	A	F	Q	T	A	K	L	K	V	T	K	G	G	P	L	P	F	A	W	D	I	L	S	P	Q	F	M	Y	G	S	K	A	Y	I	K	H	P
LAR-GECO1.2	P	Y	E	A	F	Q	T	A	K	L	K	V	T	K	G	G	P	L	P	F	A	W	D	I	L	S	P	Q	F	M	Y	G	S	K	A	Y	I	K	H	P
GCaMP #s	234	235	236	237	238	239	240	241	242	243	244	245	246	247	248	249	250	251	252	253	254	255	256	257	258	259	260	261	262	263	264	265	266	267	268	269	270	271	272	273
R-GECO1	A	D	I	P	-	-	D	Y	F	K	L	S	F	P	E	G	F	R	W	E	R	V	M	N	F	E	D	G	G	I	I	H	V	N	Q	D	S	S	L	Q
LAR-GECO1	A	D	I	P	-	-	D	Y	F	K	L	S	F	P	E	G	F	R	W	E	R	V	M	N	F	E	D	G	G	I	I	H	V	N	Q	D	S	S	L	Q
R-GECO1.2	A	D	I	P	-	-	D	Y	F	K	L	S	F	P	E	G	F	R	W	E	R	V	M	N	F	E	D	G	G	I	I	H	V	N	Q	D	T	S	L	Q
LAR-GECO1.2	A	D	I	P	-	-	D	Y	F	K	L	S	F	P	E	G	F	R	W	E	R	V	M	N	F	E	D	G	G	I	I	H	V	N	Q	D	T	S	L	Q
GCaMP #s	274	275	276	277	278	279	280	281	282	283	284	285	286	287	288	289	290	291	292	293	294	295	296	297	298	299	300	300a	300b	301	302	303	304	305	306	307	308	309	310	311
R-GECO1	D	G	V	F	I	Y	K	V	K	L	R	G	T	N	F	P	P	D	G	P	V	M	Q	K	K	T	M	G	W	E	A	T	R	D	Q	L	T	E	E	Q
LAR-GECO1	D	G	V	F	I	Y	K	V	K	L	R	G	T	N	F	P	P	D	G	P	V	M	Q	K	K	T	M	G	W	E	A	T	R	D	Q	L	T	E	E	Q
R-GECO1.2	D	G	V	F	I	Y	K	V	K	L	R	G	T	N	F	P	P	D	G	P	V	M	Q	K	K	T	M	G	W	E	A	T	R	D	Q	L	T	E	E	Q
LAR-GECO1.2	D	G	V	F	I	Y	K	V	K	L	R	G	T	N	F	P	P	D	G	P	V	M	Q	K	K	T	M	G	W	E	A	T	R	D	Q	L	T	E	E	Q
GCaMP #s	312	313	314	315	316	317	318	319	320	321	322	323	324	325	326	327	328	329	330	331	332	333	334	335	336	337	338	339	340	341	342	343	344	345	346	347	348	349	350	351
R-GECO1	I	A	E	F	K	E	A	F	S	L	F	D	K	D	G	D	G	T	I	T	T	K	E	L	G	T	V	M	R	S	L	G	Q	N	P	T	E	A	E	L
LAR-GECO1	I	A	E	F	K	E	A	F	S	L	F	D	K	D	G	D	G	T	I	T	T	K	E	L	G	T	V	M	R	S	L	G	Q	N	P	T	E	A	E	L
R-GECO1.2	I	A	E	F	K	E	A	F	S	L	F	D	K	D	G	D	G	T	M	T	T	K	E	L	G	T	V	M	R	S	L	G	Q	N	P	T	E	A	E	L
LAR-GECO1.2	I	A	E	F	K	E	A	F	S	L	F	D	K	D	G	D	G	T	M	T	T	K	E	L	G	T	V	M	R	S	L	G	Q	N	P	T	E	A	E	L
GCaMP #s	352	353	354	355	356	357	358	359	360	361	362	363	364	365	366	367	368	369	370	371	372	373	374	375	376	377	378	379	380	381	382	383	384	385	386	387	388	389	390	391
R-GECO1	Q	D	M	I	N	E	V	D	A	D	G	D	G	T	F	D	F	P	E	F	L	T	M	M	A	R	K	M	N	D	T	D	S	E	E	E	I	R	E	A
LAR-GECO1	Q	D	M	I	N	E	V	D	A	D	G	D	G	T	F	D	F	P	E	F	L	T	M	M	A	R	K	M	N	D	T	D	S	E	E	E	I	R	E	A
R-GECO1.2	Q	D	M	I	N	E	V	D	A	D	G	D	G	T	F	D	F	P	E	F	L	T	M	M	A	R	K	M	N	D	T	D	S	E	E	E	I	R	E	A
LAR-GECO1.2	Q	D	M	I	N	E	V	D	A	D	G	D	G	T	F	D	F	P	E	F	L	T	M	M	A	R	K	M	N	D	T	D	S	E	E	E	I	R	E	A
GCaMP #s	392	393	394	395	396	397	398	399	400	401	402	403	404	405	406	407	408	409	410	411	412	413	414	415	416	417	418	419	420	421	422	423	424	425	426	427	428	429	430	431
R-GECO1	F	R	V	F	D	K	D	G	N	G	Y	I	G	A	A	E	L	R	H	V	M	T	D	L	G	E	K	L	T	D	E	E	V	D	E	M	I	R	V	A
LAR-GECO1	F	R	V	F	D	K	D	G	N	G	Y	I	G	A	A	E	L	R	H	V	M	T	D	L	G	E	K	L	T	D	E	E	V	D	E	M	I	R	V	A
R-GECO1.2	F	R	V	F	D	K	D	G	N	G	Y	I	G	A	A	E	L	R	H	V	M	T	D	L	G	E	K	L	T	D	E	E	V	D	E	M	I	R	V	A
LAR-GECO1.2	F	R	V	F	D	K	D	G	N	G	Y	I	G	A	A	E	L	R	H	V	M	T	D	L	G	E	K	L	T	D	E	E	V	D	E	M	I	R	V	A
GCaMP #s	432	433	434	435	436	437	438	439	440	441	442	443	444	445	446	447	448	449	450	451																				
R-GECO1	D	I	D	G	D	G	Q	V	N	Y	E	E	F	V	Q	M	M	T	A	K																				

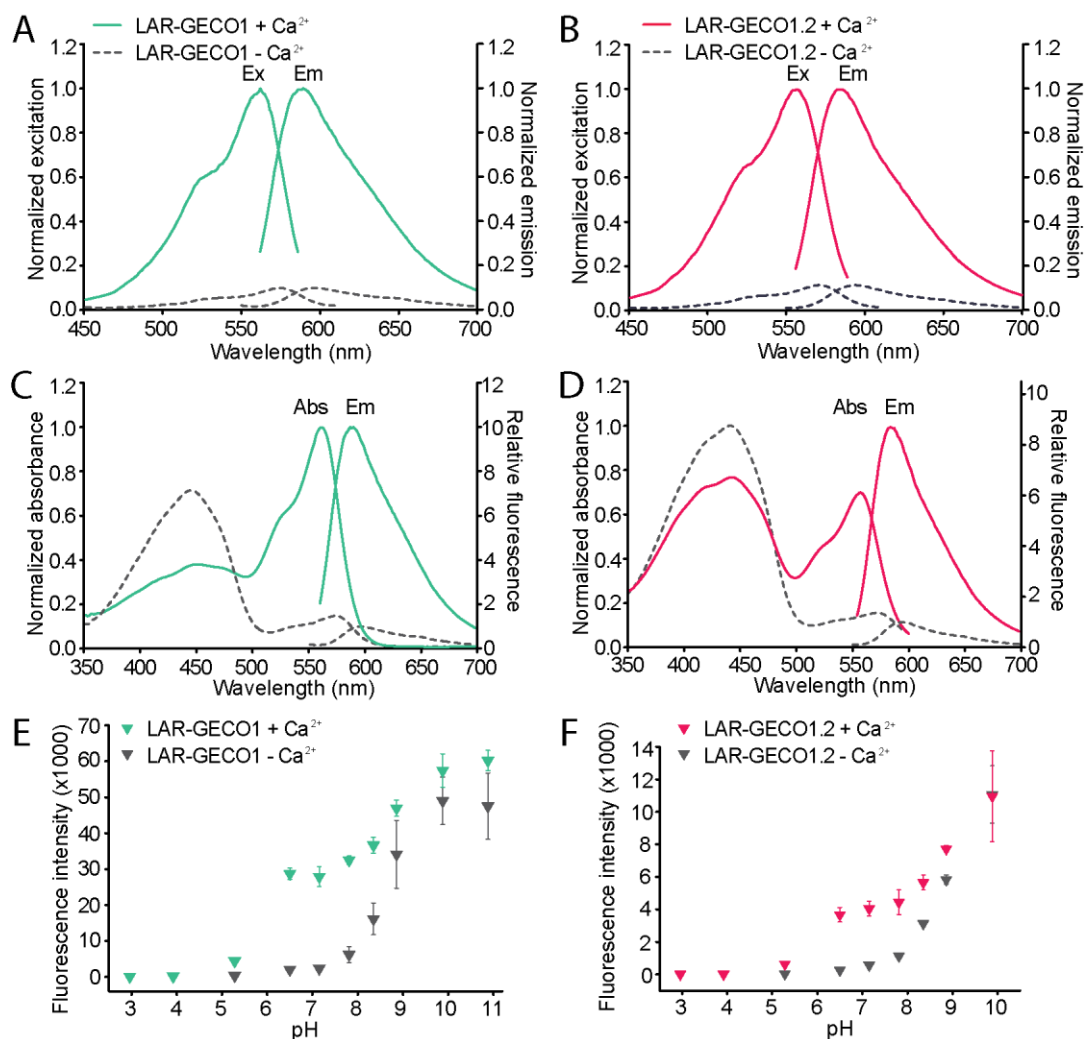


Figure S3 Characterization of LAR-GECO1 and LAR-GECO1.2

For (A-D), the Ca²⁺-free state is represented with a dotted line and the Ca²⁺-bound state by a solid line. All spectra were measured as previously described [6].

(A and B) Excitation (Ex) and emission (Em) spectra of LAR-GECO1 (A) and LAR-GECO1.2 (B) in the Ca²⁺-free and Ca²⁺-bound states.

(C and D) Absorbance (Abs) and emission (Em) spectra of LAR-GECO1 (C) and LAR-GECO1.2 (D) in the Ca²⁺-free and Ca²⁺-bound states.

(E and F) Fluorescence intensities of LAR-GECO1 (E) and LAR-GECO1.2 (F) as a function of pH.

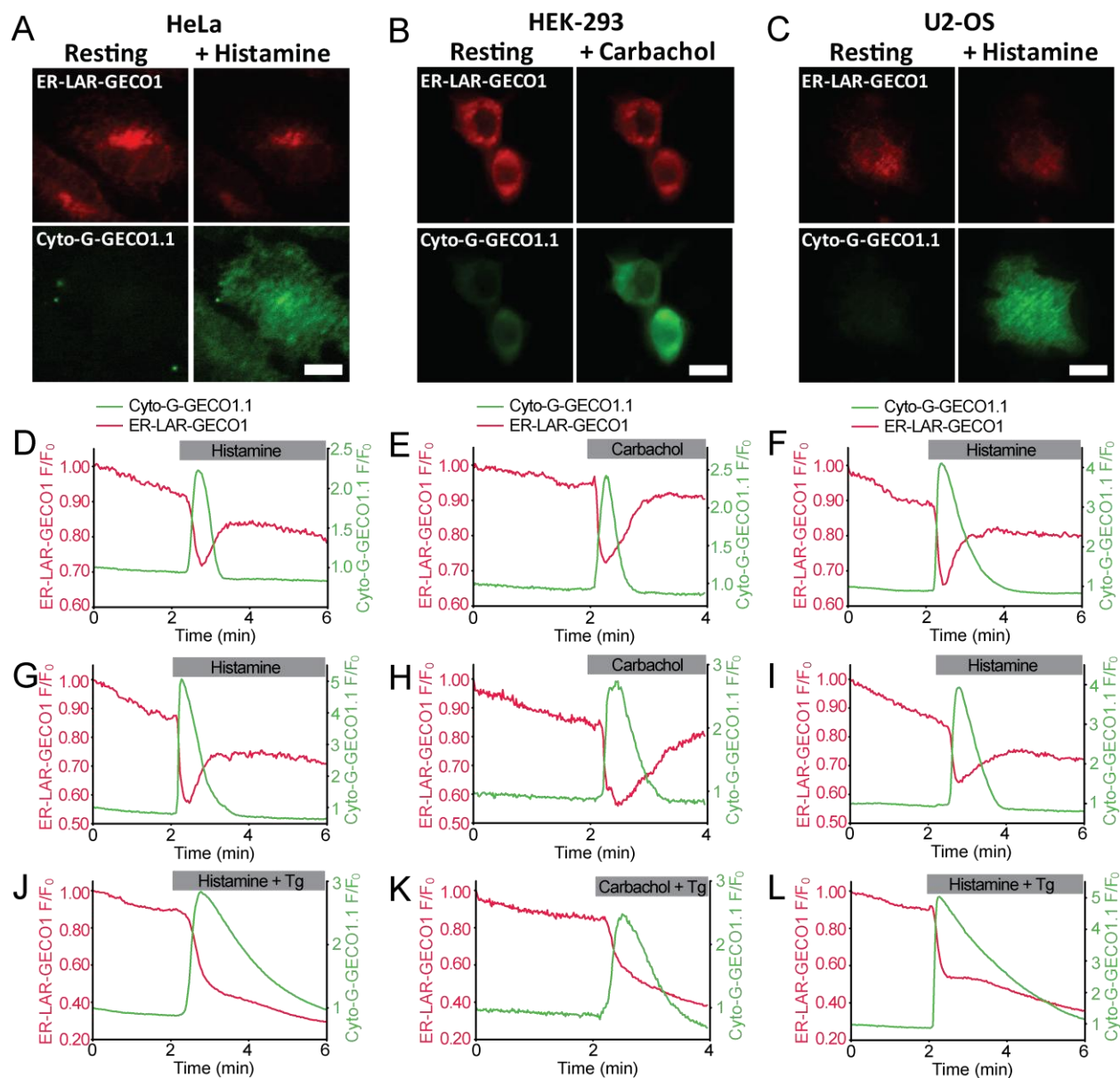


Figure S4 Characterization of ER-LAR-GECO1 in HeLa, HEK-293 and U2-OS cells

(A) HeLa cells, (B) HEK-293 cells and (C) a U2-OS cell co-expressing ER-LAR-GECO1 (red) and Cyto-G-GECO1.1 (green), imaged in the resting state (left panels) and after treatment with histamine (100 μ M, right panels). Images after treatment with histamine correspond to the time of maximal increase in the fluorescence intensity of Cyto-G-GECO1.1. Scale bars = 10 μ m.

(D-L) Effects of the release of ER Ca²⁺ evoked by histamine (100 μ M) or carbachol (1 mM) applied alone or with thapsigargin (Tg, 10 μ M), on the fluorescence intensities of ER-LAR-GECO1 (red lines) and Cyto-G-GECO1.1 (green lines) co-expressed in HeLa cells (DGJ), HEK-293 cells (EHK) and U2-OS cells (FIL). Cells were bathed in HBS (D-F and J-L) or nominally Ca²⁺-free HBS (G-I). Each trace shows the response from a single cell, and is representative of at least 4 similar recordings.

Table S1 List of substitutions for new GECOs described in this work. Residues are numbered as described in **Figure S2**

Protein	LAR-GECO1 substitutions relative to R-GECO1 LAR-GECO1.2 substitutions relative to R-GECO1.2
LAR-GECO1	V51W, I113V, N356S, D381Y, F395A, V411A, L415I
LAR-GECO1.2	N45I, A47R, E138V, K324E