

Research Article

Identification of ribosomal protein family in triple-negative breast cancer by bioinformatics analysis

Ziyue Lin^{1,*}, Rui Peng^{2,*}, Yan Sun¹, Luyu Zhang¹ and  Zheng Zhang¹

¹Department of Molecular Medicine and Cancer Research Center, Chongqing Medical University, Chongqing, China; ²Department of Bioinformatics, Chongqing Medical University, Chongqing, China

Correspondence: Zheng Zhang (zhangzheng92@163.com)



Triple-negative breast cancer (TNBC) accounts for ~20% of all breast cancer (BC) cases. The management of TNBC represents a challenge due to its worse prognosis, heterogeneity and lack of targeted therapy. Moreover, its mechanisms are not fully clear. The aim of the study is to identify crucial genes between TNBC and non-TNBC for underlying targets for diagnostic and therapeutic methods of TNBC. The differentially expressed genes (DEGs) between TNBC and non-TNBC were selected from the Gene Expression Omnibus (GEO) database after the integrated analysis of two datasets (GSE65194 and GSE76124). Then Gene ontology (GO) and KEGG analysis were performed by DAVID database, protein–protein interaction (PPI) of DEGs was constructed by Search Tool for the Retrieval of Reciprocity Genes (STRING) database. Furthermore, centrality analysis and module analysis were carried out by Cytoscape to analyze the TNBC-related PPI. Subsequently, overall survival (OS) analysis was performed by GEPIA. Finally, the expressions of these key genes in TNBC and non-TNBC tissues were tested by qRT-PCR. The results showed that 955 DEGs were obtained, which were mainly enriched in ribosome, ribosomal subunit, and so on. Moreover, 19 candidate genes were focused on by centrality analysis and module analysis. Furthermore, we found the low expressions of ribosomal protein S9 (*RPS9*), ribosomal protein S14 (*RPS14*), ribosomal protein S27 (*RPS27*), ribosomal protein L11 (*RPL11*) and ribosomal protein L14 (*RPL14*) were related to a poor OS in BC patients. Additionally, qRT-PCR results suggested that these five genes were notably down-regulated in TNBC tissues. In summary, the present study suggests that ribosomal proteins are related to TNBC, and they may play an important role in the diagnosis, treatment and prognosis of TNBC.

Introduction

Breast cancer (BC) is the most common malignant disease worldwide and remains a major health problem among women [1]. Triple-negative BC (TNBC) is a particular subtype of BC, which is diagnosed by lacking the expression of estrogen receptor (ER), progesterone receptor (PR), and human epidermal growth factor receptor 2 (HER2), and accounts for approximately 15–20% of all BC [2]. Molecular expression profile, reflecting clinical heterogeneity, has set up five types of breast carcinomas that carry different properties of prognoses and survivals: Luminal A, Luminal B, Her2(+), normal and triple negative subtypes [3]. TNBC typically behaves more aggressively, worse overall survival (OS) and requires more complicated treatment approaches compared with non-TNBC [4]. Correct early diagnosis assessment of BC is very difficult, even though many cancer-related genes and cellular pathways related to BC have appeared [5]. The common treatments of BC are surgery, chemotherapy, radiotherapy and endocrine therapy, such as

*These are co-first authors.

Received: 26 March 2020
Revised: 25 September 2020
Accepted: 10 December 2020

Accepted Manuscript online:
11 December 2020
Version of Record published:
06 January 2021

endocrine therapy for hormone receptor-positive patients and trastuzumab for HER2-positive patients, but there are no valid treatment tactics available to treat TNBC [6]. TNBC patients frequently suffer higher risks of distant recurrence and distal metastasis, and higher possibility of relapse, causing poor prognosis [7]. Therefore, it is vitally important to explore potential diagnostic and prognostic biomarkers and therapeutic targets of TNBC.

The fast development of gene microarray technology and bioinformatics analysis based on high-throughput data, provide new tactics to identify differentially expressed genes (DEGs) and discover therapeutic targets for the initiation and evolution of BC [8]. Aberrant expression of genes plays an important role in the initiation and progression of tumors, so mastering the alteration in the characteristics of critical genes promotes to comprehensively understand TNBC progression and screen related molecular markers [9]. Recently, studies identified low expression of *ITSN1* in BC tissues and cell lines by bioinformatics analysis [5]. Indeed, some researchers found key genes and pathways in TNBC by integrated bioinformatics analysis between TNBC and non-TNBC [10]. However, the use of bioinformatics analysis method to find the relevant genes of TNBC has not yet been confirmed.

In the current study, we aimed to gain the crucial genes between TNBC and non-TNBC. We identified 955 DEGs by comparing the genes expression profiles of samples from TNBC and non-TNBC patients and constructed the TNBC-related protein–protein interaction (PPI) network. Moreover, gene ontology (GO) showed the DEGs enriched in ribosome, ribosomal subunit, cytosolic ribosome, structural constituent of ribosome, RAGE receptor binding. And Kyoto Encyclopedia of Genes and Genomes pathway (KEGG) analysis displayed that the significant pathways included ribosome, FOXO signaling pathway, HIF-1 signaling pathway. Further, 19 candidate genes with high centrality values and located at the first module were found by the centrality analysis and module screening in the TNBC-related PPI network. Interesting, the results of survival analysis displayed ribosomal protein family genes were related to a poor OS among these candidate genes, including ribosomal protein S9 (RPS9), ribosomal protein S14 (RPS14), ribosomal protein S27 (RPS27), ribosomal protein L11 (RPL11) and ribosomal protein L14 (RPL14). Additionally, quantitative real-time PCR (qRT-PCR) results showed the expressions of RPS9, RPS14, RPS27, RPL11 and RPL14 were notably down-regulated in tumor tissues of 16 TNBC patients when compared with those in 21 cases of non-TNBC patients. The present study might provide further insight into the ribosomal proteins for prognosis and drug discovery in TNBC.

Materials and methods

Access to public data

Two expression profiling datasets (GSE65194 and GSE76124) were downloaded from the Gene Expression Omnibus (GEO) database (<https://www.ncbi.nlm.nih.gov/geo/>), an open platform for storing genetic data. Their screening criteria are as follows: (a) they were updated recently (2019); (b) the sample size of each dataset would be greater than 150; (c) the samples are from the same platform: GPL570 [HG-U133_Plus_2] Affymetrix Human Genome U133 Plus 2.0 Array. The GSE65194 dataset contained 178 arrays. A total of 153 arrays were used to analyze 130 unique BC samples (41 cases of TNBC; 89 cases of non-TNBC) and 23 technical duplicates. In addition 11 normal breast tissue samples and 14 TNBC cell lines were included. GSE76124 consisted of 198 TNBC tumors (discovery set: $n=84$; validation set: $n=114$).

Screening for DEGs

In order to find out DEGs between in TNBC and non-TNBC breast tissues in the GSE76124 and GSE65194 datasets, we first removed the normal samples and cell lines, and then left TNBC and non-TNBC cancer samples. Through R affymetrix package analysis, we obtained the list of DEGs of the two microarray datasets. The list of down-regulated and up-regulated genes in the microarray data were saved. $P < 0.05$ and $|\text{fold change}| > 1.5$ were used as the cut-off criteria of DEGs.

GO and KEGG pathway analysis

GO is a bioinformatics tool and used to annotate genes and analyze biological functions of DEGs or key genes. In addition, GO offers three categories of defined terms, which include biological processes (BP), cellular component (CC), and molecular function (MF). KEGG, as a sophisticated database resource for the systematic analysis of gene functions, links genomic information and high-order functional information. DAVID [11] (<https://david.ncifcrf.gov/>) was used to perform the GO and KEGG analysis. The species was limited to *Homo sapiens* and $P < 0.05$ was set as the cut-off criterion.

Construction of PPI network

The Search Tool for the Retrieval of Reciprocity Genes (STRING) database [11] (<http://string-db.org/>), which collects and predicts interaction information from genomic context predictions, high-throughput lab experiments, co-expression, automated text-mining and previous knowledge from databases, was used to predict the potential interactions between gene candidates at the protein level. The combined score of medium confidence > 0.4 was used as the cut-off value in the STRING database. In the PPI network, certain DEGs on the margins and isolated, suggesting no association with other genes, were removed.

Centrality analysis of PPI network

Centrality analysis which is used to identify the vital nodes in networks is of great significance for understanding the function of nodes and the nature of networks [12]. Many centrality indices have been proposed to identify the influential nodes of networks. Typically, we predicted the key genes of the network using the significant graph-theoretic measures of degree centrality, betweenness centrality and closeness centrality [13]. The scores of three centralities (degree centrality, closeness centrality and betweenness centrality) were calculated by cytoNCA, a plugin of Cytoscape for network centrality analysis. Then we used R language to describe the distribution of the three parameters and calculate the correlation among the three key centralities. Finally, the Venn diagram presented the intersections of the top 30% degree value, top 30% betweenness value and top 30% closeness value.

Module analysis of PPI network

MCODE, a plug-in Cytoscape, is applied to screen the modules considered to be the essential part of the network [14]. And degree cut-off = 2, node density cut-off = 0.1, node score cut-off = 0.2, k-core = 2 and max depth = 100 were regarded as the criteria. The genes in the first ranked Module with high degree, betweenness and closeness values were selected as candidate genes for further analysis.

Survival analysis of Hub genes

The OS analysis of 19 candidate genes was performed using the online GEPIA survival analysis server (<http://gepia.cancer-pku.cn/>) [15], which included 9736 tumor tissues and 8587 normal tissues. The $P < 0.05$ was considered to indicate statistical significance, and screened out promising hub genes with the prognostic value.

Tissue samples

The samples of 16 TNBC tissues and 21 non-TNBC tissues were collected from the First Affiliated Hospital of Chongqing Medical University (Chongqing, China) without chemotherapy or radiotherapy before surgical excision and all patients gave informed consents. Tissue samples were snap-frozen in liquid nitrogen for further analysis. All samples specimens from the patients were diagnosed with TNBC or non-TNBC by biopsy specimen immunohistochemistry staining. The study has been approved by the Ethics Committee of the Chongqing Medical University, and was conducted in compliance with the Helsinki Declaration.

RNA isolation and determination of target gene expression using qRT-PCR

To confirm our bioinformatics results, qRT-PCR were conducted on TNBC and non-TNBC tissues. Total RNA was prepared using TRIzol reagent (TaKaRa, China). The isolated RNA was reverse-transcribed into cDNA using a reverse transcription kit (TaKaRa, China). The qRT-PCR procedure was performed as follows: 3 min for 95°C, 40 cycles at (95°C for 15 s, 60°C for 30 s, 72°C for 30 s), 65°C for 5 s, 95°C for 50 s. Each qRT-PCR was performed in triplicate on samples. The primers used for the validation are listed in Table 1. The relative quantitative data of mRNAs were normalized to GAPDH and quantified using the $2^{-\Delta\Delta C_t}$ method ($\Delta C_t = C_t$ target gene – C_t internal control) [16].

Statistical analysis

Statistical analyses were performed in GraphPad Prism 5.0 software. The values of different groups were represented by the mean \pm SD. The comparison of expression levels of TNBC and non-TNBC tumor tissues were analyzed by unpaired *t* test. $P < 0.05$ was considered to represent a statistically significant difference.

Results

Identification of DEGs

Generally, 239 patients with TNBC and 89 patients with non-TNBC were incorporated into the present study by integrating and screening samples of GSE65194 and GSE76124. The fundamental characteristics of the TNBC and

Table 1 The primer sequence of the five key genes

Gene symbol	Primer category	Primer sequence
RPS9	Forward primer	GAAATCTCGTCTCGACCAAGAG
	Reverse primer	GGTCCTTCTCATCAAGCGTCA
RPS14	Forward primer	CCATGTCACCTGATCTTTCTGGC
	Reverse primer	TCATCTCGGTCTGCCTTTACC
RPS27	Forward primer	ATGCCTCTCGCAAAGGATCTC
	Reverse primer	TGAAGTAGGAATTGGGGCTCT
RPL11	Forward primer	AAAGGTGCGGGAGTATGAGTT
	Reverse primer	TCCAGGCCGTAGATACCAATG
RPL14	Forward primer	GACCTTGCACTCAAGTGAGGA
	Reverse primer	CTTGTCGGACATACTTCTGGTG
GAPDH	Forward primer	ACAACCTTTGGTATCGTGGAAGG
	Reverse primer	GCCATCACGCCACAGTTTC

Table 2 Clinical characteristics of the TNBC and non-TNBC patients

Characteristic	All tumors		TNBC		Non-TNBC		Chi-square	P-value
	n	%	n	%	n	%		
Age (years)	322		233		89			
<50	126	39.13	93	39.91	33	37.08	0.217	0.641
≥50	196	60.87	140	60.09	56	62.92		
Missing	6		6		0			
Menopausal status	297		208		89			
Premenopausal	129	43.43	88	42.31	41	46.07	0.359	0.549
Postmenopausal	168	56.57	120	57.69	48	53.93		
Missing	31		31		0			
Body mass index	294		206		88			
Underweight (<18.5)	7	2.38	3	1.46	4	4.55	22.313	0.000
Normal (18.5–24.9)	115	39.12	65	31.55	50	56.82		
Overweight (25–29.9)	94	31.97	72	34.95	22	25.00		
Obese (≥30)	78	26.53	66	32.04	12	13.64		
Missing	34		33		1			
Tumor size (cm)	312		232		80			
<2	81	25.96	44	18.97	37	46.25	23.052	0.000
2–5	203	65.06	165	71.12	38	47.50		
>5	28	8.97	23	9.91	5	6.25		
Missing	16		7		9			
Metastases	276		187		89			
No metastases	246	89.13	173	92.51	73	82.02	6.85	0.009
Metastases found	30	10.87	14	7.49	16	17.98		
Unknown	52		52		0			

non-TNBC were summarized in Table 2. The results displayed TNBC was positively correlated with body mass index ($P < 0.0001$), tumor size ($P < 0.0001$) and metastases ($P < 0.001$), but not with other clinical pathological parameters including age and menopausal status.

Through R affymetrix package process, we integrated the two microarray datasets and obtained 23506 genes. Further study, we identified 955 DEGs between TNBC and non-TNBC groups on the basis of $|\text{fold change}| > 1.5$ and $P\text{-value} < 0.05$. Among these DEGs, 587 genes were up-regulated and 368 genes were down-regulated (Figure 1).

Enrichment function analysis of GO and KEGG pathways

To gain in-depth and comprehensive biological characteristics of these DEGs, GO functional annotation and KEGG signaling pathway enrichment analysis were performed through online analytical tool DAVID. The results of the GO analysis demonstrated that DEGs significantly enriched in ‘pattern specification process’, ‘nuclear speck’, ‘ubiquitin like-protein transferase active’ (Figure 2A), ‘ribosome’, ‘ribosomal subunit’, ‘large ribosomal subunit’, ‘cytosolic ribo-

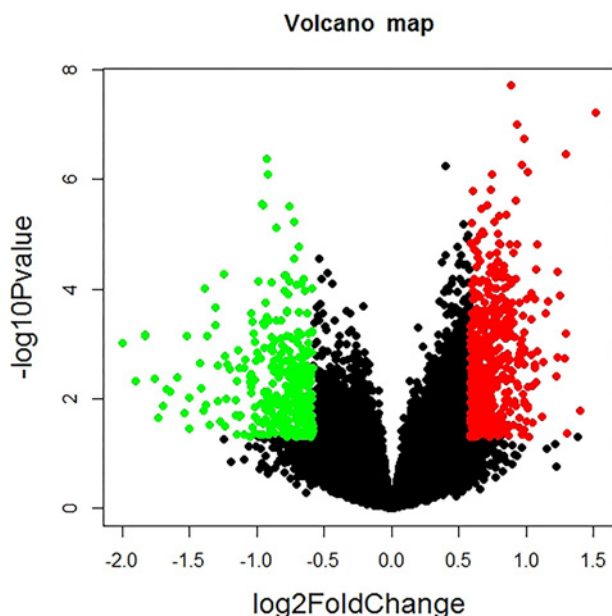


Figure 1. Volcano plot demonstrating the differential expression of all genes

Red points mean up-regulated genes screened on the basis $|\log_2 \text{fold change}| \geq 0.585$ and $P\text{-value} < 0.05$. Green points mean down-regulated genes screened on the basis $|\log_2 \text{fold change}| \geq 0.585$ and $P\text{-value} < 0.05$. Black points represent genes with no difference in expression.

some, 'mitochondrial ribosome' and 'structural constituent of ribosome' (Figure 2B). In addition, KEGG pathway enrichment analysis indicated that significant pathways of DEGs included 'Hippo signaling pathway', 'mTOR signaling pathway', 'Wnt signaling pathway' (Figure 2C), 'Ribosome' and 'Neuroactive ligand-receptor interaction' (Figure 2D). Both GO and KEGG results showed the DEGs were enriched in ribosomal related terms or pathways. These results suggest that ribosome-related genes may play an important role in the occurrence and development of TNBC.

Construction of the TNBC-related PPI network

To explore the functions of these DEGs, the TNBC-related PPI network was constructed by an online analysis tool STRING. Each gene was assigned a degree representing the number of neighboring nodes in the network and average node degree was 10.3. A total of 841 nodes and 4338 edges were screened from the network, as shown in Supplementary Figure S1.

Centrality analysis of the PPI network

To study the features of the molecules in the TNBC-related PPI network, centrality analysis was performed using three topological parameters (degree, betweenness and centrality) in cytoNCA. Degree centrality is the most direct measure of the centrality of a node in network analysis. Betweenness centrality is an indicator of the importance of a node based on the number of shortest paths through a node. Closeness centrality reflects the proximity of a node to other nodes in the network. Our results showed that the density distributions of degree and betweenness displayed the long-tailed distribution [17], while closeness displayed fat-tailed distribution [18] (Figure 3A–C). The long-tailed distribution of degree and betweenness indicated that the parameter values of the vast majority of genes were small, and only a few genes had fairly large parameter values. The fat-tailed distribution of closeness indicated that the parameter values of the most genes were generally high. As known, in a PPI network, the greater the centrality value is, the more important the gene is. Therefore, 147 DEGs with high topological features (top 30% of each parameter) were obtained chosen for further study (Figure 3D).

Module analysis of the PPI network

To further explore the characteristics of the molecules based on the PPI network, modules analysis was utilized by MCODE in Cytoscape software. The results showed 23 modules in the PPI network. The first-ranked module which was the most significant module was filtered from the PPI network, and it included 34 nodes and 499 edges with

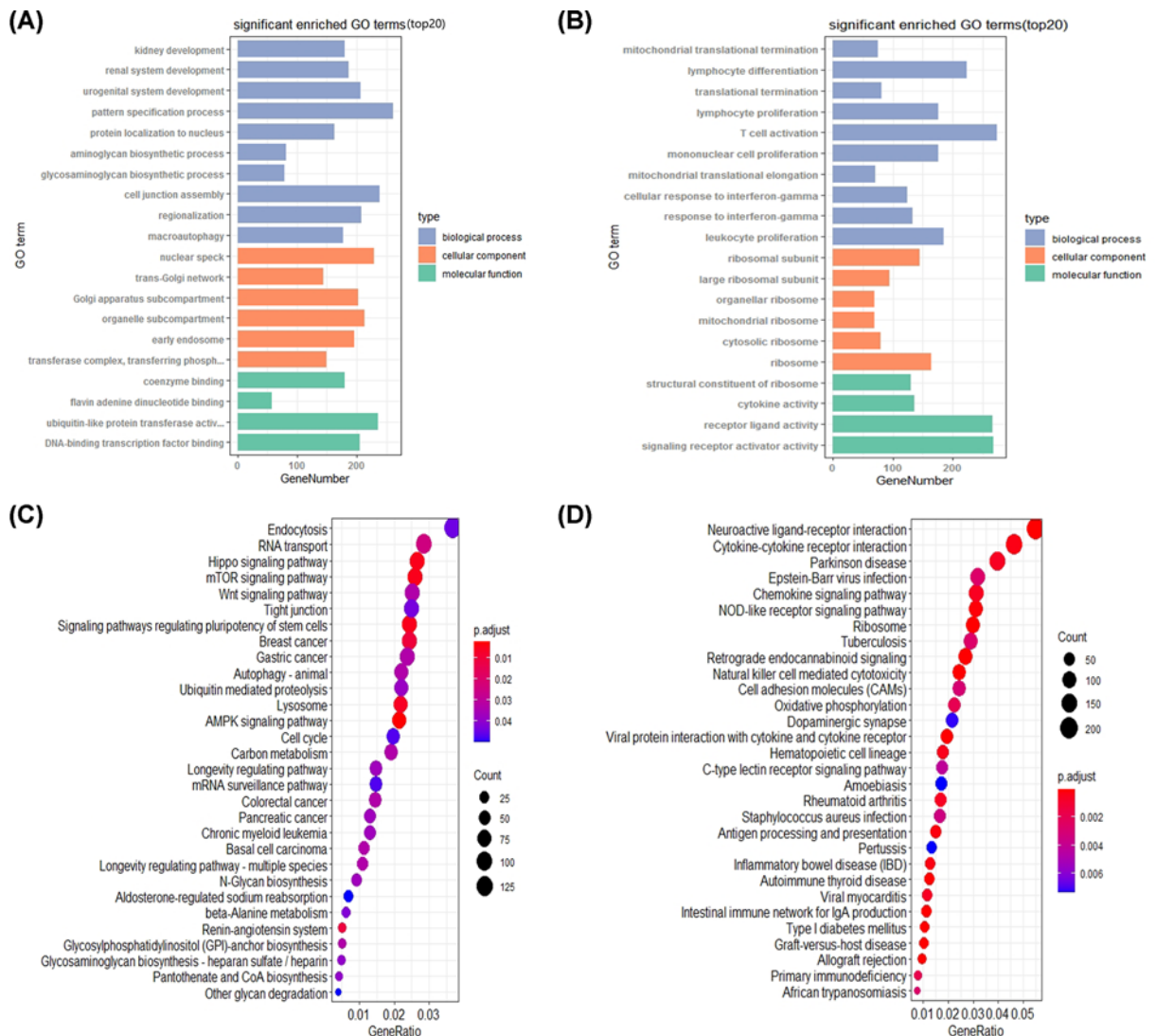


Figure 2. GO and KEGG enrichment analysis of the PPI network

(A) Top 20 significantly enriched GO annotations of up-regulated DEGs, including three groups (molecular function, biological process and cellular component), $P < 0.05$. (B) Top 20 significantly enriched GO annotations of down-regulated DEGs, $P < 0.05$. (C) Top 20 functional pathways of up-regulated DEGs through KEGG analysis, $P < 0.05$. (D) Top 20 functional pathways of down-regulated DEGs through KEGG analysis, $P < 0.05$.

a highest score of 30.242 (Figure 3E). Ultimately, 19 candidate genes (*MAGOHB*, *RPL18*, *SSR4*, *EIF5B*, *SRP72*, *RPS6*, *RPS27A*, *UPF1*, *RPL32*, *RPS5*, *SEC61G*, *RPS9*, *RPL11*, *RPS27*, *EIF4B*, *RPL14*, *EIF4E*, *RPS14* and *RPL29*) in the network were focused on because of their high centrality values and the location of the first ranked module. Interestingly, 11 genes were ribosome-related genes among these 19 genes, pointing that ribosomal gene may play an important role in TNBC.

OS analysis of candidate genes

OS is often considered the best outcome endpoint in clinical trials of cancer. The prognostic value of 19 candidate genes in the PPI network was evaluated by using the online GEPIA survival analysis. OS for TNBC patients was obtained in the accordance with the low or high expression of the 19 candidate genes. Based on the screen criteria $P < 0.05$, we obtained five key genes such as *RPS9* ($P = 0.047$), *RPS14* ($P = 0.049$), *RPS27* ($P = 0.021$), *RPL11* ($P = 0.0088$), *RPL14* ($P = 0.0025$). As it is shown in Figure 4, a low expression of *RPS9*, *RPS14*, *RPS27*, *RPL11* or *RPL14* was associated with poor prognosis in the BC, suggesting they could help develop an interesting therapeutic

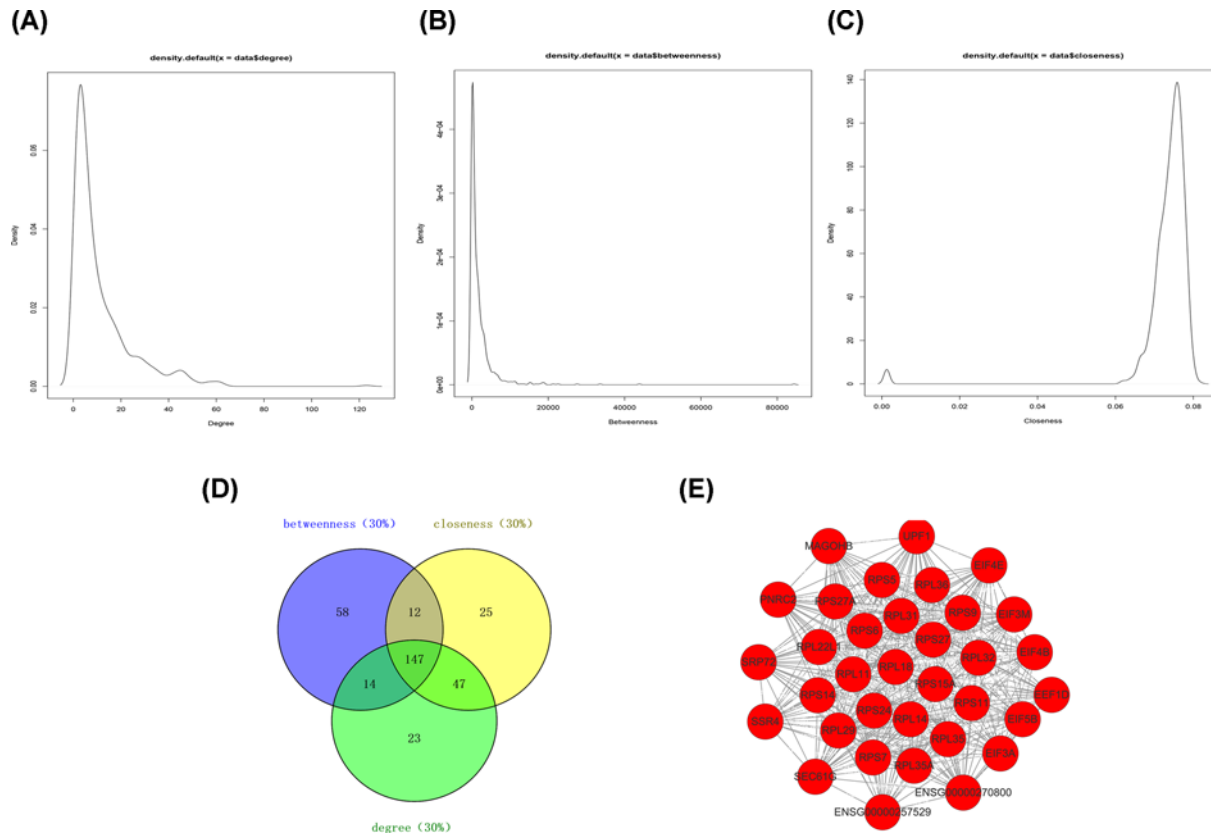


Figure 3. Centrality analysis and module analysis of the PPI network acquired through cytoNCA and MCODE plugins of Cytoscape

(A) A density diagram of degree centrality. (B) A density diagram of betweenness centrality. (C) A density diagram of closeness centrality. (D) The intersection of the top 30% molecules in each centrality (degree, betweenness, closeness) was detected by Venny2.1. Results showed 147 key DEGs were chosen for further study because of their high degree, betweenness and closeness. (E) The most significant module was obtained from the PPI network which contained 34 nodes and 49 edges.

approach against TNBC. Apparently, the results showed they all belonged to the ribosomal protein family, suggesting ribosome proteins may be closely related to the progress, prognosis and treatment of TNBC. Since these five key genes have the potential significance as prognosis biomarkers for TNBC, we selected them for further study.

Validation of key genes by real-time qPCR

To validate the key genes participating in the pathogenesis of TNBC, we performed qRT-PCR to detect the expression of five key genes in 16 TNBC tissues and 21 non-TNBC tissues. Our results showed the expressions of RPS9, RPS14, RPS27, RPL11 and RPL14 were significantly decreased in TNBC tissues when compared those in non-TNBC group (Figure 5). Moreover, the down-regulated expression results of these genes were verified to be consistent with the microarray results. These results suggest ribosomal proteins may participate in the development of TNBC and serve as the potential biomarker.

Discussion

BC, the most common malignancy in women, exhibits significant heterogeneity [19]. Due to the absence of druggable molecular targets, the treatment of TNBC is very limited compared with the treatment of non-TNBC subtypes. However, the molecular mechanisms of TNBC remain poorly understood. The identification of biomarkers associated with TNBC tumorigenesis and progression are urgently required. Recently, microarray technology and bioinformatics analysis has enabled researchers to explore genetic alterations, and have been a useful approach to identify novel biomarkers in several diseases, such as adrenocortical carcinoma [20]. Additionally, high-throughput technology is increasingly advanced and widespread. Simultaneously, with the development of numerous public databases, like

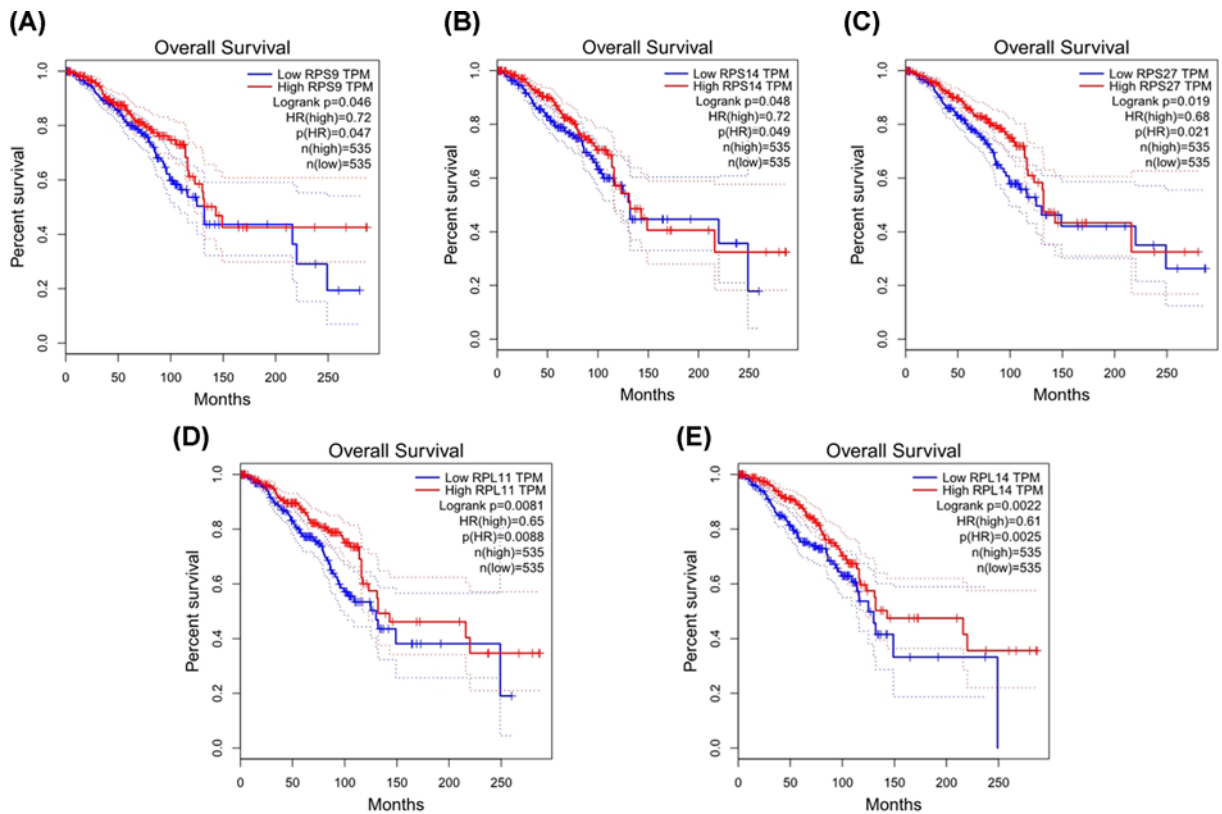


Figure 4. OS analysis of five key genes in BC patients using GEPIA

(A) OS analysis of RPS9 in BC patients. The results showed the patients with low expression of RPS9 were related to a poor prognosis. (B) OS analysis of RPS14 in BC patients. The results showed the patients with low expression of RPS14 were related to a poor prognosis. (C) OS analysis of RPS27 in BC patients. The results showed the patients with low expression of RPS27 were related to a poor prognosis. (D) OS analysis of RPL11 in BC patients. The results showed the patients with low expression of RPL11 were related to a poor prognosis. (E) OS analysis of RPL14 in BC patients. The results showed the patients with low expression of RPL14 were related to a poor prognosis. $P < 0.05$ was considered to indicate a statistically significant difference.

the GEO, transcriptomic and genomic research get great convenience from these public databases. Thus, based on these public platforms, we used bioinformatics analysis to explore the transcriptional differences between TNBC and non-TNBC to better understand BC and provide new clues of targeted therapy for TNBC.

In our study, by the analysis of two gene expression profiles of GSE65194 and GSE76124, we identified 955 DEGs in TNBC compared with non-TNBC ($P < 0.05$, $FC > 1.5$), including 587 up-regulated genes and 368 down-regulated genes. Moreover, GO enrichment analysis revealed that DEGs significantly enriched in ribosome, ribosomal subunit and cytosolic ribosome. The KEGG pathway database contains information on systematic analysis of gene functions, linking genomics with functional information. Also, the result of KEGG showed that the genes were mainly enriched in ribosome and FOXO signaling pathway. This result arouses us enormous interest. Both GO terms and KEGG pathways displayed the ribosomal related, suggesting ribosomal related genes may play roles in TNBC. About ribosome, controlled changes in ribosome heterogeneity would up- or down-regulate particular genetic networks [21]. It has been reported that when ribosomal protein is deleted or reduced, the ribosome biogenesis process is blocked [22] and ribosome biogenesis has recently emerged as an effective target in cancer therapy [23,24]. For instance, RPL10a/uL1 is required for translation of mRNAs that promote cell survival, while genes that contribute to cell death are depleted from RPL10a/uL1 containing ribosomes, suggesting that tuning the levels of RPL10a/uL1 could shift the balance between cell survival and death [25]. Some researchers revealed a series of eukaryotic-specific antibiotics that are specific to cytosolic ribosome, uncovering promising cancer targets for human ribosomes [26]. Therefore, the data suggest that the identified DEGs which enriched in ribosomal terms or pathways may participant in the development of TNBC and contribute to TNBC treatment.

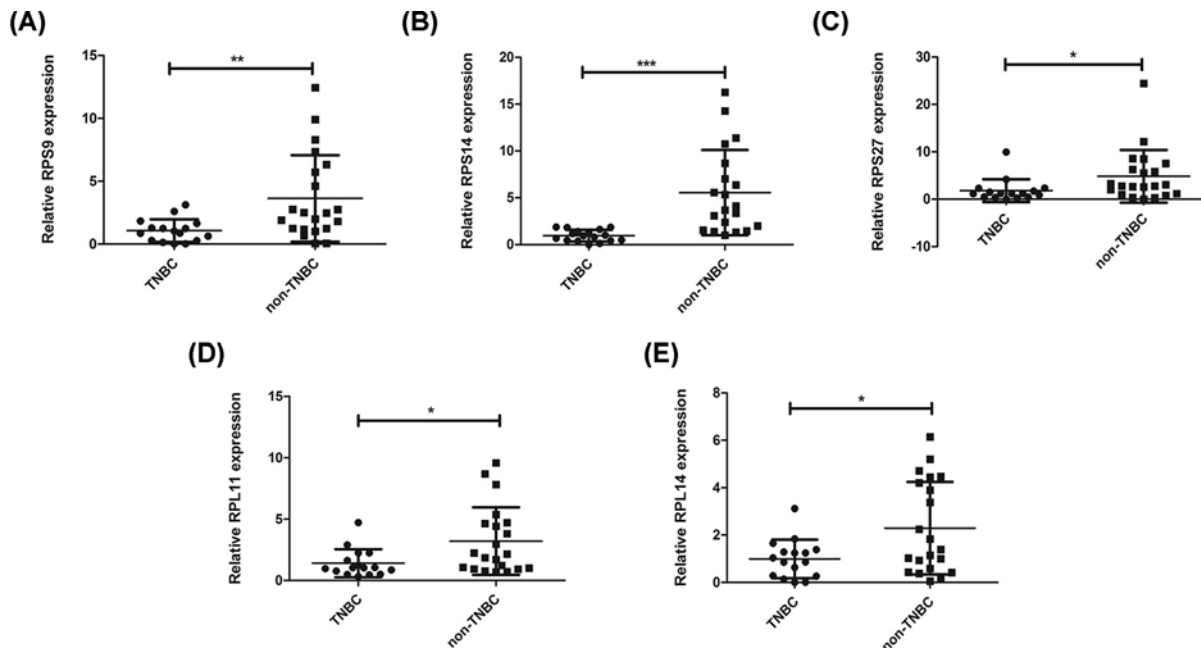


Figure 5. Validation of five key genes through qRT-PCR

(A) The relative mRNA expression of RPS9 was lower in TNBC tissues than that in non-TNBC tissues. (B) The relative mRNA expression of RPS14 was lower in TNBC tissues than that in non-TNBC tissues. (C) The relative mRNA expression of RPS27 was lower in TNBC tissues than that in non-TNBC tissues. (D) The relative mRNA expression of RPL11 was lower in TNBC tissues than that in non-TNBC tissues. (E) The relative mRNA expression of RPL14 was lower in TNBC tissues than that in non-TNBC tissues (* means $P < 0.05$, ** means $P < 0.01$, *** means $P < 0.001$).

To explore the molecular mechanism of TNBC, we constructed the TNBC-related PPI network. We screened 841 nodes and 4338 edges from the network. Moreover, we performed centrality analysis and acquired 147 DEGs with high topological features. As known, centrality analysis was a criteria of screening hub genes to identify DEGs in lung cancer [27]. To deeply explore the molecular features of TNBC, we detected 23 functional modules by module analysis. Importantly, the first ranked module was found including 34 nodes and 499 edges. According to previous studies, modules analysis have been widely used to identify the key genes in many cancers such as renal carcinoma [9], TNBC [28] and gastric adenocarcinoma [29]. Thus, these suggest that the genes in the first-ranked module may be the significant molecules of the network. Comprehensively considering centrality analysis and module analysis, we found 19 candidate genes in the first-ranked module with high degree, betweenness and closeness. These candidate genes acted as important molecules in the network. Therefore, it suggests that these 19 candidate molecules may be the important molecules in the TNBC compared with non-TNBC.

Survival analysis is important indicators for assessing the prognosis of diseases, especially in cancer research. Our results indicated that TNBC patients with the low expression genes of RPS9, RPS14, RPS27, RPL11 or RPL14 were significantly worse in survival and prognosis of BC. Furthermore, real-time PCR was used to confirm the expression of these five genes in 16 TNBC samples and 21 non-TNBC samples. Our real-time PCR results showed that RPS9, RPS14, RPS27, RPL11 and RPL14 were all down-regulated in TNBC samples compared with non-TNBC samples. Our findings suggested that these five genes were the most important differently expressed genes between TNBC and non-TNBC. RPS9, RPS14, RPS27, RPL11 and RPL14 all belong to the ribosomal protein family. Combined with the results of GO and KEGG analysis, these results imply that ribosomal protein family genes may participate in TNBC.

It is well known, ribosomal protein family are the cornerstone of ribosome biogenesis and are involved in ribosome assembly. Indeed, ribosomal proteins are typically small (50–150 amino acid residues) and basic proteins with high isoelectric points [30]. Ribosomal proteins play seminal roles in the function and structure of ribosomes or in the initiation, elongation, or termination phases of protein translation. In our results, RPS9, RPS14 and RPS27 are components of the 40S subunit, while RPL11 and RPL14 are components of the 60S subunit. Studies had shown that RPS9 expression was associated with OS and extramedullary infiltration in myeloma [31]. RPS9 promoted osteosarcoma tumor growth by activating MAPK signaling pathway [32]. Based on bioinformatics analysis, RPS14 was identified

as hub gene of bladder carcinoma [33]. Overexpression of RPS14 can inhibit Rb phosphorylation and induce cell cycle arrest and aging, which may be related to cancer treatment [34]. Also, low expression of RPS27 is associated with poor clinical prognosis in melanoma [35]. RPL11, affecting osteosarcoma malignant phenotype, may be a new prognostic markers of osteosarcoma survival [36]. Furthermore, deletion of RPL11 blocked p53 activation to induce colon cancer cell apoptosis [37]. In addition, RPL14 was a diagnostic markers of glioblastoma and could be used as therapeutic targets [38]. Moreover, researches have shown that RPL14 promoted cervical cancer cell migration, invasion and EMT, which were related to cervical cancer prognosis [39]. Eminently, previous researches had indicated that RPS9, RPS14, RPL11 were down-regulated in BC and the low expression of RPS9, RPS14, RPL11 linked to worse OS in BC patients [40]. Therefore, these molecules may be used as potential effective candidates for early diagnosis or prognosis of TNBC. Importantly, research on ribosomal proteins may be a significant new direction for the diagnosis, prognosis and treatment of TNBC.

In future researches, we will further validate the reliable biomarkers for TNBC by more functional search and more samples. Our final attempts are to find the reliable biomarkers for clinical examination and point new direction of therapy.

Conclusion

We showed that ribosomal protein family genes *RPS9*, *RPS14*, *RPS27*, *RPL11* and *RPL14* are key DEGs which are associated with poor outcome in TNBC compared with non-TNBC. These genes may be potential diagnostic and prognostic biomarker and to some extent be helpful for targeted therapy of TNBC.

Competing Interests

The authors declare that there are no competing interests associated with the manuscript.

Funding

This work was supported by the National Natural Science Foundation of China [grant numbers 81770811, 81970702].

Author Contribution

Ziyue Lin conceived, designed and performed the experiments, analyzed the data, contributed reagents/materials/analysis tools, prepared figures and tables, authored or reviewed drafts of the paper, approved the final draft. Rui Peng conceived and designed the experiments, contributed reagents/materials/analysis tools, reviewed drafts of the paper, approved the final draft. Yan Sun performed the experiments, contributed reagents/materials/analysis tools, reviewed drafts of the paper, approved the final draft. Luyu Zhang analyzed the data, contributed reagents/materials/analysis tools, reviewed drafts of the paper, approved the final draft. Zheng Zhang conceived and designed the experiments, authored or reviewed drafts of the paper, approved the final draft.

Abbreviations

BC, breast cancer; DAVID, Database for Annotation, Visualization and Integrated Discovery; DEG, differentially expressed gene; ER, estrogen receptor; GEO, Gene Expression Omnibus; GEPIA, Gene Expression Profiling Interactive Analysis; GO, Gene Ontology; KEGG, Kyoto Encyclopedia of Genes and Genomes; OS, overall survival; PPI, protein–protein interaction; PR, progesterone receptor; qPCR, quantitative PCR; qRT-PCR, quantitative real-time PCR; RPL11, ribosomal protein L11; RPL14, ribosomal protein L14; RPS9, ribosomal protein S9; RPS14, ribosomal protein S14; RPS27, ribosomal protein S27; STRING, Search Tool for the Retrieval of Reciprocity Genes; TNBC, triple-negative breast cancer.

References

- Chen, J., Qian, X., He, Y., Han, X. and Pan, Y. (2019) Novel key genes in triple-negative breast cancer identified by weighted gene co-expression network analysis. *J. Cell. Biochem.* **120**, 16900–16912, <https://doi.org/10.1002/jcb.28948>
- Bao, C., Lu, Y., Chen, J., Chen, D., Lou, W., Ding, B. et al. (2019) Exploring specific prognostic biomarkers in triple-negative breast cancer. *Cell Death Dis.* **10**, 807, <https://doi.org/10.1038/s41419-019-2043-x>
- Stricker, T.P., Brown, C.D., Bandlamudi, C., McNerney, M., Kittler, R., Montoya, V. et al. (2017) Robust stratification of breast cancer subtypes using differential patterns of transcript isoform expression. *PLoS Genet.* **13**, e1006589, <https://doi.org/10.1371/journal.pgen.1006589>
- Li, X., Yang, J., Peng, L., Sahin, A.A., Huo, L., Ward, K.C. et al. (2017) Triple-negative breast cancer has worse overall survival and cause-specific survival than non-triple-negative breast cancer. *Breast Cancer Res. Treat.* **161**, 279–287, <https://doi.org/10.1007/s10549-016-4059-6>
- Xie, C., Xiong, W., Li, J., Wang, X., Xu, C. and Yang, L. (2019) Intersectin 1 (ITSN1) identified by comprehensive bioinformatic analysis and experimental validation as a key candidate biological target in breast cancer. *Onco Targets Ther.* **12**, 7079–7093, <https://doi.org/10.2147/OTT.S216286>
- Tovey, H. and Cheang, M.C.U. (2019) Identifying biomarkers to pair with targeting treatments within triple negative breast cancer for improved patient stratification. *Cancers* **11**, 1864, <https://doi.org/10.3390/cancers11121864>

- 7 Li, Y., Su, P., Wang, Y., Zhang, H., Liang, Y., Zhang, N. et al. (2020) Impact of histotypes on preferential organ-specific metastasis in triple-negative breast cancer. *Cancer Med.* **9**, 872–881, <https://doi.org/10.1002/cam4.2759>
- 8 Liu, F., Wu, Y., Mi, Y., Gu, L., Sang, M. and Geng, C. (2019) Identification of core genes and potential molecular mechanisms in breast cancer using bioinformatics analysis. *Pathol. Res. Pract.* **215**, 152436, <https://doi.org/10.1016/j.prp.2019.152436>
- 9 Ruan, H., Li, S., Tong, J., Cao, Q., Song, Z., Wang, K. et al. (2019) The screening of pivotal gene expression signatures and biomarkers in renal carcinoma. *J. Cancer* **10**, 6384–6394, <https://doi.org/10.7150/jca.30656>
- 10 Dong, P., Yu, B., Pan, L., Tian, X. and Liu, F. (2018) Identification of key genes and pathways in triple-negative breast cancer by integrated bioinformatics analysis. *Biomed Res. Int.* **2018**, 2760918, <https://doi.org/10.1155/2018/2760918>
- 11 Wang, L., Li, S., Wang, Y., Tang, Z., Liu, C., Jiao, W. et al. (2020) Identification of differentially expressed protein-coding genes in lung adenocarcinomas. *Exp. Ther. Med.* **19**, 1103–1111
- 12 Xu, X., Zhu, C., Wang, Q., Zhu, X. and Zhou, Y. (2020) Identifying vital nodes in complex networks by adjacency information entropy. *Sci. Rep.* **10**, 2691, <https://doi.org/10.1038/s41598-020-59616-w>
- 13 Javadi, A.H., Emo, B., Howard, L.R., Zisch, F.E., Yu, Y., Knight, R. et al. (2017) Hippocampal and prefrontal processing of network topology to simulate the future. *Nat. Commun.* **8**, 14652, <https://doi.org/10.1038/ncomms14652>
- 14 Wu, C., Tong, L., Wu, C., Chen, D., Chen, J. and Li, Q. (2020) Two miRNA prognostic signatures of head and neck squamous cell carcinoma: a bioinformatic analysis based on the TCGA dataset. *Cancer Med.* **9**, 2631–2642, <https://doi.org/10.1002/cam4.3643>
- 15 Wu, J., Wang, Y. and Jiang, Z. (2020) TNFSF9 is a prognostic biomarker and correlated with immune infiltrates in pancreatic cancer. *J. Gastrointest. Cancer*, <https://doi.org/10.1007/s12029-020-00371-6>
- 16 Wu, J., Chen, Z.P., Shang, A.Q., Wang, W.W., Chen, Z.N., Tao, Y.J. et al. (2017) Systemic bioinformatics analysis of recurrent aphthous stomatitis gene expression profiles. *Oncotarget* **8**, 111064–72, <https://doi.org/10.18632/oncotarget.22347>
- 17 Rafo, M.D.V. and Aparicio, J.P. (2020) Simple epidemic network model for highly heterogeneous populations. *J. Theor. Biol.* **486**, 110056, <https://doi.org/10.1016/j.jtbi.2019.110056>
- 18 Yoon, S., Goltsev, A.V. and Mendes, J.F.F. (2018) Structural stability of interaction networks against negative external fields. *Phys. Rev. E* **97**, 042311, <https://doi.org/10.1103/PhysRevE.97.042311>
- 19 Chen, B., Tang, H., Chen, X., Zhang, G., Wang, Y., Xie, X. et al. (2019) Transcriptomic analyses identify key differentially expressed genes and clinical outcomes between triple-negative and non-triple-negative breast cancer. *Cancer Manag. Res.* **11**, 179–190, <https://doi.org/10.2147/CMAR.S187151>
- 20 Xu, W.H., Wu, J., Wang, J., Wan, F.N., Wang, H.K., Cao, D.L. et al. (2019) Screening and identification of potential prognostic biomarkers in adrenocortical carcinoma. *Front. Genet.* **10**, 821, <https://doi.org/10.3389/fgene.2019.00821>
- 21 Genuth, N.R. and Barna, M. (2018) The discovery of ribosome heterogeneity and its implications for gene regulation and organismal life. *Mol. Cell* **71**, 364–374, <https://doi.org/10.1016/j.molcel.2018.07.018>
- 22 Penzo, M., Montanaro, L., Trerè, D. and Derenzini, M. (2019) The ribosome biogenesis-cancer connection. *Cells* **8**, <https://doi.org/10.3390/cells8010055>
- 23 Catez, F., Dalla Venezia, N., Marcel, V., Zorbas, C., Lafontaine, D.L.J. and Diaz, J.J. (2019) Ribosome biogenesis: an emerging druggable pathway for cancer therapeutics. *Biochem. Pharmacol.* **159**, 74–81, <https://doi.org/10.1016/j.bcp.2018.11.014>
- 24 Pelletier, J., Thomas, G. and Volarević, S. (2018) Ribosome biogenesis in cancer: new players and therapeutic avenues. *Nat. Rev. Cancer* **18**, 51–63, <https://doi.org/10.1038/nrc.2017.104>
- 25 Shi, Z., Fujii, K., Kovary, K.M., Genuth, N.R., Röst, H.L., Teruel, M.N. et al. (2017) Heterogeneous ribosomes preferentially translate distinct subpools of mRNAs genome-wide. *Mol. Cell* **67**, 71.e7–83.e7, <https://doi.org/10.1016/j.molcel.2017.05.021>
- 26 Myasnikov, A.G., Kundhavi Natchiar, S., Nebout, M., Hazemann, I., Imbert, V., Khatter, H. et al. (2016) Structure-function insights reveal the human ribosome as a cancer target for antibiotics. *Nat. Commun.* **7**, 12856, <https://doi.org/10.1038/ncomms12856>
- 27 Long, T., Liu, Z., Zhou, X., Yu, S., Tian, H. and Bao, Y. (2019) Identification of differentially expressed genes and enriched pathways in lung cancer using bioinformatics analysis. *Mol. Med. Rep.* **19**, 2029–2040
- 28 Bao, C., Lu, Y., Chen, J., Chen, D., Lou, W., Ding, B. et al. (2019) Exploring specific prognostic biomarkers in triple-negative breast cancer. *Cell Death Dis.* **10**, 807, <https://doi.org/10.1038/s41419-019-2043-x>
- 29 Qiu, J., Sun, M., Wang, Y. and Chen, B. (2020) Identification of hub genes and pathways in gastric adenocarcinoma based on bioinformatics analysis. *Med. Sci. Monit.* **26**, e920261, <https://doi.org/10.12659/MSM.920261>
- 30 Wang, W., Nag, S., Zhang, X., Wang, M.H., Wang, H., Zhou, J. et al. (2015) Ribosomal proteins and human diseases: pathogenesis, molecular mechanisms, and therapeutic implications. *Med. Res. Rev.* **35**, 225–285, <https://doi.org/10.1002/med.21327>
- 31 Song, K.P., Shu, P., Ma, J.L., Wang, B. and Chen, B. (2019) Ribosomal protein S9 expression in multiple myeloma and its effect on cell biological function. *Zhongguo Yi Xue Ke Xue Yuan Xue Bao* **41**, 175–182
- 32 Cheng, D.D., Zhu, B., Li, S.J., Yuan, T., Yang, Q.C. and Fan, C.Y. (2017) Down-regulation of RPS9 inhibits osteosarcoma cell growth through inactivation of MAPK signaling pathway. *J. Cancer* **8**, 2720–2728, <https://doi.org/10.7150/jca.19130>
- 33 Jia, Z., Ai, X., Sun, F., Zang, T., Guan, Y. and Gao, F. (2015) Identification of new hub genes associated with bladder carcinoma via bioinformatics analysis. *Tumori* **101**, 117–122, <https://doi.org/10.5301/tj.5000196>
- 34 Lessard, F., Igelmann, S., Trahan, C., Huot, G., Saint-Germain, E., Mignacca, L. et al. (2018) Senescence-associated ribosome biogenesis defects contributes to cell cycle arrest through the Rb pathway. *Nat. Cell Biol.* **20**, 789–799, <https://doi.org/10.1038/s41556-018-0127-y>
- 35 Floristán, A., Morales, L., Hanniford, D., Martínez, C., Castellano-Sanz, E., Dolgalev, I. et al. (2019) Functional analysis of RPS27 mutations and expression in melanoma. *Pigment Cell Melanoma Res.* **33**, 466–479, <https://doi.org/10.1111/pcmr.12841>
- 36 Liu, F., Xing, L., Zhang, X. and Zhang, X. (2019) A four-pseudogene classifier identified by machine learning serves as a novel prognostic marker for survival of osteosarcoma. *Genes* **10**, 414, <https://doi.org/10.3390/genes10060414>

- 37 Jung, J.H., Lee, H., Kim, J.H., Sim, D.Y., Ahn, H., Kim, B. et al. (2019) p53-dependent apoptotic effect of puromycin via binding of ribosomal protein L5 and L11 to MDM2 and its combination effect with RITA or doxorubicin. *Cancers* **11**, <https://doi.org/10.3390/cancers11040582>
- 38 Alshabi, A.M., Vastrad, B., Shaikh, I.A. and Vastrad, C. (2019) Identification of crucial candidate genes and pathways in glioblastoma multiform by bioinformatics analysis. *Biomolecules*. **9**, <https://doi.org/10.3390/biom9050201>
- 39 Feng, Y., Ma, J., Fan, H., Liu, M., Zhu, Y., Li, Y. et al. (2019) TNF- α -induced lncRNA LOC105374902 promotes the malignant behavior of cervical cancer cells by acting as a sponge of miR-1285-3p. *Biochem. Biophys. Res. Commun.* **513**, 56–63
- 40 Fang, E. and Zhang, X. (2017) Identification of breast cancer hub genes and analysis of prognostic values using integrated bioinformatics analysis. *Cancer Biomarkers* **21**, 373–381, <https://doi.org/10.3233/CBM-170550>

